

Attribution: Department of Neurology, 2009

License: Unless otherwise noted, this material is made available under the terms of the **Creative Commons Attribution–Non-commercial–Share Alike 3.0 License:**
<http://creativecommons.org/licenses/by-nc-sa/3.0/>

We have reviewed this material in accordance with U.S. Copyright Law **and have tried to maximize your ability to use, share, and adapt it.** The citation key on the following slide provides information about how you may share and adapt this material.

Copyright holders of content included in this material should contact open.michigan@umich.edu with any questions, corrections, or clarification regarding the use of content.

For more information about **how to cite** these materials visit <http://open.umich.edu/education/about/terms-of-use>.

Any **medical information** in this material is intended to inform and educate and is **not a tool for self-diagnosis** or a replacement for medical evaluation, advice, diagnosis or treatment by a healthcare professional. Please speak to your physician if you have questions about your medical condition.

Viewer discretion is advised: Some medical content is graphic and may not be suitable for all viewers.

Citation Key

for more information see: <http://open.umich.edu/wiki/CitationPolicy>

Use + Share + Adapt

{ Content the copyright holder, author, or law permits you to use, share and adapt. }



Public Domain – Government: Works that are produced by the U.S. Government. (USC 17 § 105)



Public Domain – Expired: Works that are no longer protected due to an expired copyright term.



Public Domain – Self Dedicated: Works that a copyright holder has dedicated to the public domain.



Creative Commons – Zero Waiver



Creative Commons – Attribution License



Creative Commons – Attribution Share Alike License



Creative Commons – Attribution Noncommercial License



Creative Commons – Attribution Noncommercial Share Alike License



GNU – Free Documentation License

Make Your Own Assessment

{ Content Open.Michigan believes can be used, shared, and adapted because it is ineligible for copyright. }



Public Domain – Ineligible: Works that are ineligible for copyright protection in the U.S. (USC 17 § 102(b)) *laws in your jurisdiction may differ

{ Content Open.Michigan has used under a Fair Use determination. }



Fair Use: Use of works that is determined to be Fair consistent with the U.S. Copyright Act. (USC 17 § 107) *laws in your jurisdiction may differ

Our determination **DOES NOT** mean that all uses of this 3rd-party content are Fair Uses and we **DO NOT** guarantee that your use of the content is Fair.

To use this content you should **do your own independent analysis** to determine whether or not your use will be Fair.

Hypothalamus/Pituitary Development

M1 CNS Head and Neck
Winter 2009

Hypothalamus Pituitary Development

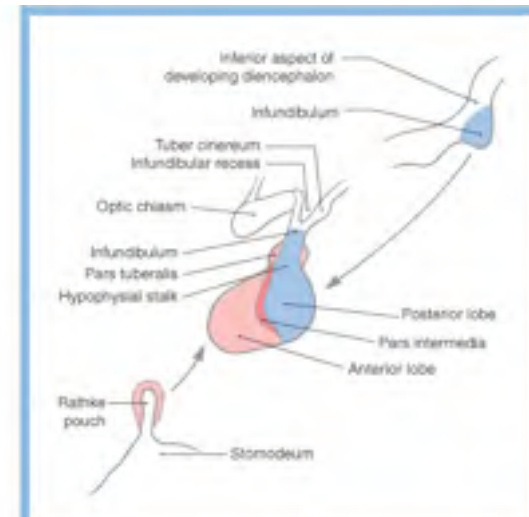
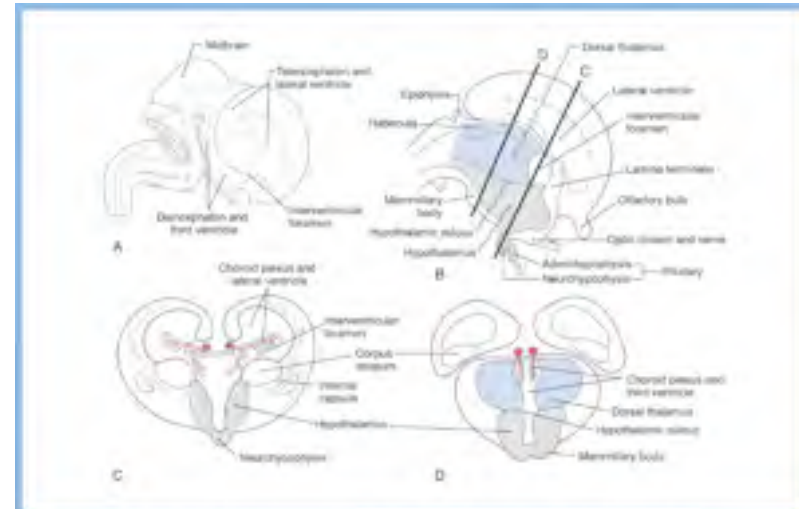
Hypothalamus

Part of Prosencephalon
Continuous with alar plate

Pituitary

Posterior Lobe (Pars nervosa) Arises from the floor of the developing diencephalon.

Anterior Lobe (Adenohypophysis) Arises from the roof of the developing oral cavity = Rathke's pouch



Additional Source Information

for more information see: <http://open.umich.edu/wiki/CitationPolicy>

Slide 5: Haines, *Fundamental Neuroscience for Basic and Clinical Applications*, Elsevier