

Author(s): MELO 3D Project Team, 2011

License: This work is licensed under the Creative Commons Attribution-ShareAlike 3.0 Unported License. To view a copy of this license, visit <http://creativecommons.org/licenses/by-sa/3.0/>.

We have reviewed this material in accordance with U.S. Copyright Law **and have tried to maximize your ability to use, share, and adapt it.** The citation key on the following slide provides information about how you may share and adapt this material.

Copyright holders of content included in this material should contact open.michigan@umich.edu with any questions, corrections, or clarification regarding the use of content.

For more information about **how to cite** these materials visit <http://open.umich.edu/privacy-and-terms-use>.

Any **medical information** in this material is intended to inform and educate and is **not a tool for self-diagnosis** or a replacement for medical evaluation, advice, diagnosis or treatment by a healthcare professional. Please speak to your physician if you have questions about your medical condition.

Viewer discretion is advised: Some medical content is graphic and may not be suitable for all viewers.

Attribution Key

for more information see: <http://open.umich.edu/wiki/AttributionPolicy>

Use + Share + Adapt

{ Content the copyright holder, author, or law permits you to use, share and adapt. }



Public Domain – Government: Works that are produced by the U.S. Government. (17 USC § 105)



Public Domain – Expired: Works that are no longer protected due to an expired copyright term.



Public Domain – Self Dedicated: Works that a copyright holder has dedicated to the public domain.



Creative Commons – Zero Waiver



Creative Commons – Attribution License



Creative Commons – Attribution Share Alike License



Creative Commons – Attribution Noncommercial License



Creative Commons – Attribution Noncommercial Share Alike License



GNU – Free Documentation License

Make Your Own Assessment

{ Content Open.Michigan believes can be used, shared, and adapted because it is ineligible for copyright. }



Public Domain – Ineligible: Works that are ineligible for copyright protection in the U.S. (17 USC § 102(b)) *laws in your jurisdiction may differ

{ Content Open.Michigan has used under a Fair Use determination. }



Fair Use: Use of works that is determined to be Fair consistent with the U.S. Copyright Act. (17 USC § 107) *laws in your jurisdiction may differ

Our determination **DOES NOT** mean that all uses of this 3rd-party content are Fair Uses and we **DO NOT** guarantee that your use of the content is Fair.

To use this content you should **do your own independent analysis** to determine whether or not your use will be Fair.

The logo for the Department of Romance Languages and Literatures is a white circle containing the text "department of romance languages and literatures" in a blue sans-serif font. The word "romance" is in a larger, bold font. The circle is surrounded by a decorative border of red dots of varying sizes, arranged in a semi-circle.

department of
romance
languages and
literatures

A teal-colored banner with a wavy top and bottom edge. The text "What's Happening" is written in a red, cursive font. The word "What's" is in a smaller, sans-serif font above "Happening".

What's
Happening

Romance Languages & Literatures

General Teaching Philosophy

Communicative Approach



Focuses on language as a medium of communication.

Recognizes that all communication has a social purpose. Learner has something to say or find out.

Classroom activities maximize opportunities for learners to **use target language in a communicative way for meaningful activities.**

-Accent is on functional/ usable language

- Authentic resources

- Classroom should provide opportunities for rehearsal of real-life situations and provide opportunity for real communication.




-Errors are a natural part of learning language

-Personalize and localize language and adapt it to interests of students

-Spontaneous and improvised practice

<http://www.lenguajero.com>

Welcome, MRobles available 

[Español](#) | [Help](#) | [Inbox](#) | [Sign Out](#)



[Home](#)

[Write](#)

[Listen](#)

[Learn](#)

[Community](#)

[Profile](#)

Lenguajero Guides

Spanish in Mexico

A Beyond the Basics guide to the slang, history of Spanish, books, movies, music, and food in Mexico.



2011 Edition

August E. Flanagan
© 2011 Lenguajero.com

[Spanish in Mexico E-book](#)

Spanish in Spain

A Basics and Beyond guide to the slang, history of Spanish, books, movies, music, and food in Spain.

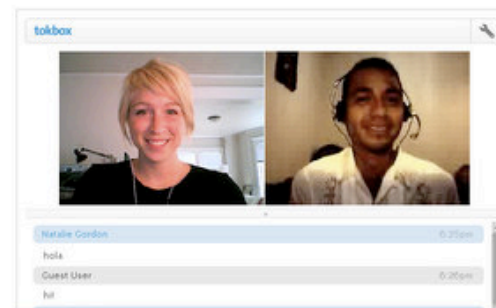


Have a Conversation

1. Let people know what you want to talk about.

Press Enter

2. [Find a Conversation Partner](#)
3. Available members will have a 'Talk Now' button on their profile. Click this button to send a chat request.



Writing Club

Recent Topics

[The Internet](#) (101)

[Chocolate](#) (113)

[Flying](#) (79)

[Diet & Exercise](#) (138)

[Gender Differences](#) (50)

Flashcards

Our flashcard program is really smart. It knows what you need to study, and when you need to study it, to make sure that you memorize and retain new words and phrases. [Try it out.](#)

Learn Spanish



Content Quality



strengths

Keeping in mind our theoretical framework, “lenguajero” allows students to get in touch with native Spanish speakers. Beside all the possibilities that this site gives students for learning on their own, a teacher can assign activities to share in class (for example: interview a native about any specific topic). Furthermore, the spontaneous chat can be directed by interests such as food, sports, travels, etc. These topics help building student’s vocabulary.

Concerns

Number of people available to chat at a given time.

Potential effectiveness as a teaching tool



STRENGTHS

- Allows practicing all 4 communicative skills (Listening, speaking, reading, writing) with special focus on Conversational skills
- Provides a real communicative situation. Meaningful exchange.

CONCERNS

- The student needs to have a basic command of the language. If not Lenguajero won't be effective.
- In order to improve effectiveness it could be “wrapped” (establishing certain objectives) to provide more guidance for less advanced students.

The learning objective is not previously determined.



Ease of Use

STRENGTHS

- Easy to navigate. Resembles other social networks and communication software the student is probably familiar with.
- Provides a safe learning environment.
- A dictionary is included next to the chat to help students use and learn new words.

CONCERNS

- Requires certain computer skills.
- Registration online may be frustrating.
- A certain amount of computer hardware is needed (webcam, microphone, etc.).