

Author(s): Gerald Abrams, M.D., 2009

License: Unless otherwise noted, this material is made available under the terms of the **Creative Commons Attribution–Non-commercial–Share Alike 3.0**

License: <http://creativecommons.org/licenses/by-nc-sa/3.0/>

We have reviewed this material in accordance with U.S. Copyright Law **and have tried to maximize your ability to use, share, and adapt it.** The citation key on the following slide provides information about how you may share and adapt this material.

Copyright holders of content included in this material should contact open.michigan@umich.edu with any questions, corrections, or clarification regarding the use of content.

For more information about **how to cite** these materials visit <http://open.umich.edu/education/about/terms-of-use>.

Any **medical information** in this material is intended to inform and educate and is **not a tool for self-diagnosis** or a replacement for medical evaluation, advice, diagnosis or treatment by a healthcare professional. Please speak to your physician if you have questions about your medical condition.

Viewer discretion is advised: Some medical content is graphic and may not be suitable for all viewers.

Citation Key

for more information see: <http://open.umich.edu/wiki/CitationPolicy>

Use + Share + Adapt

{ Content the copyright holder, author, or law permits you to use, share and adapt. }



Public Domain – Government: Works that are produced by the U.S. Government. (USC 17 §105)



Public Domain – Expired: Works that are no longer protected due to an expired copyright term.



Public Domain – Self Dedicated: Works that a copyright holder has dedicated to the public domain.



Creative Commons – Zero Waiver



Creative Commons – Attribution License



Creative Commons – Attribution Share Alike License



Creative Commons – Attribution Noncommercial License



Creative Commons – Attribution Noncommercial Share Alike License



GNU – Free Documentation License

Make Your Own Assessment

{ Content Open.Michigan believes can be used, shared, and adapted because it is ineligible for copyright. }



Public Domain – Ineligible: Works that are ineligible for copyright protection in the U.S. (USC 17 § 102(b)) *laws in your jurisdiction may differ

{ Content Open.Michigan has used under a Fair Use determination. }



Fair Use: Use of works that is determined to be Fair consistent with the U.S. Copyright Act. (USC 17 § 107) *laws in your jurisdiction may differ

Our determination **DOES NOT** mean that all uses of this 3rd-party content are Fair Uses and we **DO NOT** guarantee that your use of the content is Fair.

To use this content you should **do your own independent analysis** to determine whether or not your use will be Fair.

M1 Patients and Populations: MDC: Colon Cancer

Gerald D. Abrams MD

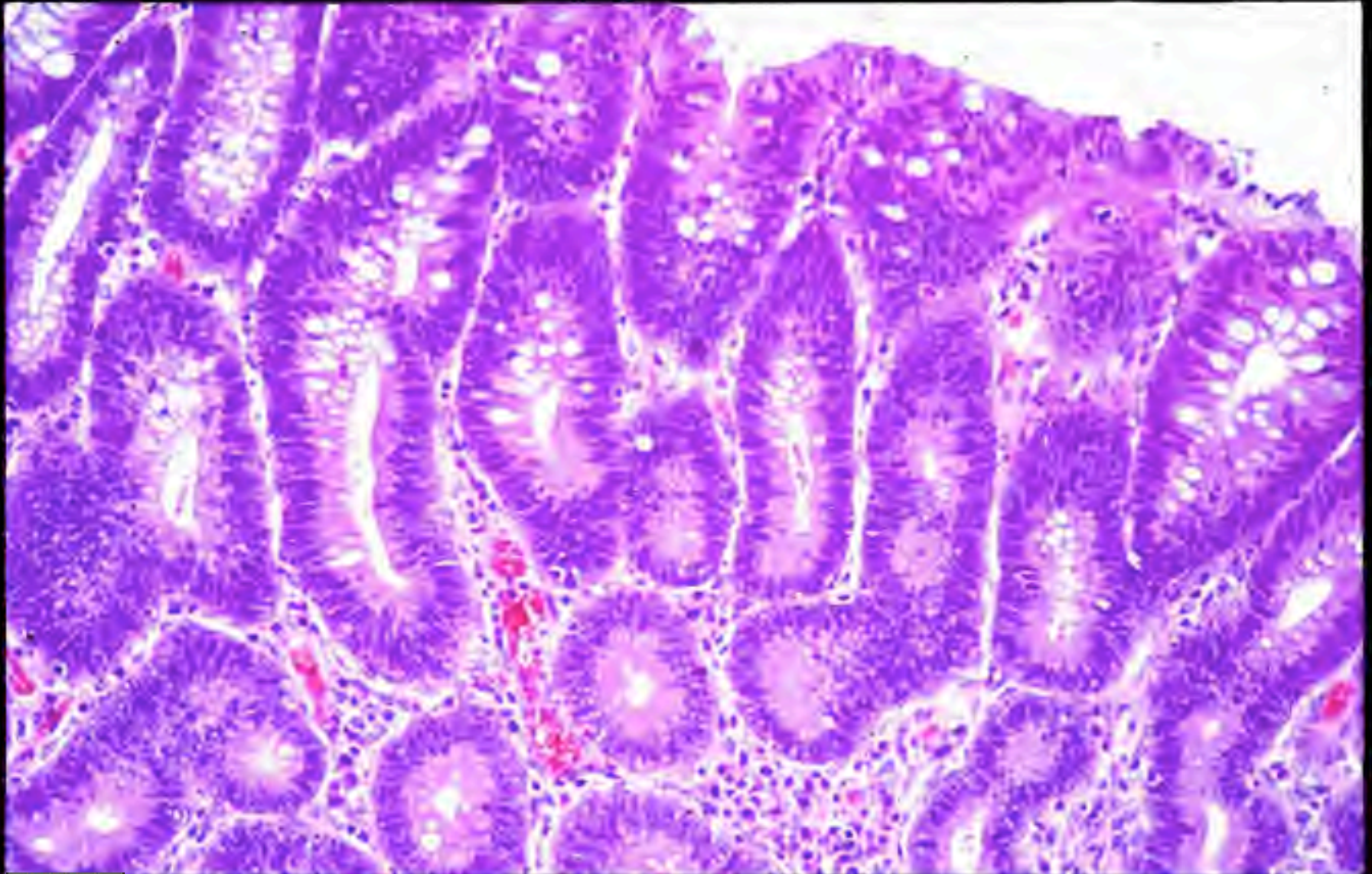
Fall 2008



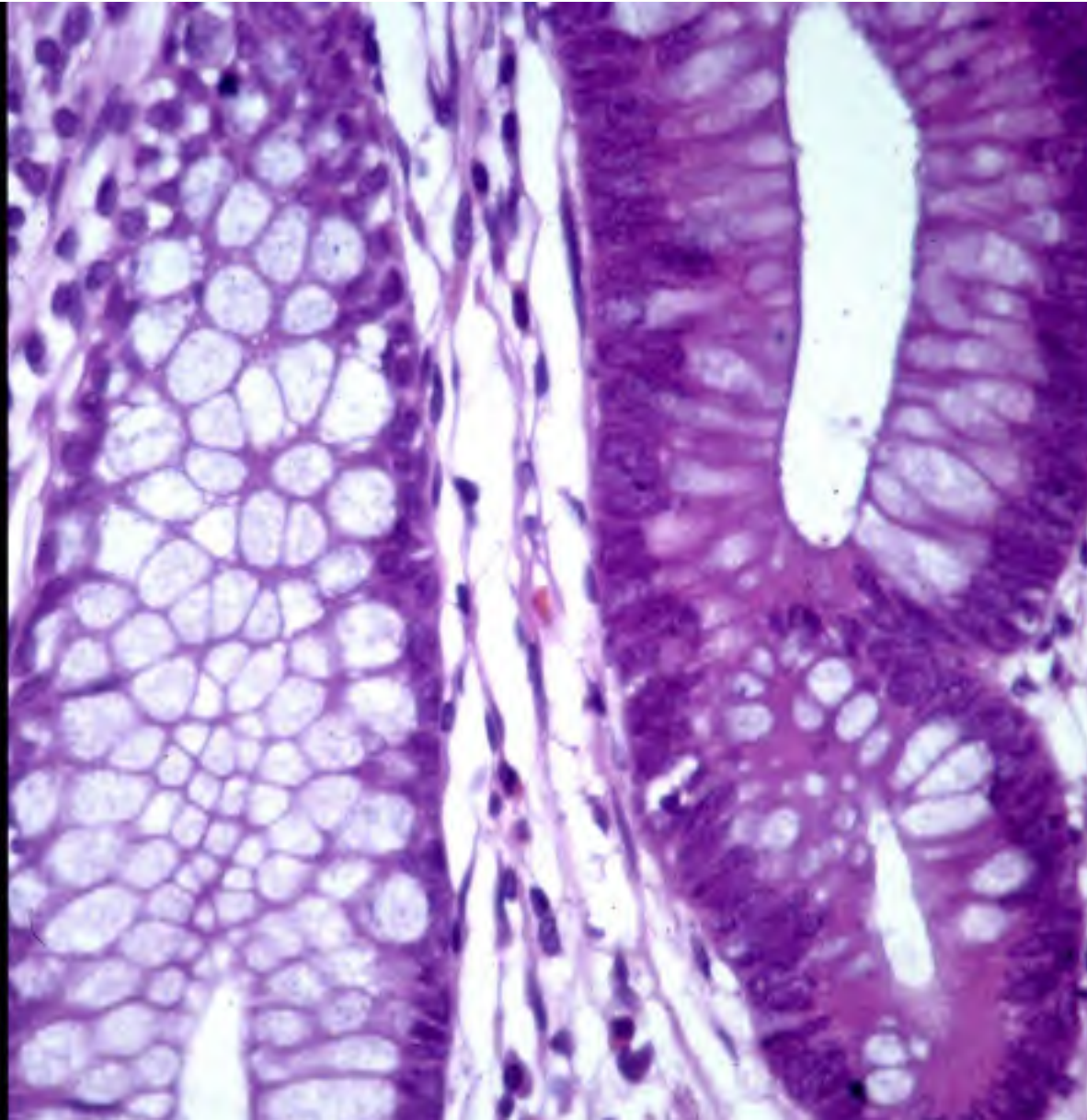
NORMAL MUCOSA



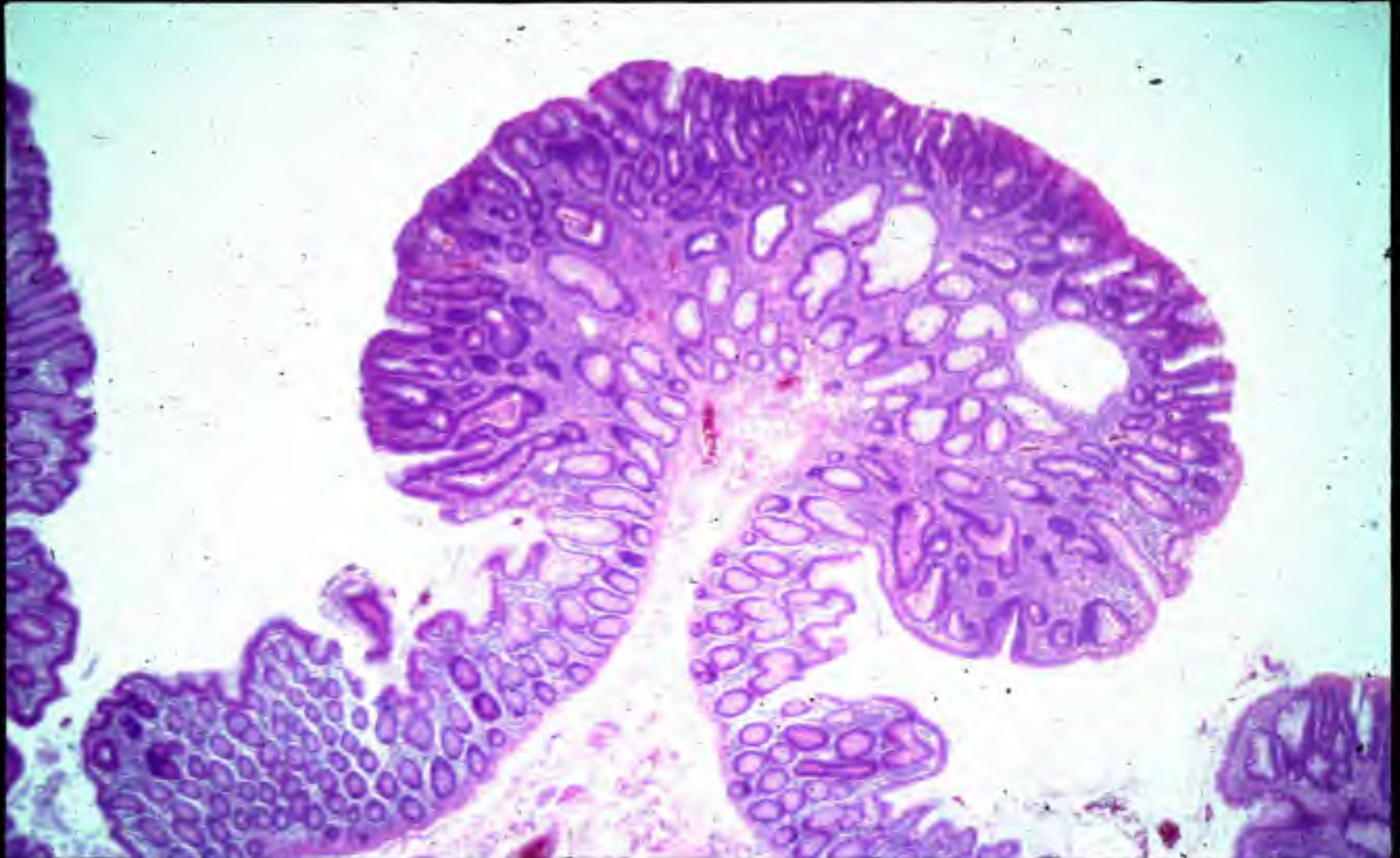
DYSPLASTIC MUCOSA



NORMAL VS DYSPLASTIC



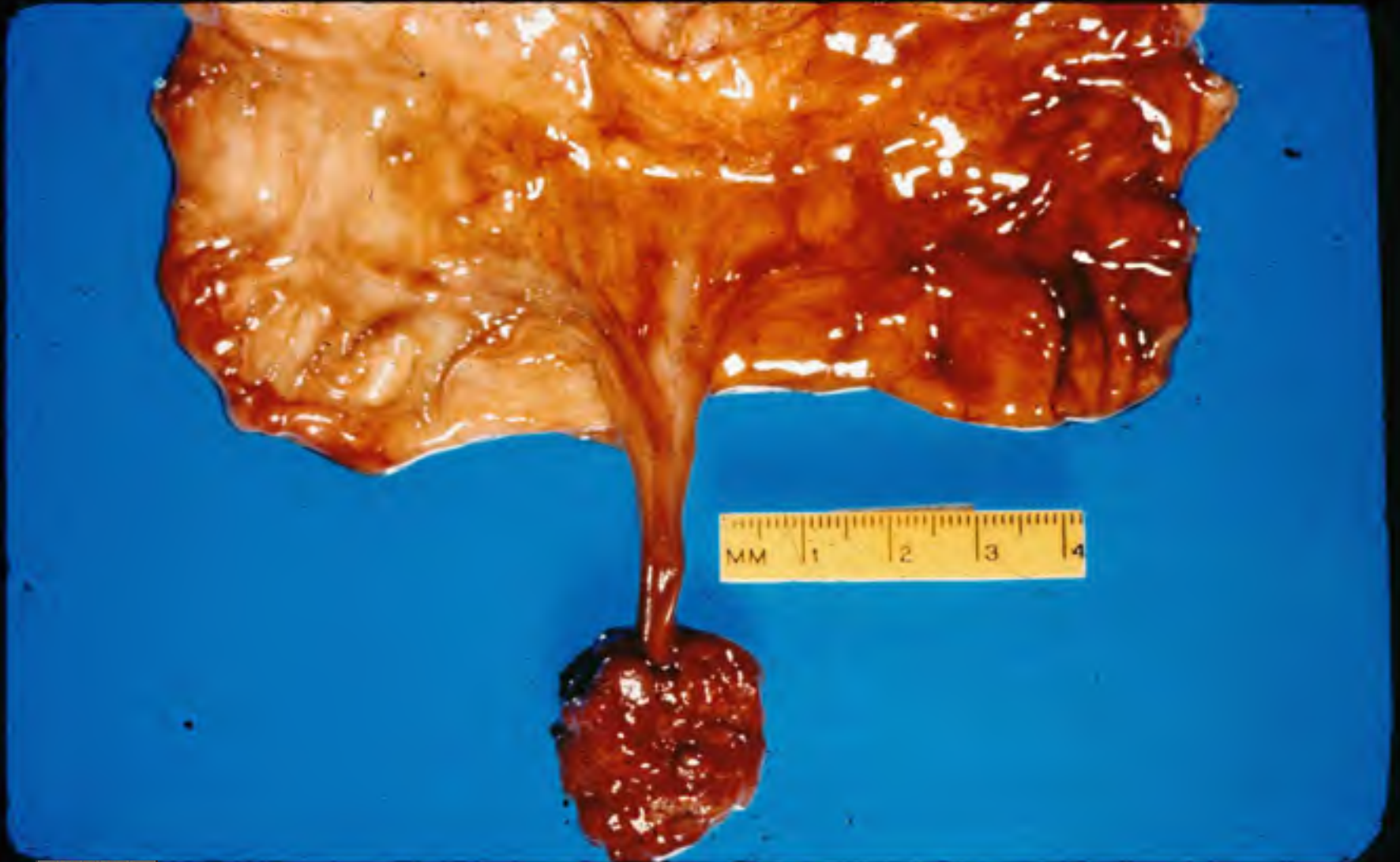
ADENOMATOUS POLYP



ADENOMATOUS POLYPS



PEDUNCULATED ADENOMATOUS POLYP



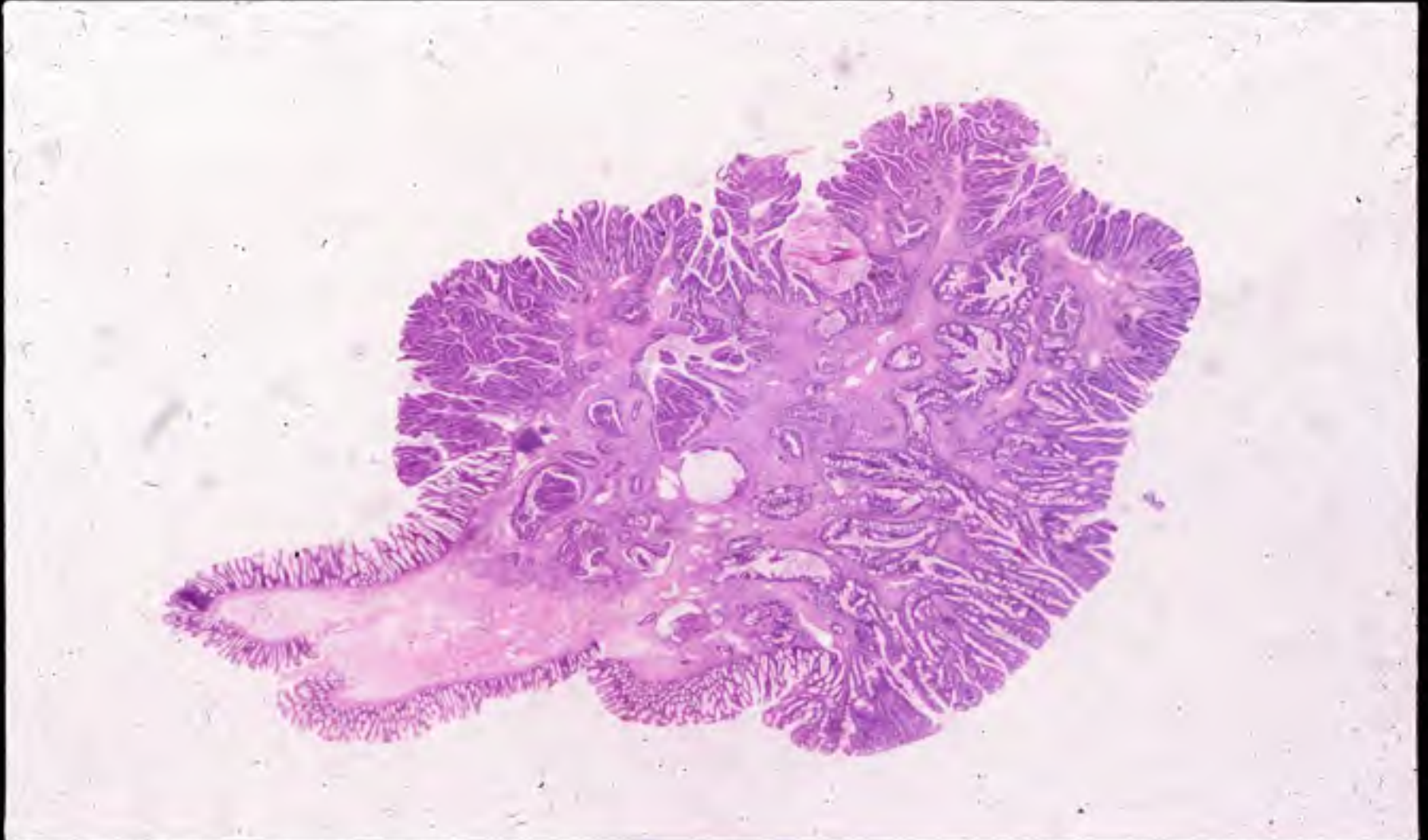
CARCINOMA AND ADENOMAS



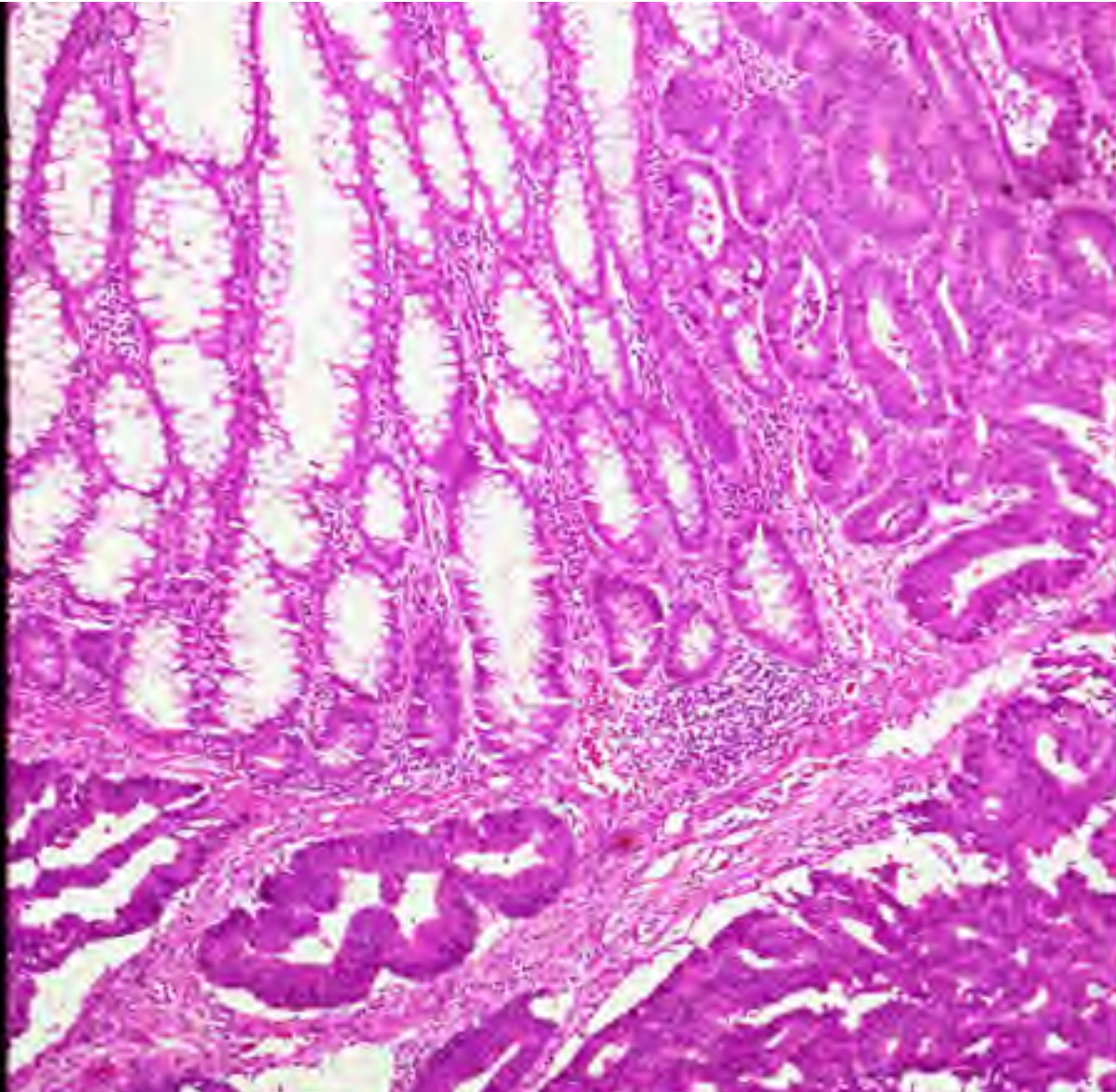
CARCINOMA AND ADENOMAS



CARCINOMA ARISING IN ADENOMA

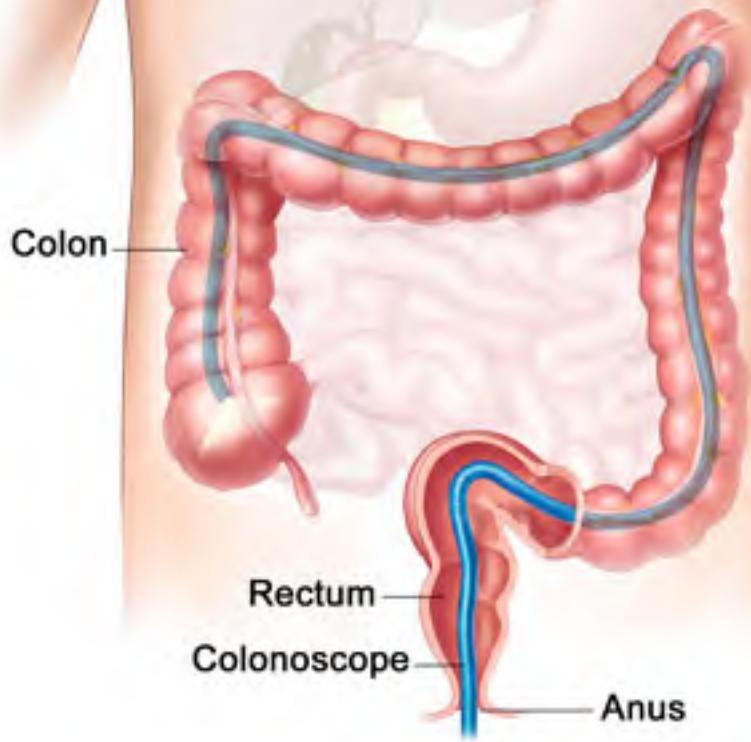
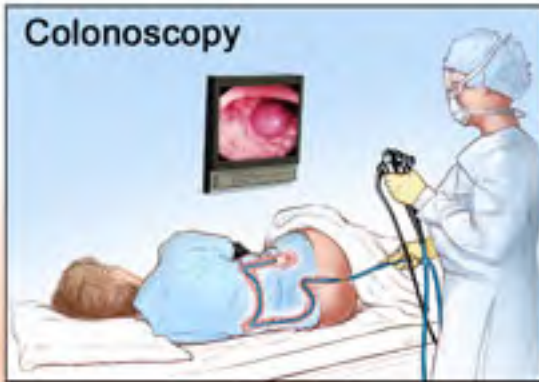


CARCINOMA ARISING IN ADENOMA



COLONOSCOPE







Colon Polyp on Stalk



Snare Around Stalk



"Stump" After Removal

F.A.P.



F.A.P.



Additional Source Information

for more information see: <http://open.umich.edu/wiki/CitationPolicy>

Slide 4: G.D. Abrams, University of Michigan Medical School

Slide 5: Source Undetermined

Slide 6: Source Undetermined

Slide 7: G.D. Abrams, University of Michigan Medical School

Slide 8: Department of Pathology, University of Michigan

Slide 9: Department of Pathology, University of Michigan

Slide 10: Department of Pathology, University of Michigan

Slide 11: Department of Pathology, University of Michigan

Slide 12: G.D. Abrams, University of Michigan Medical School

Slide 13: Source Undetermined

Slide 14: Benutzer Kalumet, Wikimedia Commons,

http://upload.wikimedia.org/wikipedia/commons/9/90/Flexibles_Endoskop.jpg, CC:BY-SA 3.0,

<http://creativecommons.org/licenses/by-sa/3.0/>

Slide 15: National Cancer Institute, Wikimedia Commons, <http://commons.wikimedia.org/wiki/File:Colonoscopia.jpg>

Slide 16: Source Undetermined

Slide 17: Source Undetermined

Slide 18: Source Undetermined

Slide 19: Department of Pathology, University of Michigan

Slide 20: Department of Pathology, University of Michigan