

**Author(s):** Gerald Abrams, M.D., 2009

**License:** Unless otherwise noted, this material is made available under the terms of the **Creative Commons Attribution–Non-commercial–Share Alike 3.0**

**License:** <http://creativecommons.org/licenses/by-nc-sa/3.0/>

**We have reviewed this material** in accordance with U.S. Copyright Law **and have tried to maximize your ability to use, share, and adapt it.** The citation key on the following slide provides information about how you may share and adapt this material.

Copyright holders of content included in this material should contact [open.michigan@umich.edu](mailto:open.michigan@umich.edu) with any questions, corrections, or clarification regarding the use of content.

For more information about **how to cite** these materials visit <http://open.umich.edu/education/about/terms-of-use>.

Any **medical information** in this material is intended to inform and educate and is **not a tool for self-diagnosis** or a replacement for medical evaluation, advice, diagnosis or treatment by a healthcare professional. Please speak to your physician if you have questions about your medical condition.

**Viewer discretion is advised:** Some medical content is graphic and may not be suitable for all viewers.

# Citation Key

for more information see: <http://open.umich.edu/wiki/CitationPolicy>

## Use + Share + Adapt

{ Content the copyright holder, author, or law permits you to use, share and adapt. }



**Public Domain – Government:** Works that are produced by the U.S. Government. (USC 17 §105)



**Public Domain – Expired:** Works that are no longer protected due to an expired copyright term.



**Public Domain – Self Dedicated:** Works that a copyright holder has dedicated to the public domain.



**Creative Commons – Zero Waiver**



**Creative Commons – Attribution License**



**Creative Commons – Attribution Share Alike License**



**Creative Commons – Attribution Noncommercial License**



**Creative Commons – Attribution Noncommercial Share Alike License**



**GNU – Free Documentation License**

## Make Your Own Assessment

{ Content Open.Michigan believes can be used, shared, and adapted because it is ineligible for copyright. }



**Public Domain – Ineligible:** Works that are ineligible for copyright protection in the U.S. (USC 17 § 102(b)) \*laws in your jurisdiction may differ

{ Content Open.Michigan has used under a Fair Use determination. }



**Fair Use:** Use of works that is determined to be Fair consistent with the U.S. Copyright Act. (USC 17 § 107) \*laws in your jurisdiction may differ

Our determination **DOES NOT** mean that all uses of this 3rd-party content are Fair Uses and we **DO NOT** guarantee that your use of the content is Fair.

To use this content you should **do your own independent analysis** to determine whether or not your use will be Fair.

# M1 Patients and Populations: NEOPLASIA III

Gerald D. Abrams MD

Fall 2008



# CLINICAL CONSEQUENCES OF NEOPLASMS

## BENIGN

LOCAL MECHANICAL EFFECTS

LOCAL COMPLICATIONS

SYSTEMIC ENDOCRINE EFFECTS

## MALIGNANT

ALL OF THE ABOVE

CANCER CACHEXIA

PARANEOPLASTIC SYNDROMES

# NOMENCLATURE OF NEOPLASMS

- BASED ON

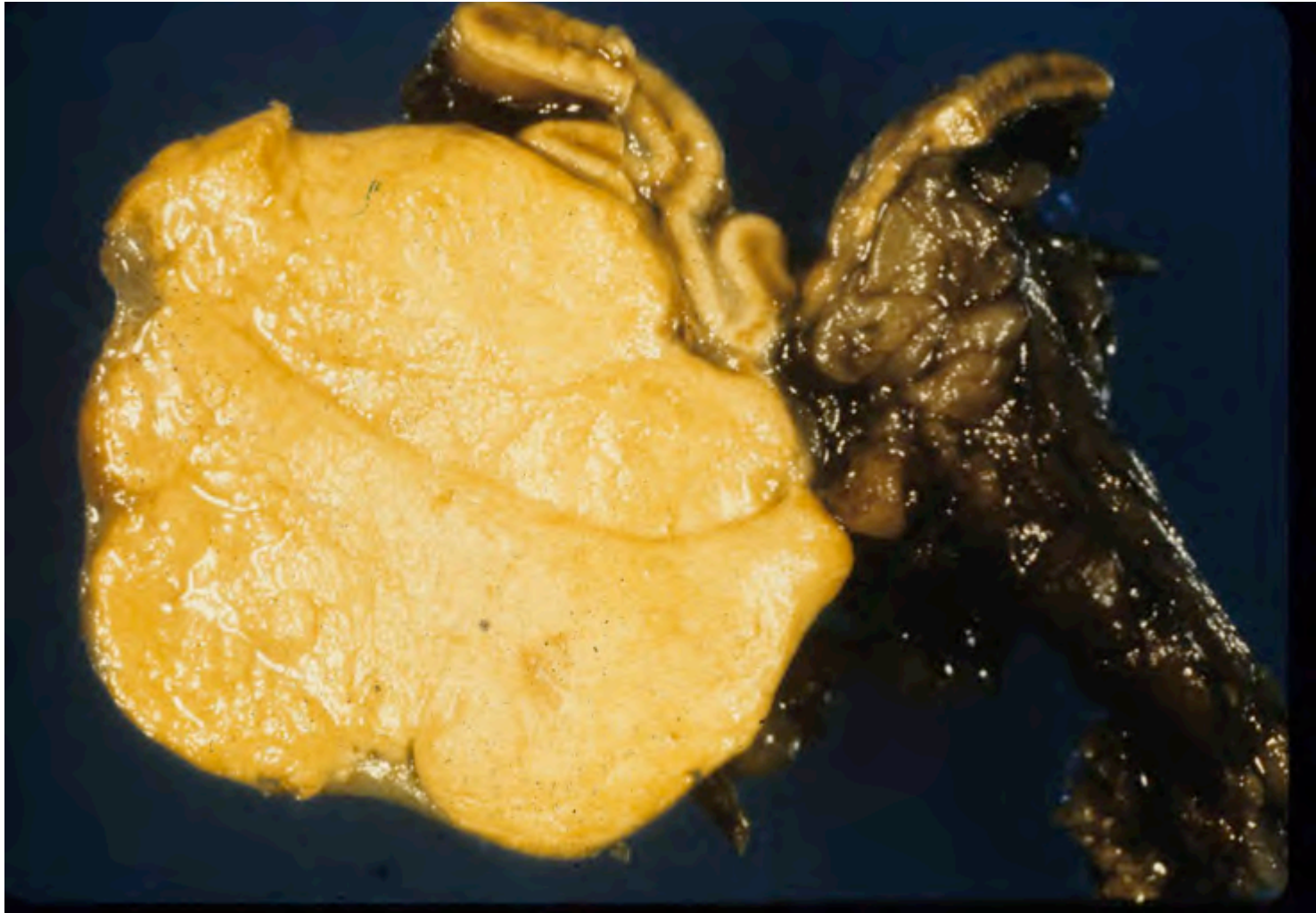
TISSUE OF ORIGIN

BENIGN OR MALIGNANT

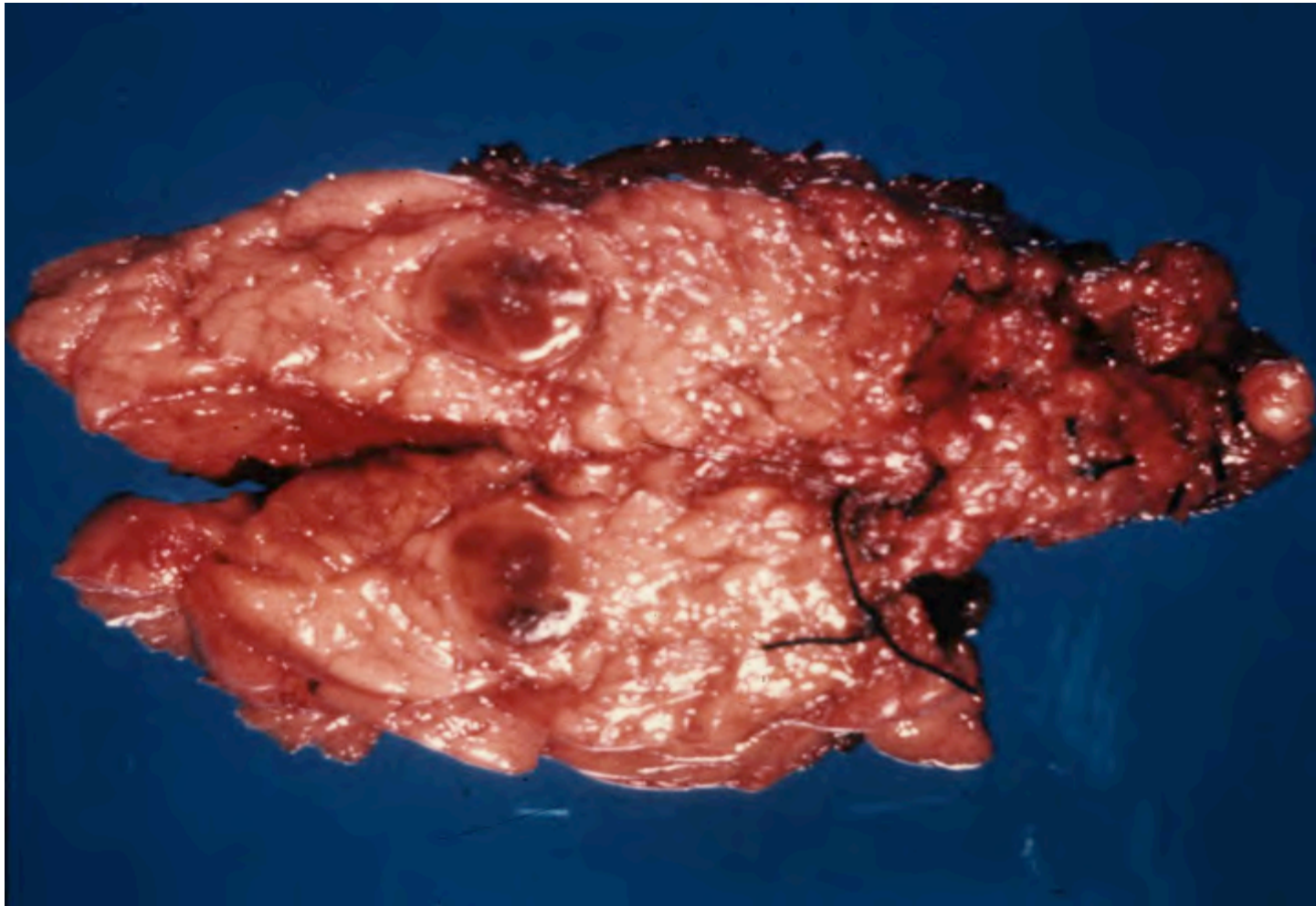
# EPITHELIAL NEOPLASMS

- ADENOMA.....ADENOCARCINOMA
- PAPILOMA...PAPILLARY CARCINOMA
- CYSTADENOMA.....  
CYSTADENOCARCINOMA

# ADRENAL CORTICAL ADENOMA

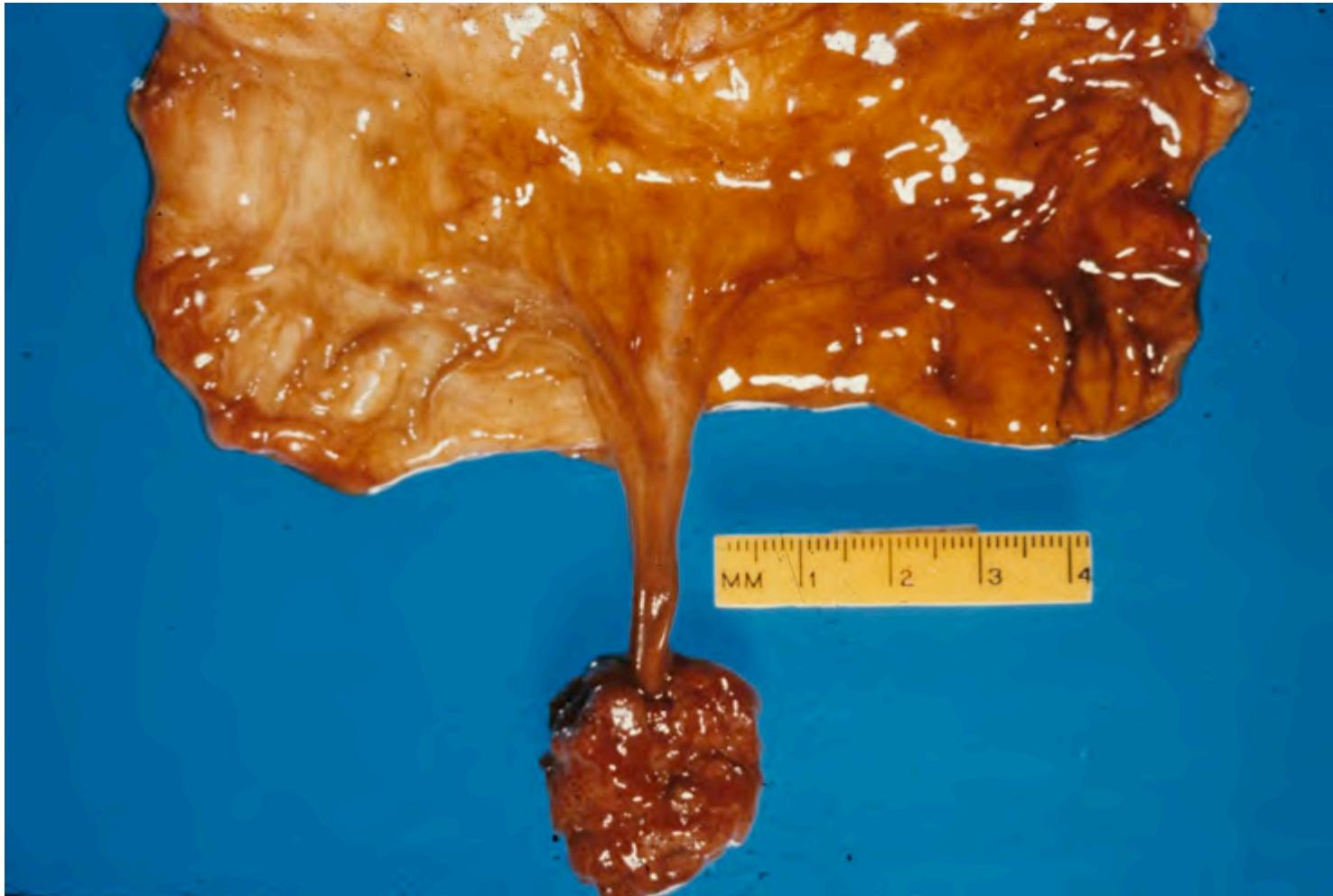


# PANCREAS, ISLET CELL ADENOMA





# COLON, ADENOMA

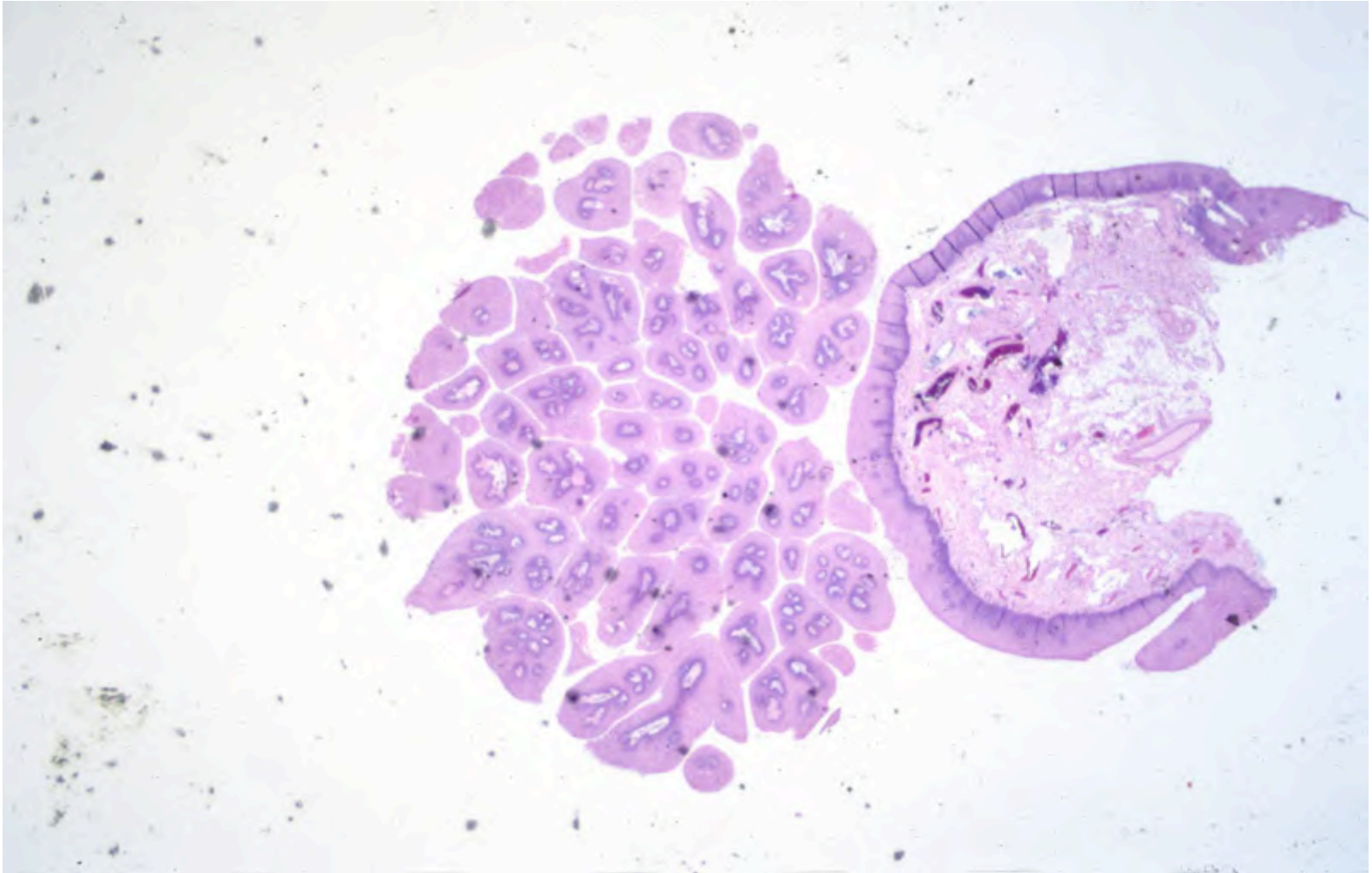


# COLON, ADENOMA



Image of sketch  
of papilloma  
removed

# OROPHARYNX, PAPILLOMA



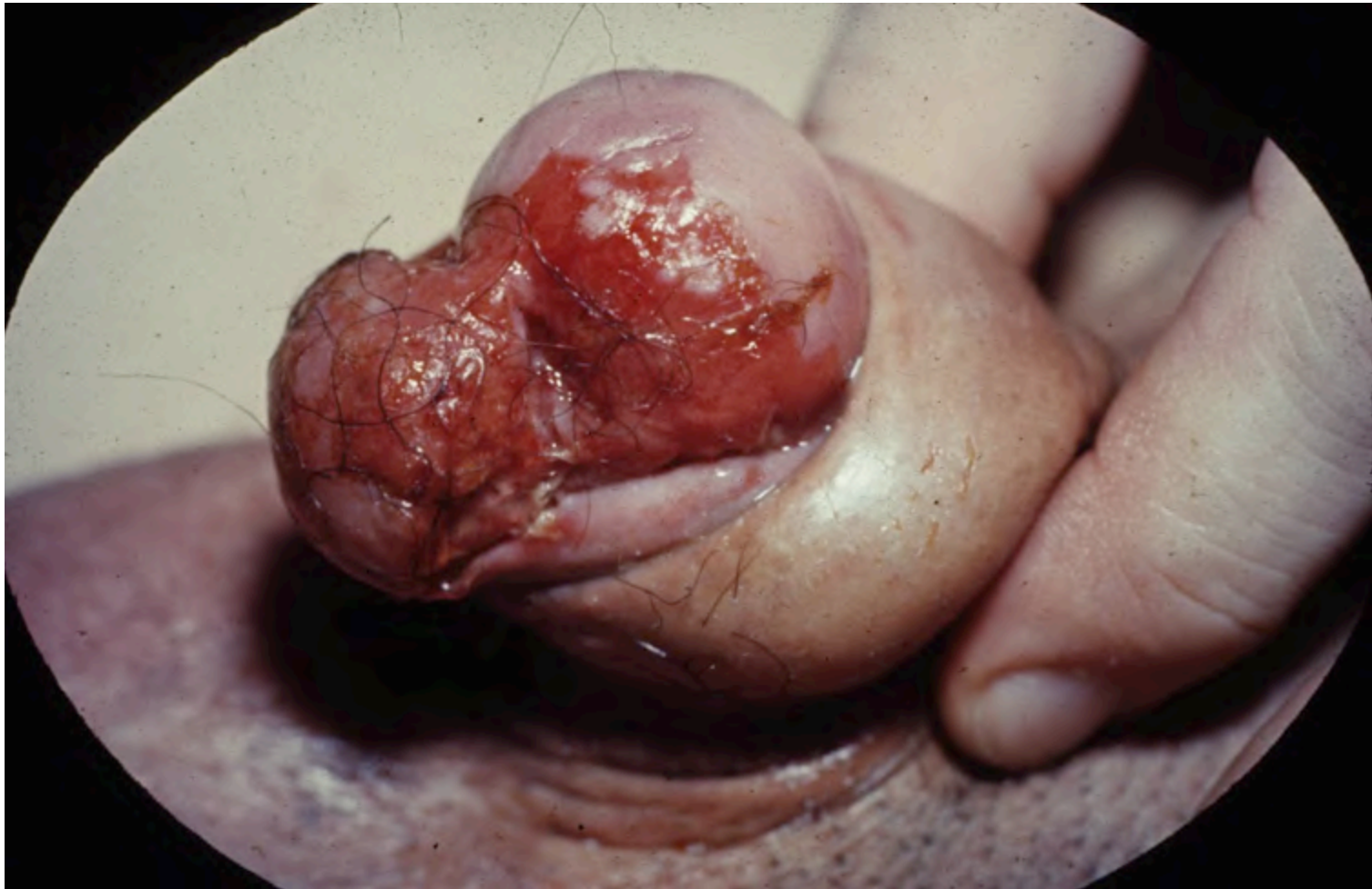
# OVARY CYSTADENOMA



# OVARY CYSTADENOMA



# PENIS, SQUAMOUS CELL CARCINOMA

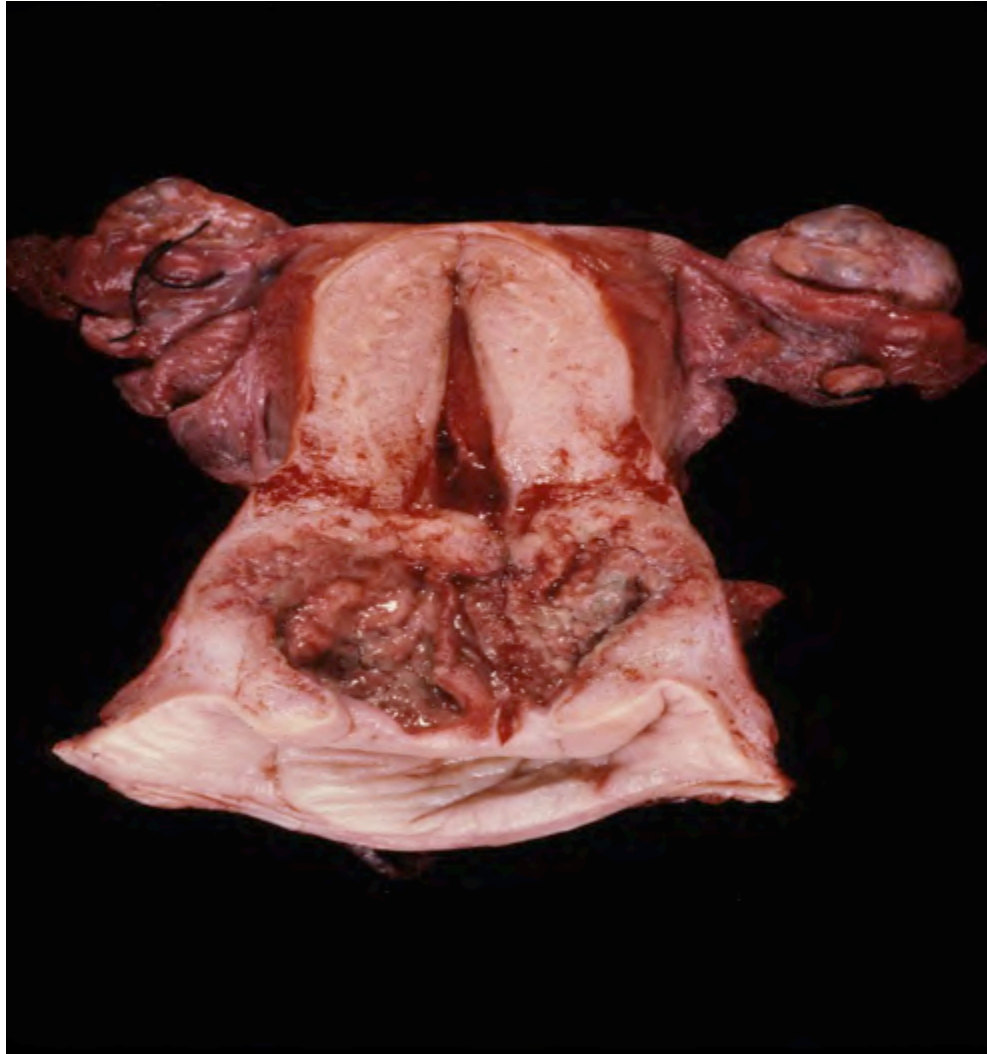


# VULVA, SQUAMOUS CELL CARCINOMA

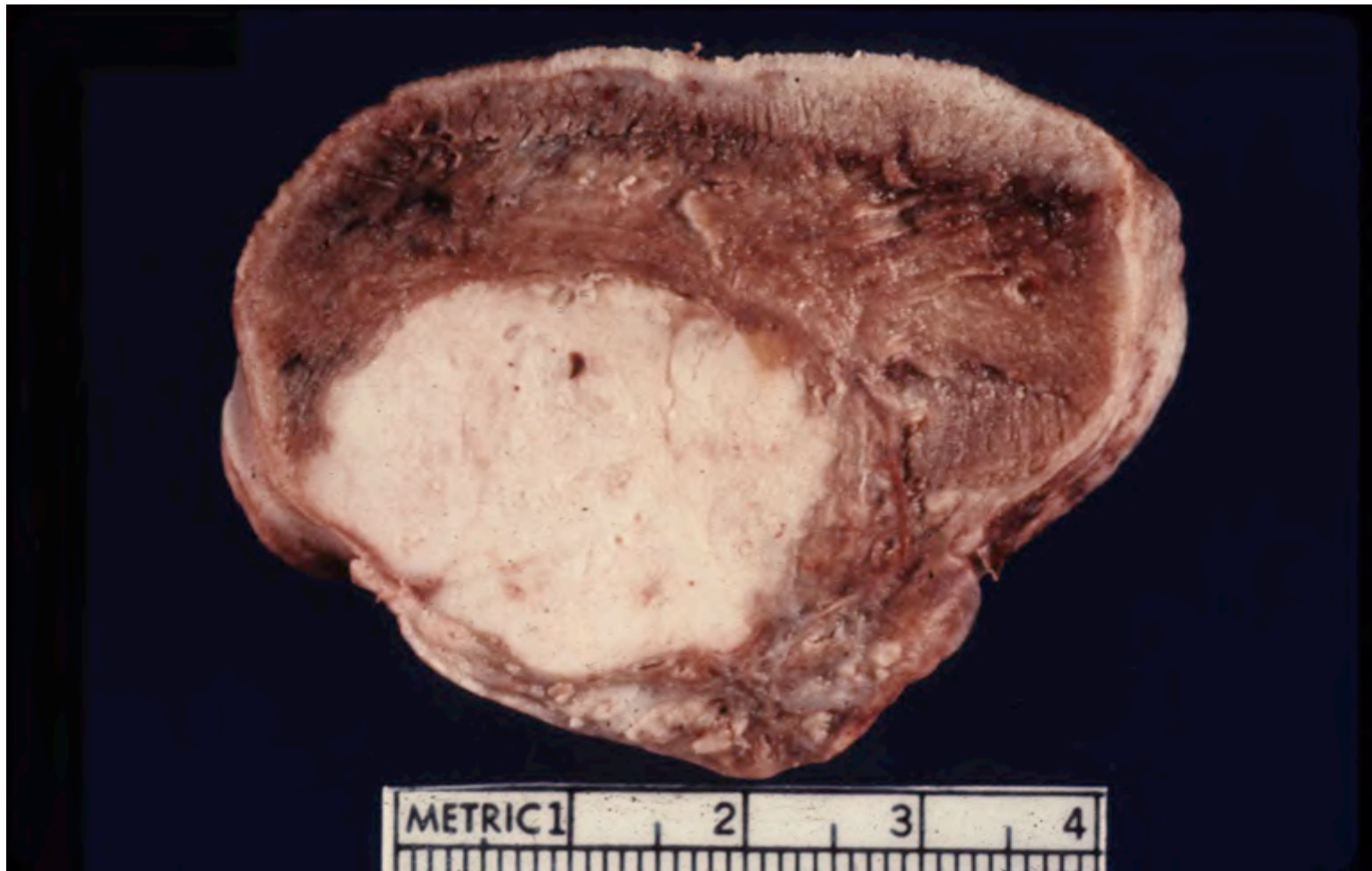




# CERVIX, SQUAMOUS CELL CARCINOMA



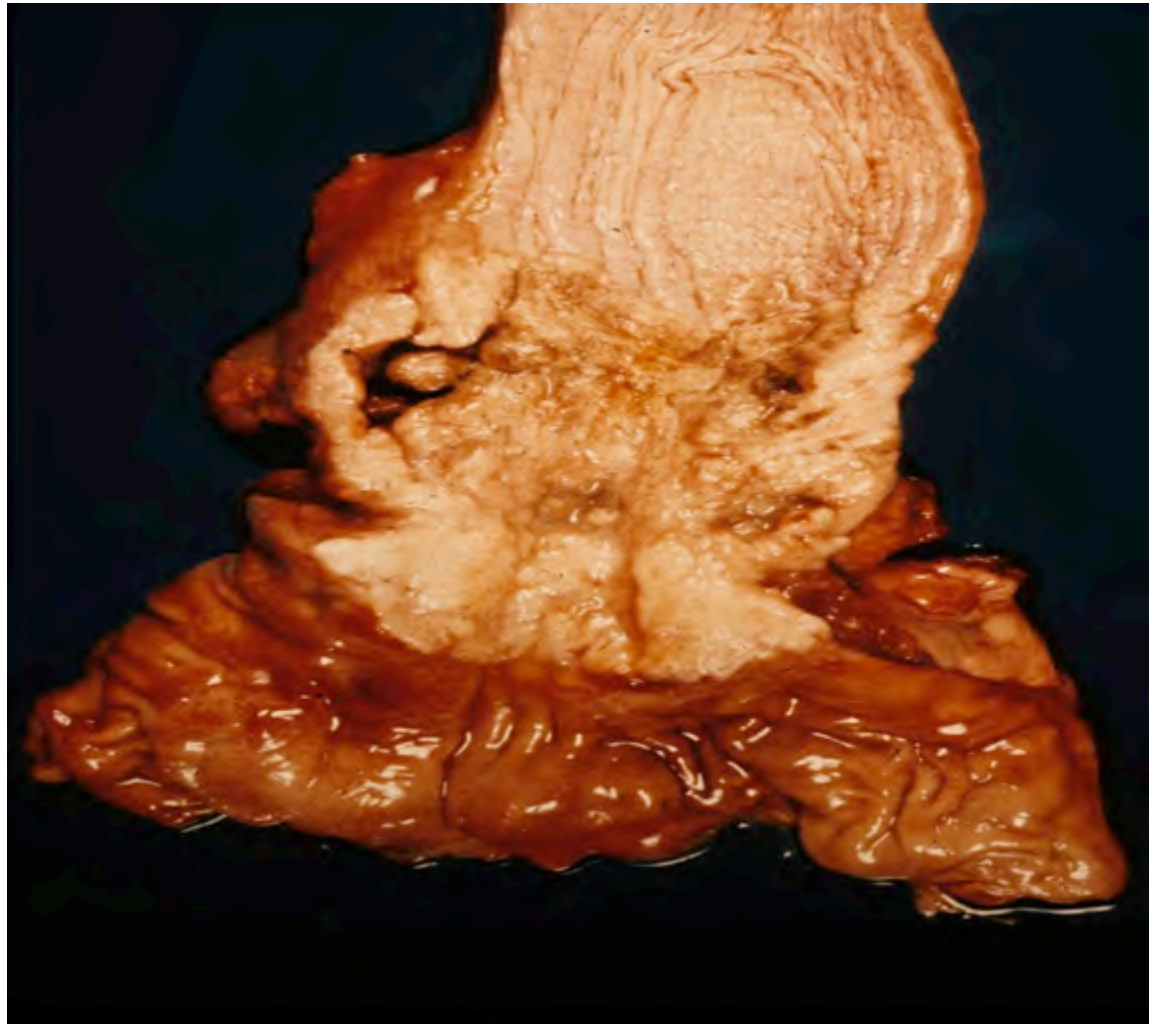
# TONGUE, SQUAMOUS CELL CARCINOMA



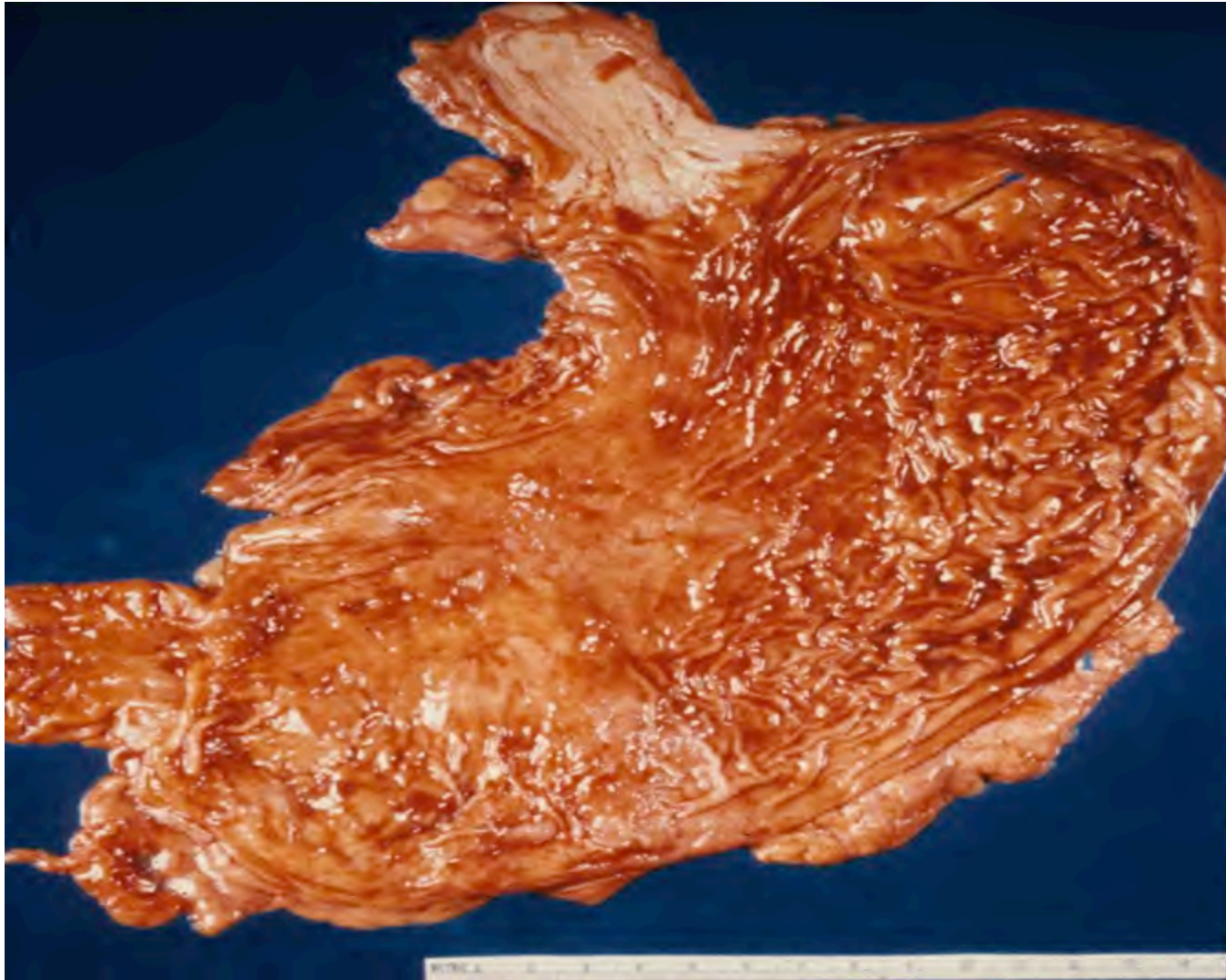
# LARYNX, SQUAMOUS CELL CARCINOMA



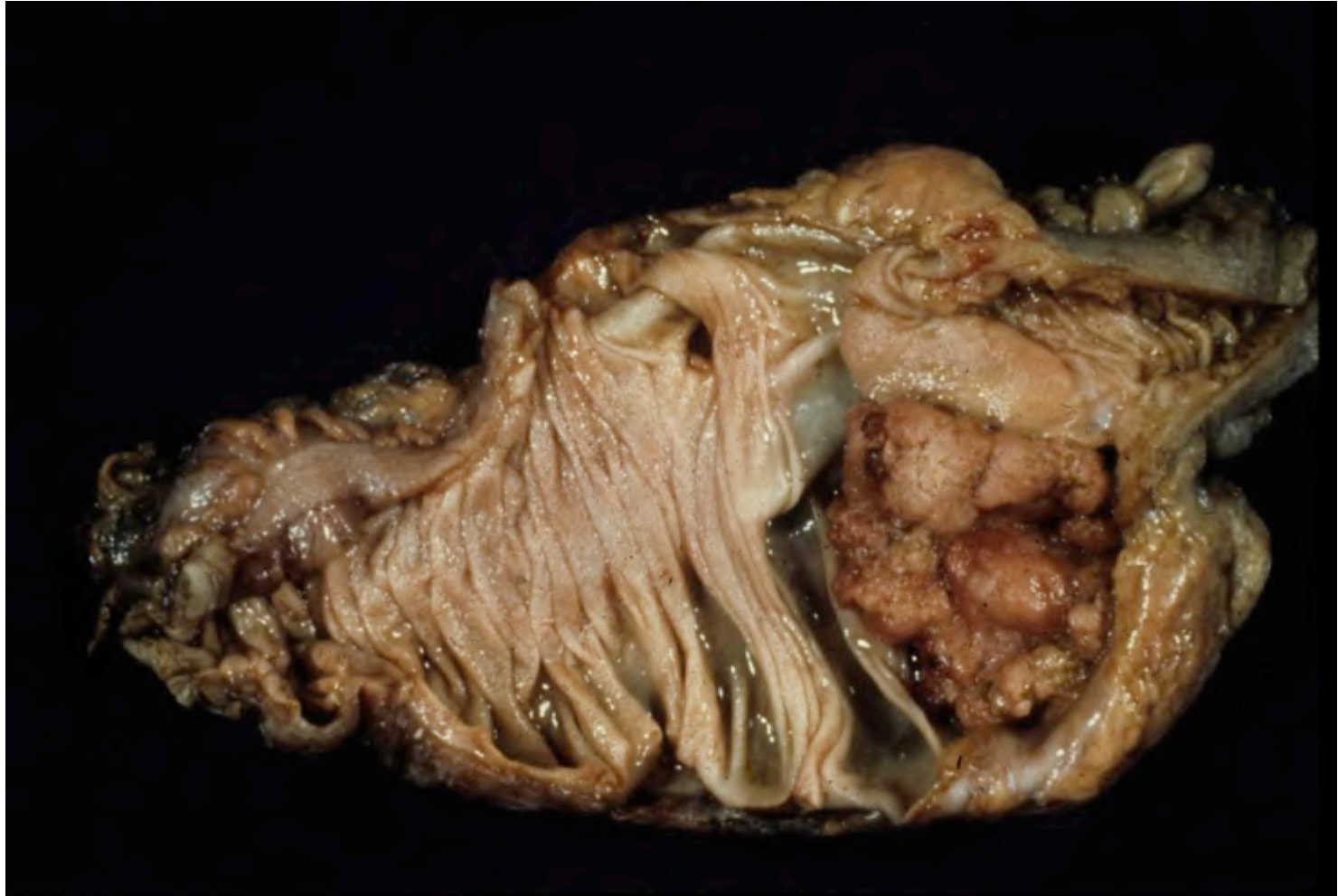
# ESOPHAGUS, SQUAMOUS CELL CARCINOMA



# STOMACH, ADENOCARCINOMA



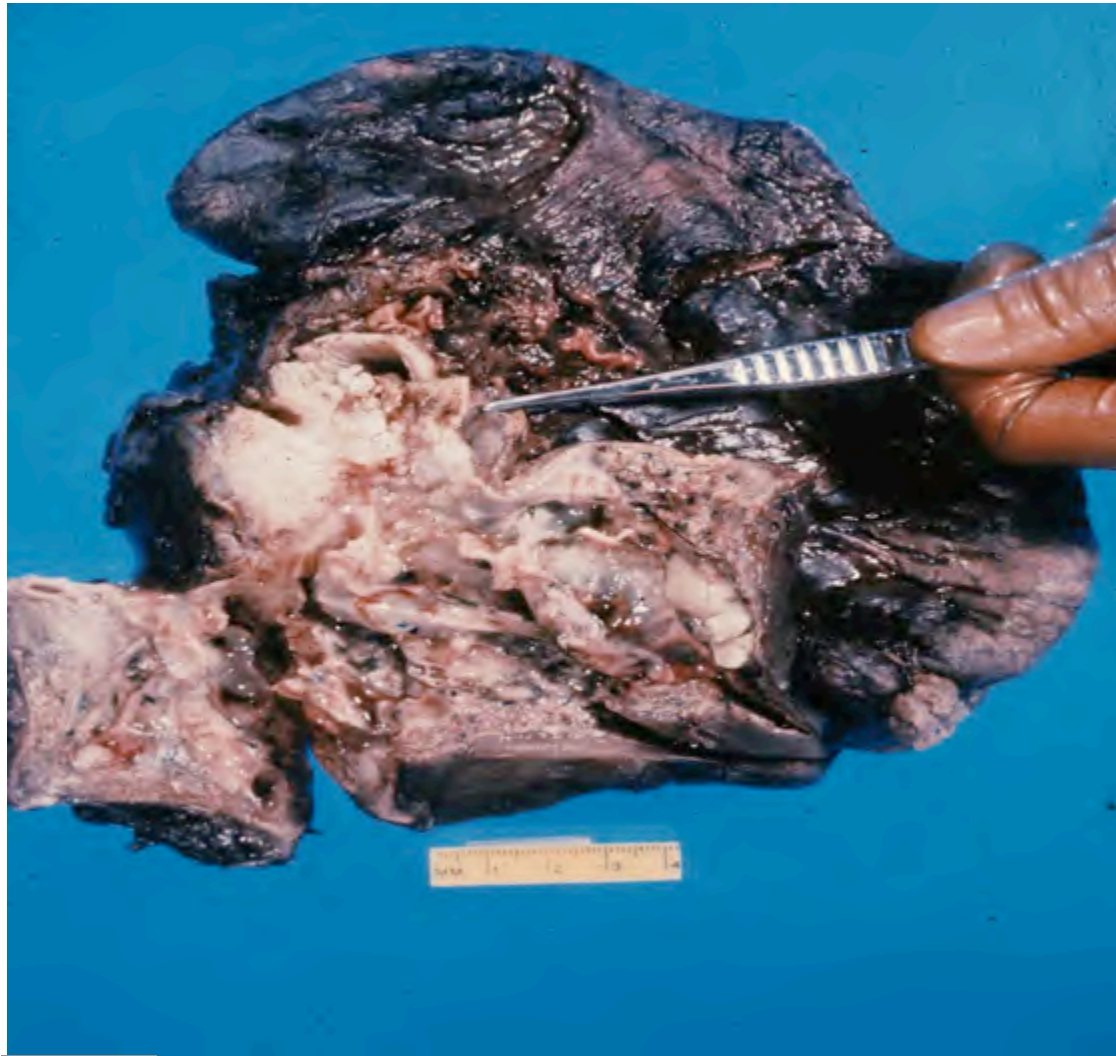
# COLON, ADENOCARCINOMA



# COLON, ADENOCARCINOMA

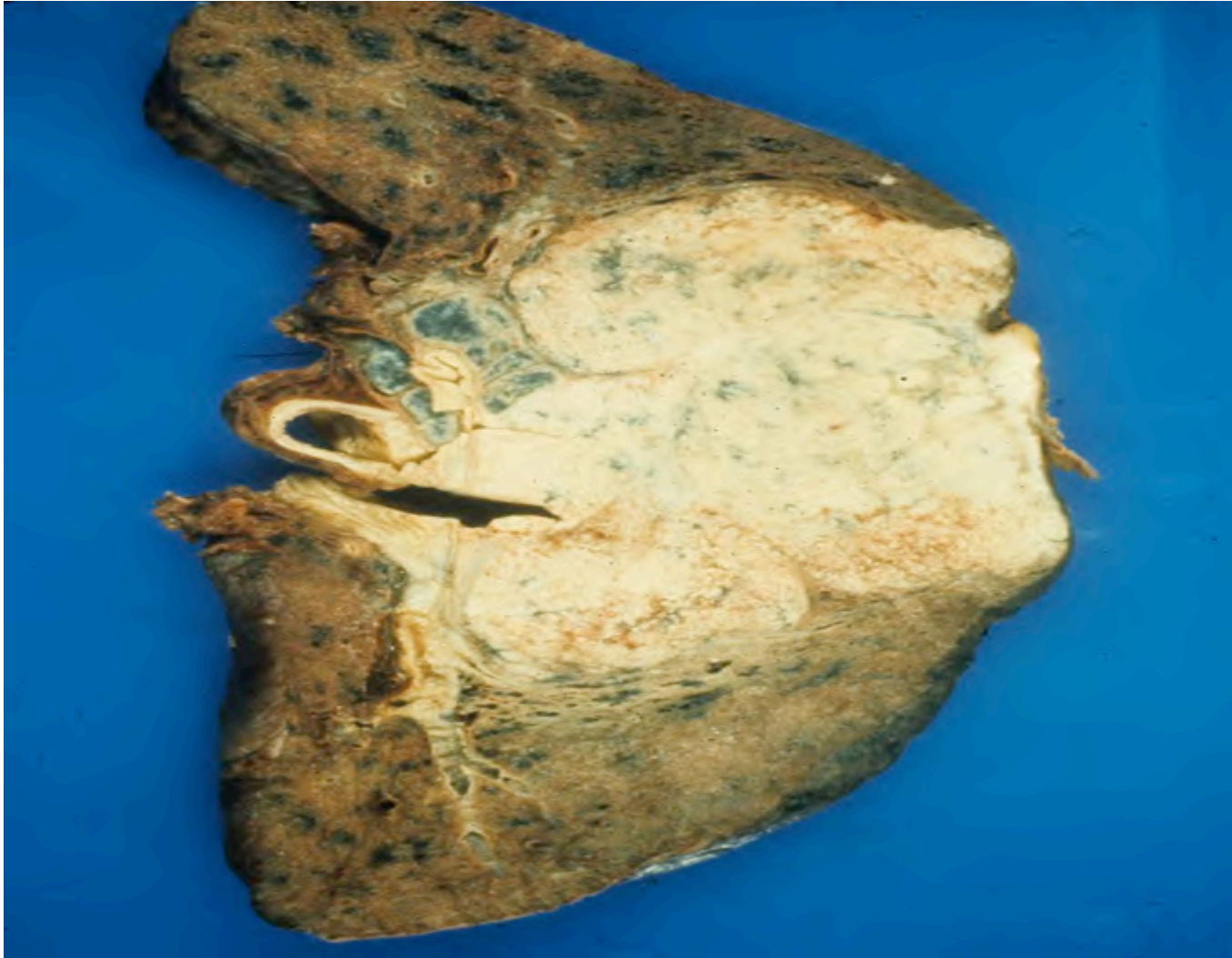


# LUNG, SQUAMOUS CELL CARCINOMA

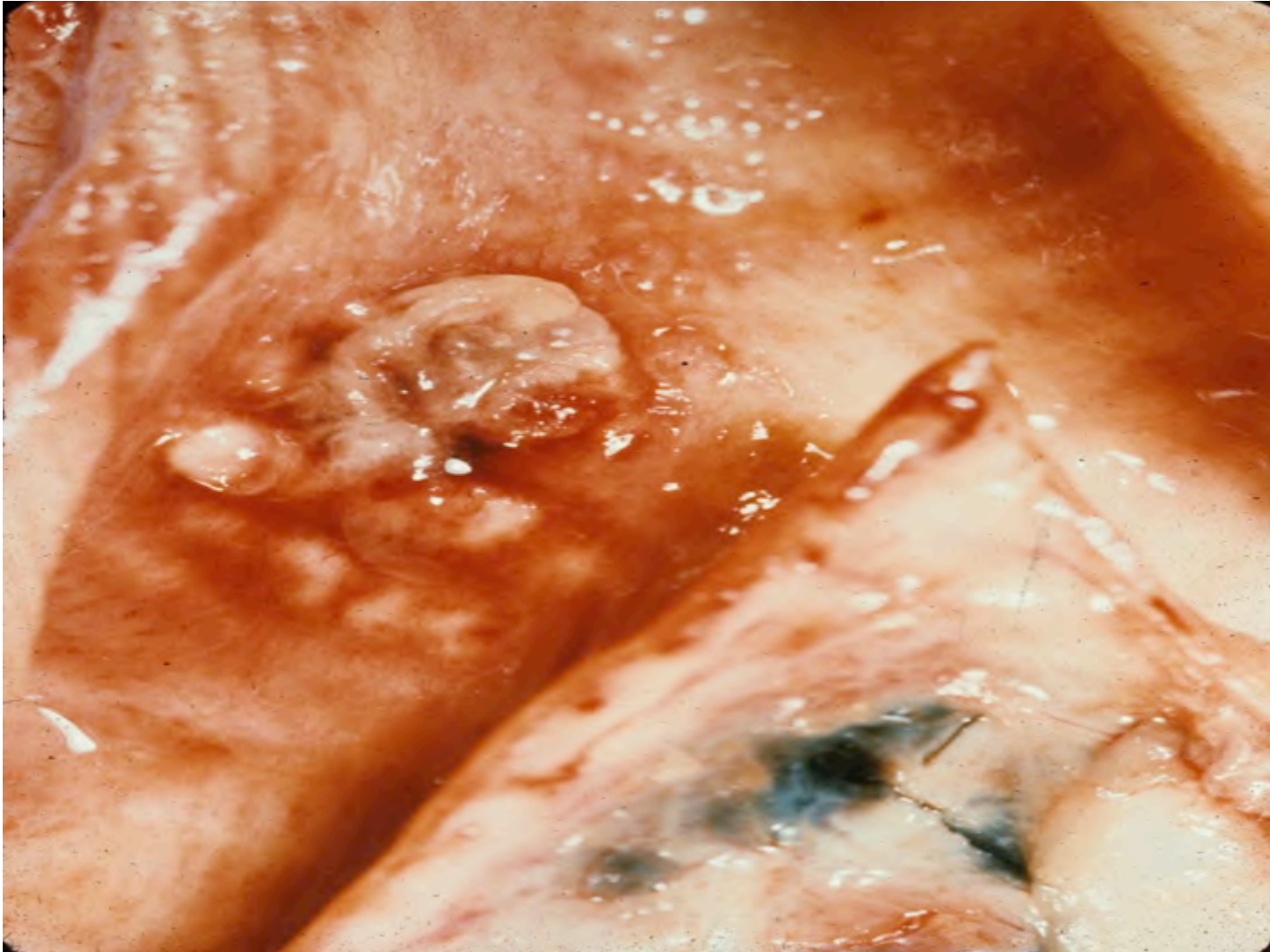




# LUNG, SQUAMOUS CELL CARCINOMA



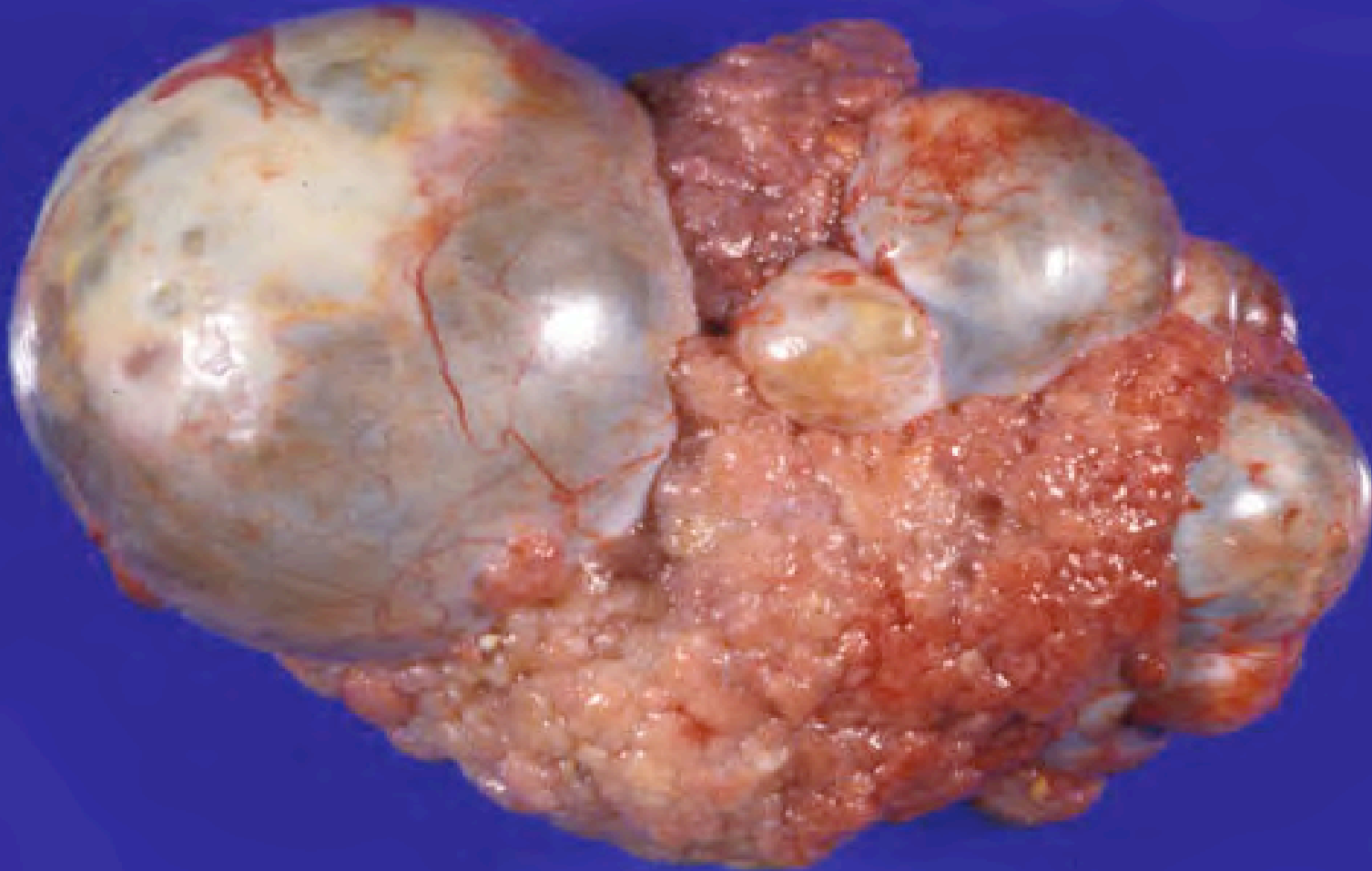
# BRONCHUS, SQUAMOUS CELL CARCINOMA



# BRONCHUS, SQUAMOUS CELL CARCINOMA



# OVARY CYSTADENOCARCINOMA



# OVARY CYSTADENOCARCINOMA



# SUPPORTING TISSUE NEOPLASMS

- LIPOMA.....LIPOSARCOMA
- CHONDROMA...CHONDROSARCOMA
- FIBROMA..... FIBROSARCOMA
- OSTEOMA..... OSTEOSARCOMA

ETC

# COLON, LIPOMA



# UTERUS, LEIOMYOMAS

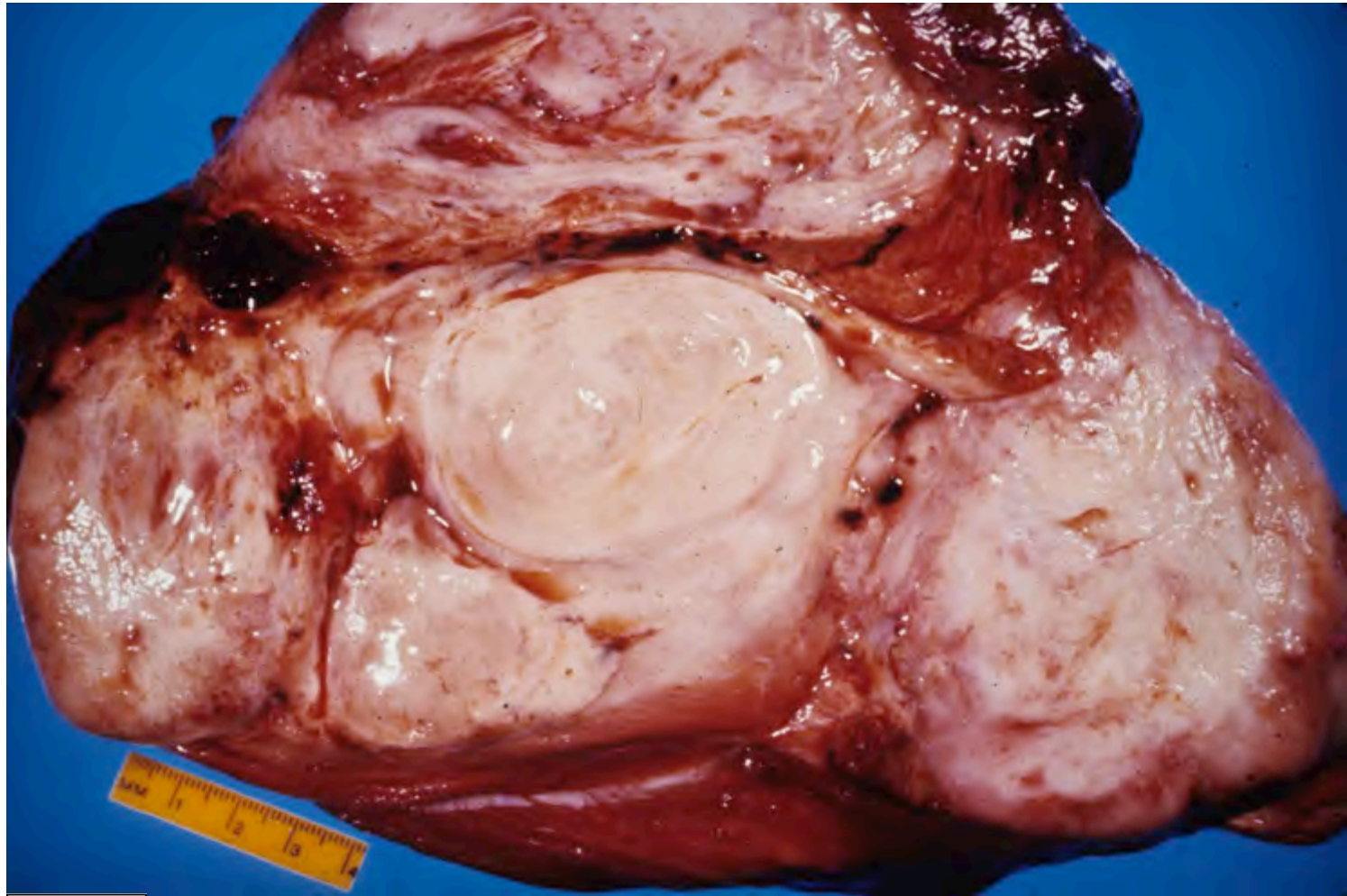




# BONE, OSTEOSARCOMA



# MUSCLE, RHABDOMYOSARCOMA



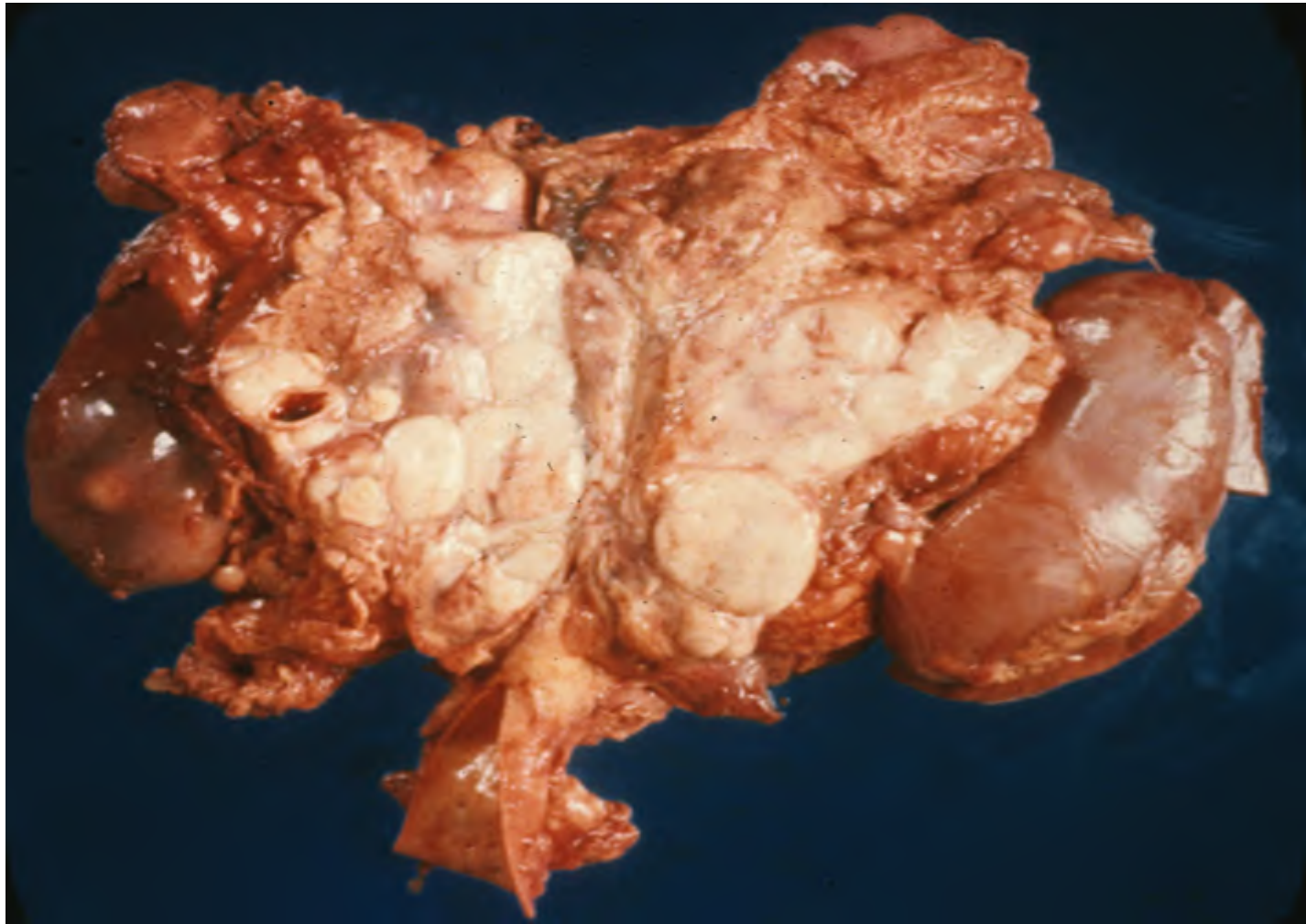
# LYMPHOID / HEMATOPOIETIC NEOPLASMS

- LYMPHOMA(S)
- LEUKEMIA(S)

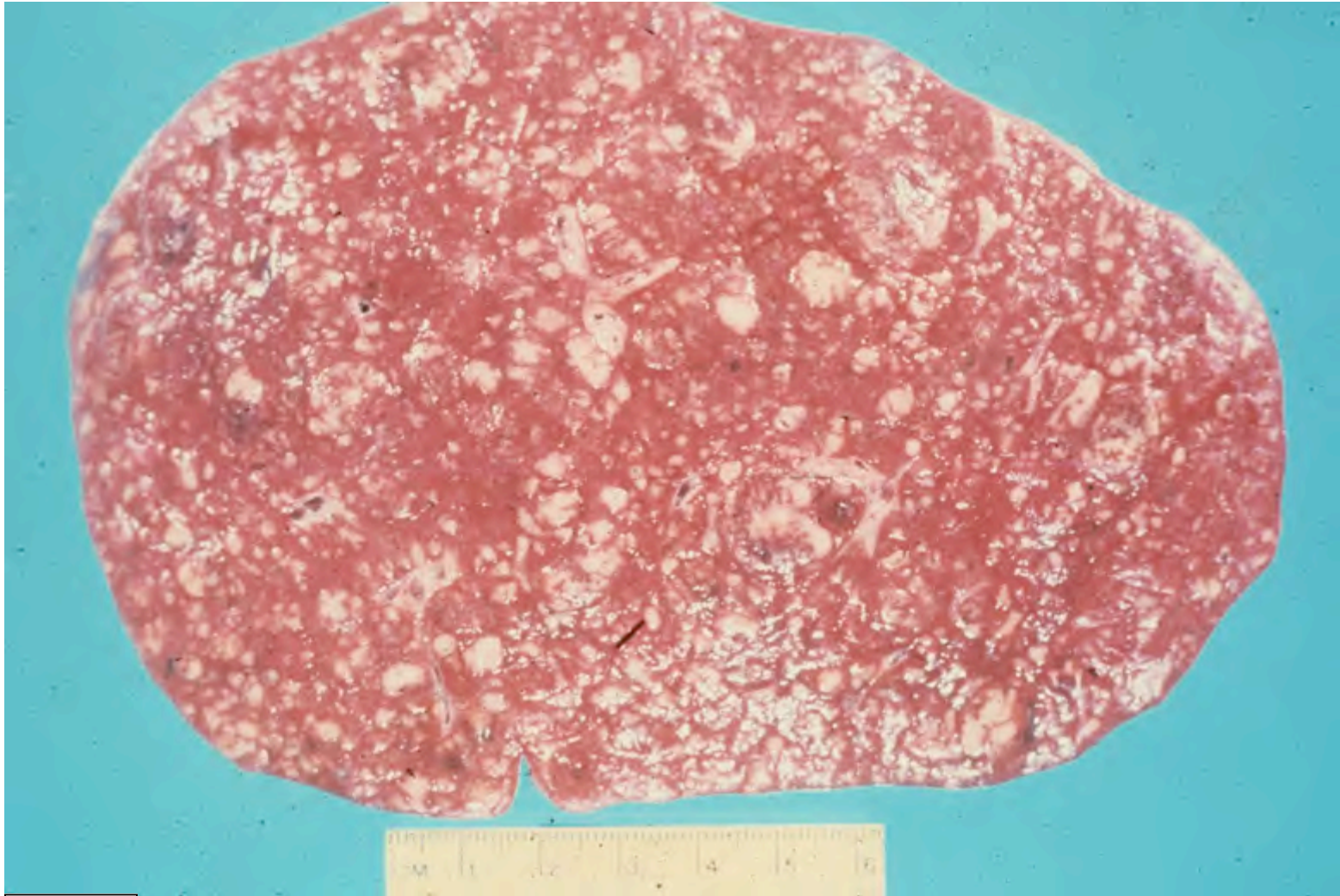
# LYMPHOMA



# RETROPERITONEUM, LYMPHOMA



# SPLEEN, LYMPHOMA



# KIDNEY, LYMPHOMA

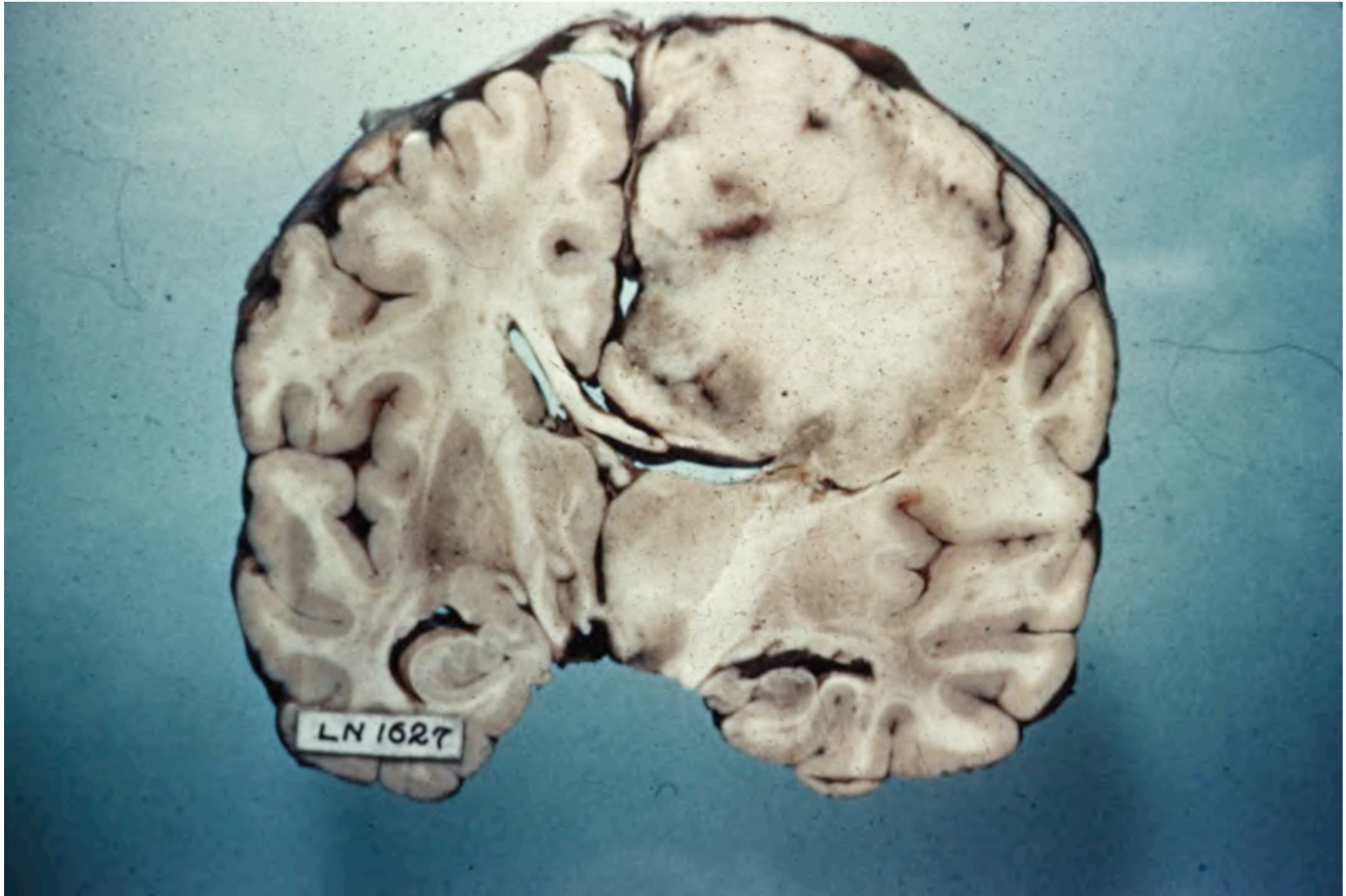


# CNS NEOPLASMS

- MENINGIOMA
- GLIOMA



# BRAIN, GLIOMA



# NEOPLASMS WITH MIXED DIFFERENTIATION

- CARCINOSARCOMA

- TERATOMA

BENIGN

MALIGNANT

# OVARY, TERATOMA



# OVARY, TERATOMA



# OVARY, TERATOMA



# Additional Source Information

for more information see: <http://open.umich.edu/wiki/CitationPolicy>

Slide 7: Source Undetermined  
Slide 8: Department of Pathology, University of Michigan  
Slide 9: Department of Pathology, University of Michigan  
Slide 10: Department of Pathology, University of Michigan  
Slide 12: G.D. Abrams, University of Michigan Medical School  
Slide 13: Source Undetermined  
Slide 14: Source Undetermined  
Slide 15: Source Undetermined  
Slide 16: Source Undetermined  
Slide 17: Source Undetermined  
Slide 18: Department of Pathology, University of Michigan  
Slide 19: Source Undetermined  
Slide 20: Department of Pathology, University of Michigan  
Slide 21: Source Undetermined  
Slide 22: Department of Pathology, University of Michigan  
Slide 23: Source Undetermined  
Slide 24: Source Undetermined  
Slide 25: Department of Pathology, University of Michigan  
Slide 26: Department of Pathology, University of Michigan  
Slide 27: Department of Pathology, University of Michigan  
Slide 28: Source Undetermined  
Slide 29: Source Undetermined  
Slide 31: Department of Pathology, University of Michigan  
Slide 32: Department of Pathology, University of Michigan  
Slide 33: Department of Pathology, University of Michigan  
Slide 34: Department of Pathology, University of Michigan  
Slide 36: Source Undetermined  
Slide 37: Department of Pathology, University of Michigan  
Slide 38: Department of Pathology, University of Michigan  
Slide 39: Department of Pathology, University of Michigan  
Slide 41: Department of Pathology, University of Michigan  
Slide 43: Department of Pathology, University of Michigan  
Slide 44: Department of Pathology, University of Michigan  
Slide 45: Department of Pathology, University of Michigan