

Author: Jonathan Trobe, MD, 2009

License: Unless otherwise noted, this material is made available under the terms of the **Creative Commons Attribution 3.0 License:**

<http://creativecommons.org/licenses/by/3.0/>

We have reviewed this material in accordance with U.S. Copyright Law **and have tried to maximize your ability to use, share, and adapt it.** The citation key on the following slide provides information about how you may share and adapt this material.

Copyright holders of content included in this material should contact open.michigan@umich.edu with any questions, corrections, or clarification regarding the use of content.

For more information about **how to cite** these materials visit <http://open.umich.edu/education/about/terms-of-use>.

Any **medical information** in this material is intended to inform and educate and is **not a tool for self-diagnosis** or a replacement for medical evaluation, advice, diagnosis or treatment by a healthcare professional. Please speak to your physician if you have questions about your medical condition.










Viewer discretion is advised. Some medical content is graphic and may not be suitable for all viewers.

Citation Key

for more information see <http://open.umich.edu/wiki/CitationPolicy>


Use + Share + Adapt

{ Content the copyright holder, author, or law permits you to use, share and adapt }


-  **Public Domain – Government** Works that are produced by the U.S. Government. (USC 17 § 105)
-  **Public Domain – Expired** Works that are no longer protected due to an expired copyright term.
-  **Public Domain – Self Dedicated** Works that a copyright holder has dedicated to the public domain.
-  **Creative Commons – Zero Waiver**
-  **Creative Commons – Attribution License**
-  **Creative Commons – Attribution Share Alike License**
-  **Creative Commons – Attribution Noncommercial License**
-  **Creative Commons – Attribution Noncommercial Share Alike License**
-  **GNU – Free Documentation License**

Make Your Own Assessment

{ Content Open Michigan believes can be used, shared, and adapted because it is ineligible for copyright. }

-  **Public Domain – Ineligible** Works that are ineligible for copyright protection in the U.S. (USC 17 § 102(b)) *laws in your jurisdiction may differ.

{ Content Open Michigan has used under a Fair Use determination. }

-  **Fair Use** Use of works that is determined to be Fair consistent with the U.S. Copyright Act. (USC 17 § 107) *laws in your jurisdiction may differ.
Our determination **DOES NOT** mean that all uses of this 3rd-party content are Fair Uses and we **DO NOT** guarantee that your use of the content is Fair.
To use this content you should **do your own independent analysis** to determine whether or not your use will be Fair.

COMMON EYE SYMPTOMS

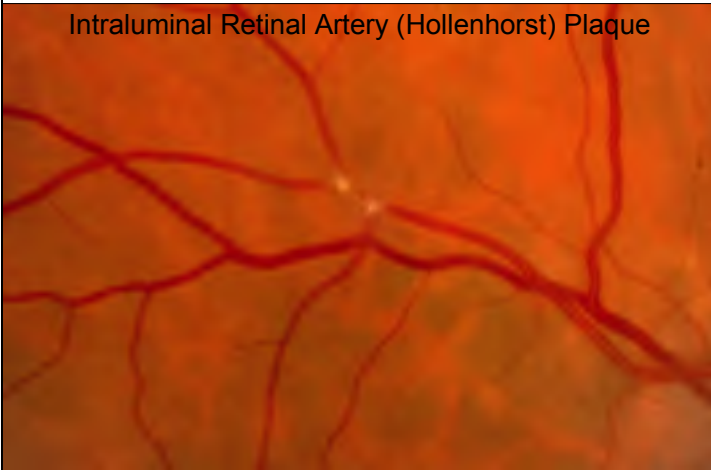
Jonathan D. Trobe, MD
Departments of Ophthalmology and Neurology
University of Michigan Medical School

Causes of Transient Visual Loss

- Monocular
 1. If abrupt onset, usually ischemia to retina or optic nerve
 2. Local causes: papilledema or impending retinal or optic nerve vascular occlusion
 3. Remote causes: cervical carotid artery stenosis or systemic hypotension

Abrupt visual loss in one eye is usually caused by ischemia. The lack of perfusion may be occurring from a problem in the eye (crowded optic disc, narrowed ocular vessels), in the carotid artery, or because of transient systemic hypotension.

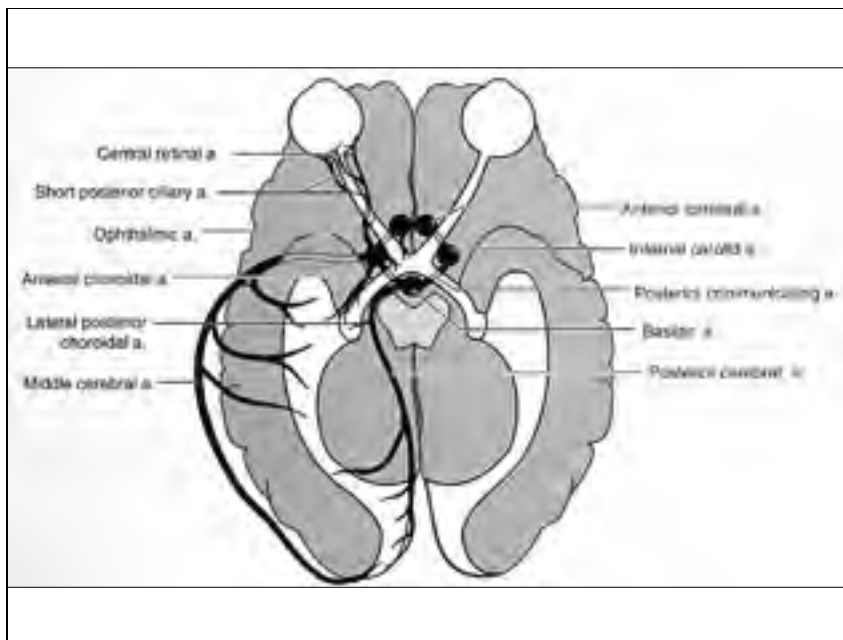
Intraluminal Retinal Artery (Hollenhorst) Plaque



 PC-INEL Source Undetermined


Causes of Transient Visual Loss

- Binocular
 1. Visual cortex ischemia
 2. Migraine




PC-INEL Source Undetermined




 S. Jähnichen (Wikimedia Commons)



 S. Jähnichen (Wikimedia Commons)



 S. Jähnichen (Wikimedia Commons)

**Causes of Acute
Persistent Visual Loss**

1. Vitreous hemorrhage
2. Retinal detachment
3. Retinal hemorrhage
4. Retinal infection
5. Retinal artery occlusion

**Causes of Acute
Persistent Visual Loss**

6. Optic nerve infarction (ischemic optic neuropathy)
7. Optic neuritis
8. Optic nerve compression/infiltration by cancer

**Causes of Acute
Persistent Visual Loss**

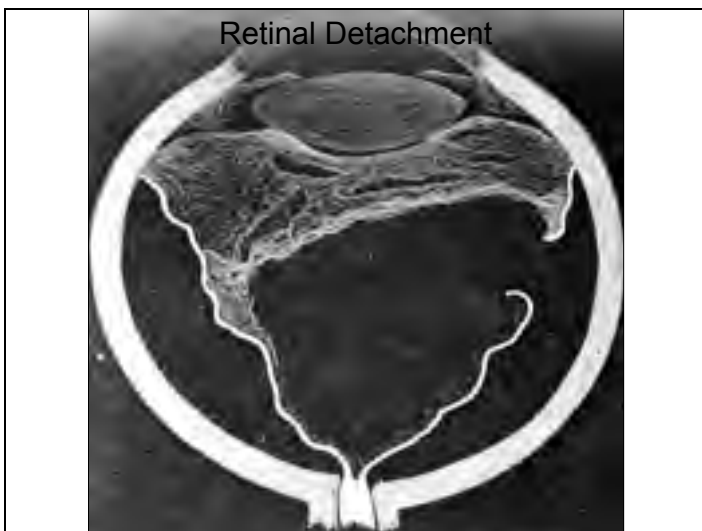
9. Occipital lobe infarction

Causes of Acute Persistent Visual Loss

10. Psychogenic illness

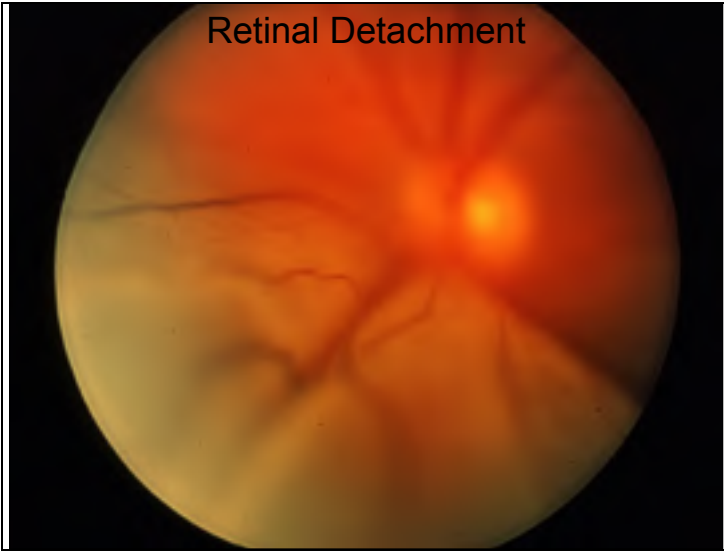


 Source Undetermined

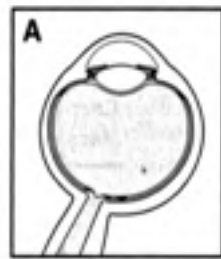


 Source Undetermined

Retinal Detachment



PC-INEL Source Undetermined

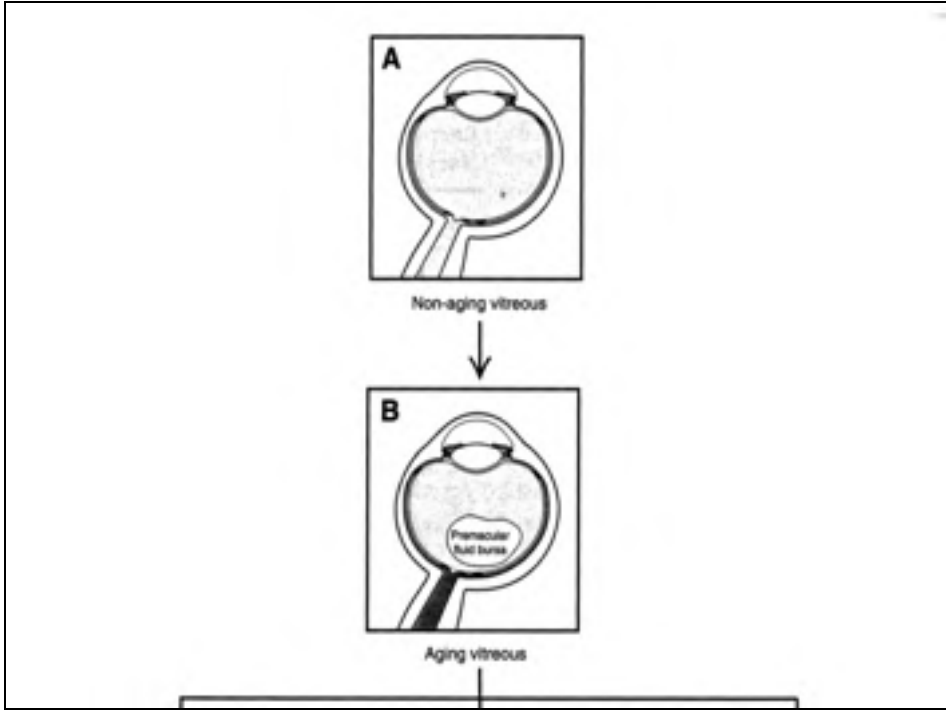


Non-aging vitreous

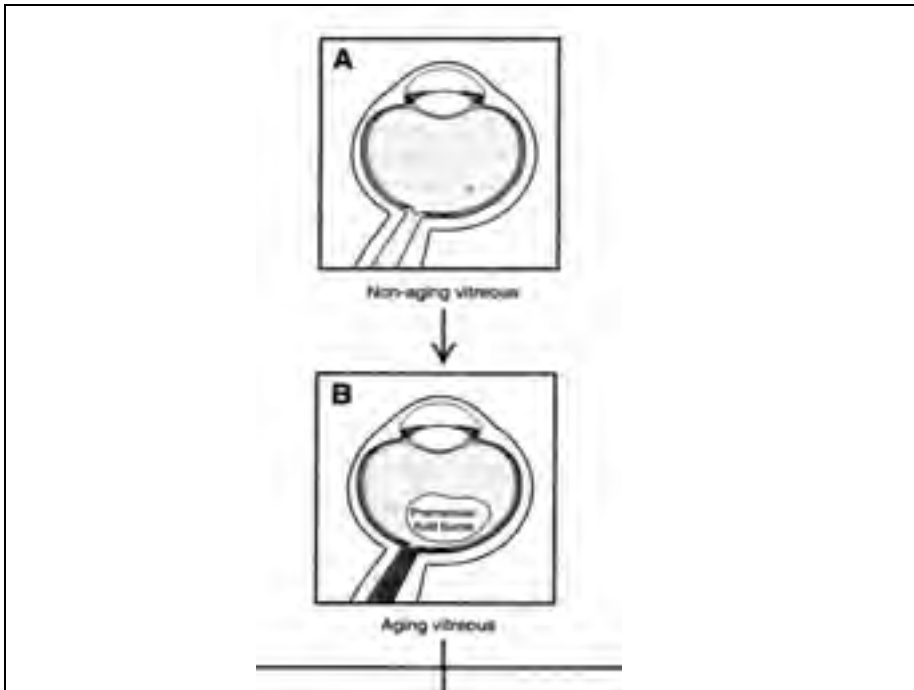


Aging vitreous

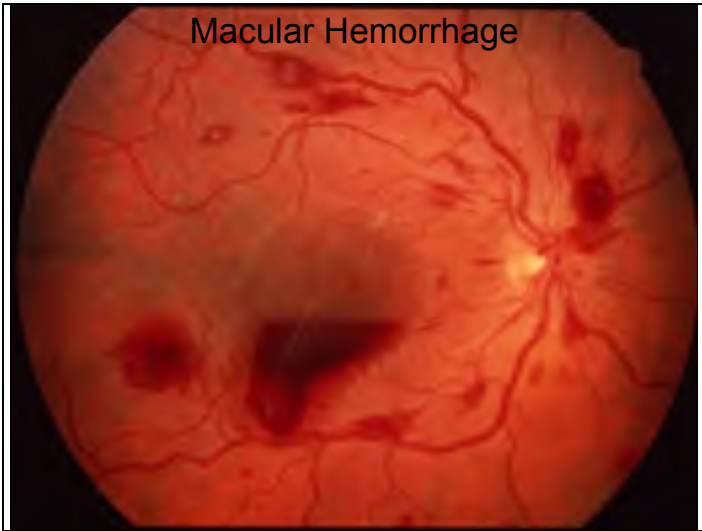
PC-INEL Source Undetermined



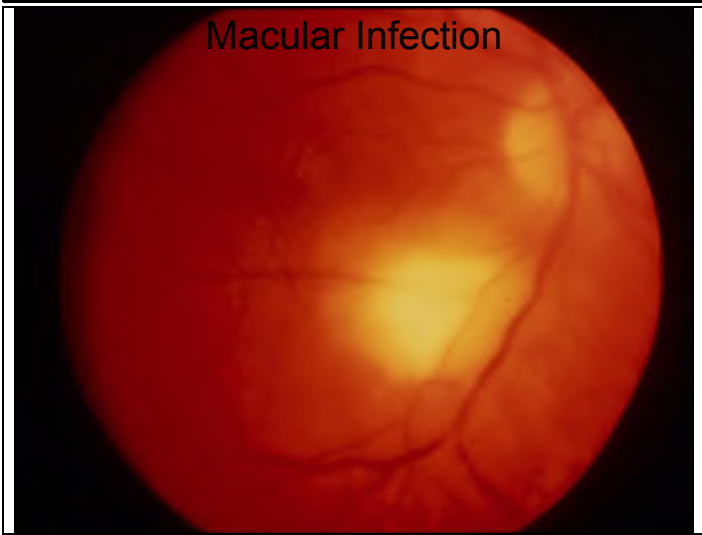
PD-INEL Source Undetermined




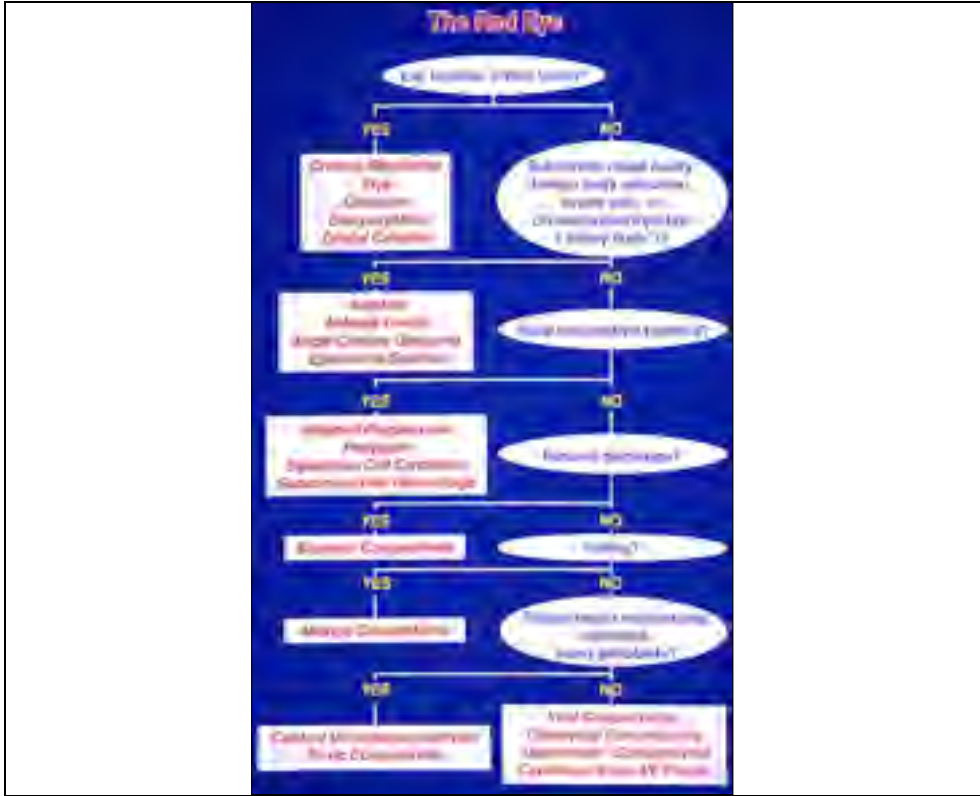
PD-INEL Source Undetermined



 Source Undetermined



 Source Undetermined



PD-INEL Source Undetermined



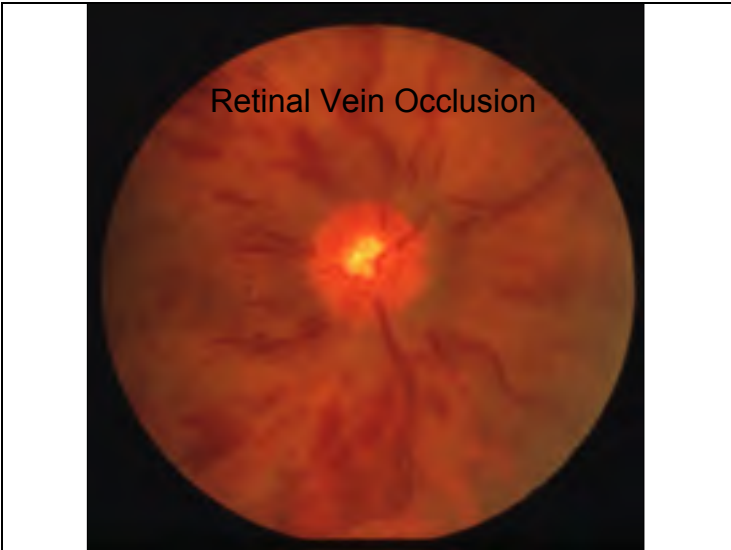
PD-INEL Source Undetermined

Normal Retina



 Source Undetermined

Retinal Vein Occlusion



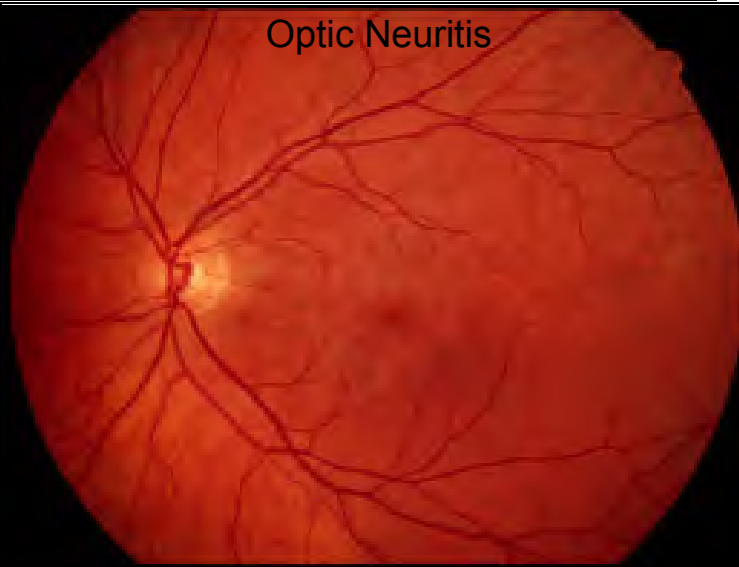
 Source Undetermined

Optic Nerve Infarction



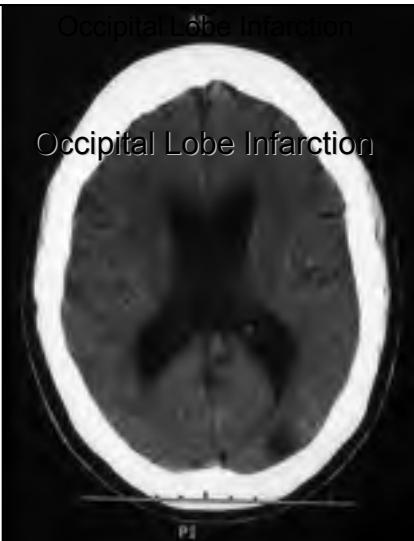
PD-INEL Source Undetermined

Optic Neuritis



PD-INEL Source Undetermined

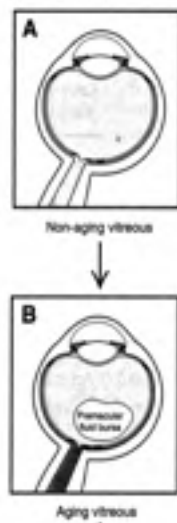
Occipital Lobe Infarction
Occipital Lobe Infarction



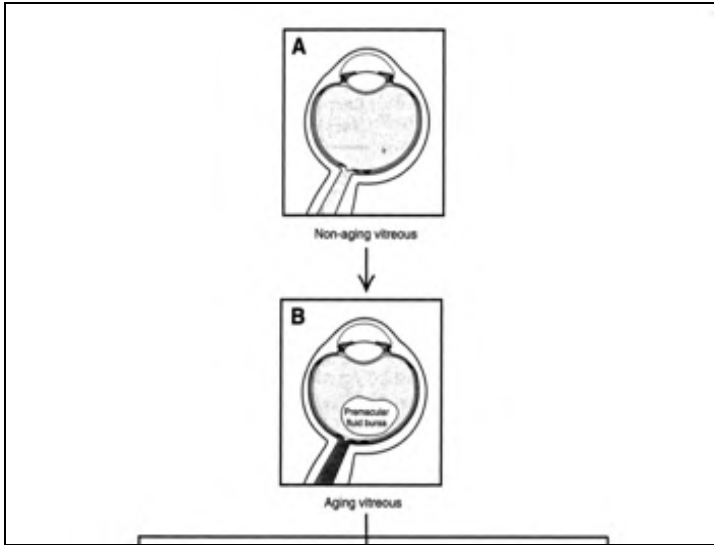
PD-INEL Source Undetermined


Causes of Flashes of Light

- **Monocular**
 1. Vitreoretinal traction
 2. Impending retinal vascular occlusion
- **Binocular**
 1. Migraine
 2. Occipital lobe ischemia




 Source Undetermined



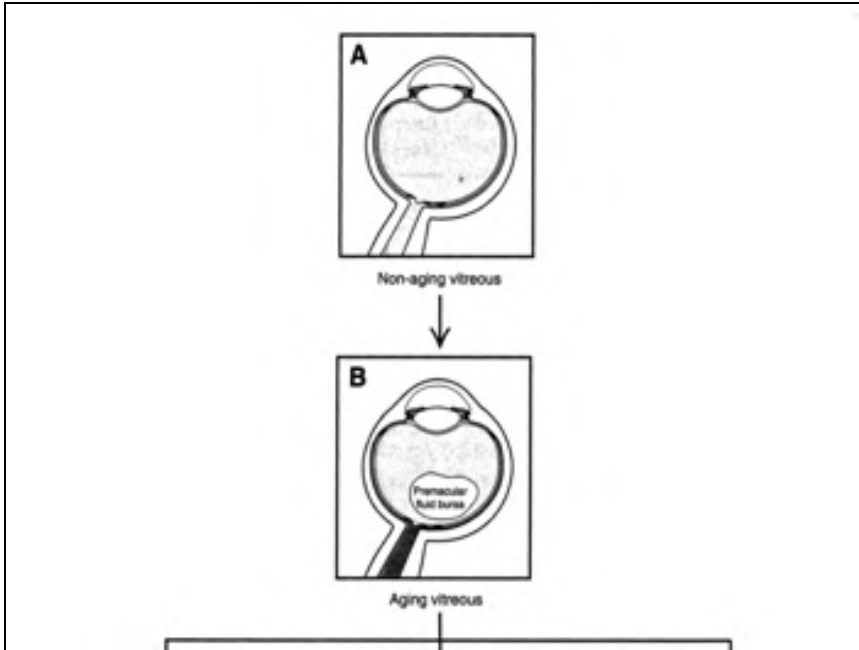
 Source Undetermined



 S. Jähnichen (Wikimedia Commons)

Causes of Floaters

- Aging or myopic vitreous
- Vitreous detachment
- Vitreous hemorrhage
- Vitreous inflammation




PC-ENEL Source Undetermined

Causes of Diplopia

- Binocular
 1. Ocular misalignment
 2. Psychogenic
- Monocular
 1. Uncorrected refractive error
 2. Corneal lesion
 3. Cataract



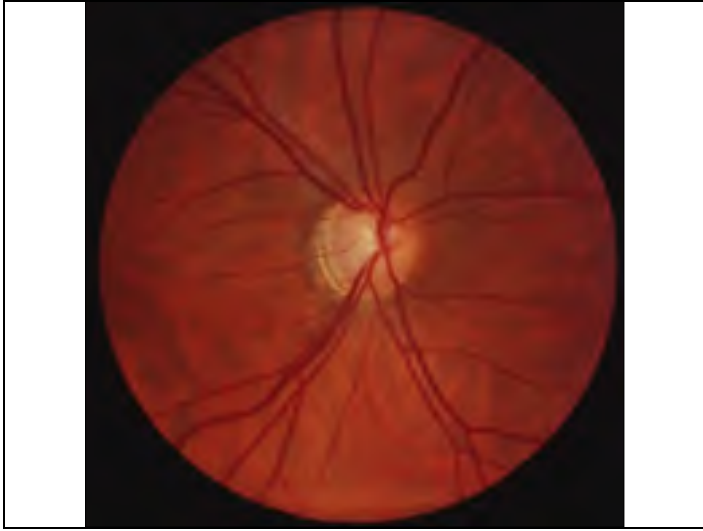
 Trobe, J. *The Physician's Guide to Eye Care*. 3e. American Academy of Ophthalmology, 2006.


Causes of Optic Disc Excavation

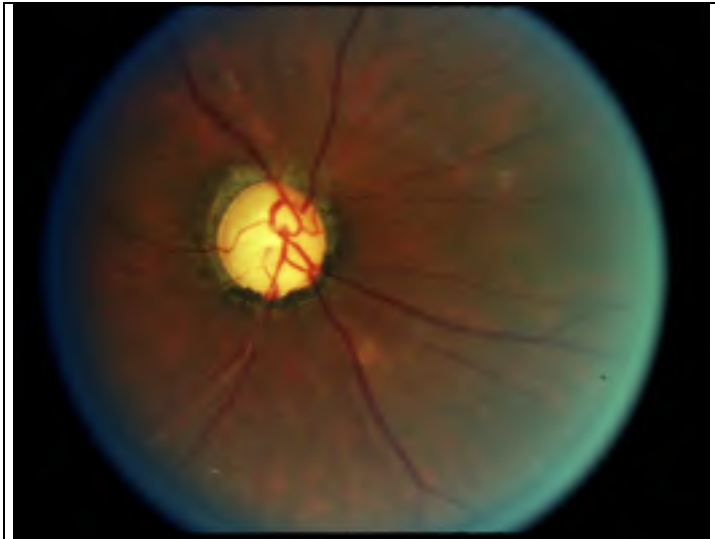
- Physiologic
- Glaucoma
- Other optic neuropathies




 Source Undetermined



 Source Undetermined



 Source Undetermined

Additional Source Information

for more information see: <http://open.umich.edu/wiki/CitationPolicy>

Page 3 (Bottom Image) – Source Undetermined

Page 4 (Bottom Image) – Source Undetermined

Page 5 (Top Image) – “Beginning aura of a migraine” S. Jähnichen (Wikimedia Commons)

[http://commons.wikimedia.org/wiki/File:Fortifikation_\(Migr%C3%A4ne\).jpg](http://commons.wikimedia.org/wiki/File:Fortifikation_(Migr%C3%A4ne).jpg)

replaced an image of an aura forming around a wrist watch from Trobe, J. The Physician’s Guide to Eye Care. 3e. American Academy of Ophthalmology, 2006.

Page 5 (Middle Image) – “Mid-stage of migraine aura” S. Jähnichen (Wikimedia Commons)

[http://commons.wikimedia.org/wiki/File:Negatives_Skotom_\(Brandenburger_Tor_Blaue_Stunde\)_1.jpg](http://commons.wikimedia.org/wiki/File:Negatives_Skotom_(Brandenburger_Tor_Blaue_Stunde)_1.jpg)

replaced an image of an aura forming around a wrist watch from Trobe, J. The Physician’s Guide to Eye Care. 3e. American Academy of Ophthalmology, 2006.

Page 5 (Bottom Image) – “Full aura of migraine” S. Jähnichen (Wikimedia Commons)

[http://commons.wikimedia.org/wiki/File:Gesichtsfeldausfall_\(Brandenburger_Tor_Blaue_Stunde\)_1.jpg](http://commons.wikimedia.org/wiki/File:Gesichtsfeldausfall_(Brandenburger_Tor_Blaue_Stunde)_1.jpg)

replaced an image of an aura forming around a wrist watch from Trobe, J. The Physician’s Guide to Eye Care. 3e. American Academy of Ophthalmology, 2006.

Page 7 (Middle Image) – Source Undetermined

Page 7 (Bottom Image) – Source Undetermined

Page 8 (Top Image) – Source Undetermined

Page 8 (Bottom Image) – Source Undetermined

Page 9 (Top Image) – Source Undetermined

Page 9 (Bottom Image) – Source Undetermined

Page 10 (Top Image) – Source Undetermined

Page 10 (Bottom Image) – Source Undetermined

Page 11 (Top Image) – Source Undetermined

Page 11 (Bottom Image) – Source Undetermined

Page 12 (Top Image) – Source Undetermined

Page 12 (Bottom Image) – Source Undetermined

Page 13 (Top Image) – Source Undetermined

Page 13 (Middle Image) – Source Undetermined

Page 13 (Bottom Image) – Source Undetermined

Page 14 (Bottom Image) – Source Undetermined

Page 15 (Top Image) – Source Undetermined

Page 15 (Middle Image) – “Mid-stage of migraine aura” S. Jähnichen (Wikimedia Commons)

[http://commons.wikimedia.org/wiki/File:Negatives_Skotom_\(Brandenburger_Tor_Blaue_Stunde\)_1.jpg](http://commons.wikimedia.org/wiki/File:Negatives_Skotom_(Brandenburger_Tor_Blaue_Stunde)_1.jpg)

replaced an image of an aura forming around a wrist watch from Trobe, J. The Physician’s Guide to Eye Care. 3e. American Academy of Ophthalmology, 2006.

Page 16 (Top Image) – Source Undetermined

Page 17 (Top Image) – Trobe, J. *The Physician's Guide to Eye Care*. 3e. American Academy of Ophthalmology, 2006.

Page 17 (Bottom Image) – Source Undetermined

Page 18 (Top Image) – Source Undetermined

Page 18 (Bottom Image) – Source Undetermined