

Author(s): Seetha Monrad, M.D., 2009

License: Unless otherwise noted, this material is made available under the terms of the **Creative Commons Attribution–Noncommercial–Share Alike 3.0 License:**
<http://creativecommons.org/licenses/by-nc-sa/3.0/>

We have reviewed this material in accordance with U.S. Copyright Law **and have tried to maximize your ability to use, share, and adapt it.** The citation key on the following slide provides information about how you may share and adapt this material.

Copyright holders of content included in this material should contact open.michigan@umich.edu with any questions, corrections, or clarification regarding the use of content.

For more information about **how to cite** these materials visit <http://open.umich.edu/education/about/terms-of-use>.

Any **medical information** in this material is intended to inform and educate and is **not a tool for self-diagnosis** or a replacement for medical evaluation, advice, diagnosis or treatment by a healthcare professional. Please speak to your physician if you have questions about your medical condition.

Viewer discretion is advised: Some medical content is graphic and may not be suitable for all viewers.

Citation Key

for more information see: <http://open.umich.edu/wiki/CitationPolicy>

Use + Share + Adapt

{ Content the copyright holder, author, or law permits you to use, share and adapt. }

-  **Public Domain – Government:** Works that are produced by the U.S. Government. (17 USC § 105)
-  **Public Domain – Expired:** Works that are no longer protected due to an expired copyright term.
-  **Public Domain – Self Dedicated:** Works that a copyright holder has dedicated to the public domain.
-  **Creative Commons – Zero Waiver**
-  **Creative Commons – Attribution License**
-  **Creative Commons – Attribution Share Alike License**
-  **Creative Commons – Attribution Noncommercial License**
-  **Creative Commons – Attribution Noncommercial Share Alike License**
-  **GNU – Free Documentation License**

Make Your Own Assessment

{ Content Open.Michigan believes can be used, shared, and adapted because it is ineligible for copyright. }

-  **Public Domain – Ineligible:** Works that are ineligible for copyright protection in the U.S. (17 USC § 102(b)) *laws in your jurisdiction may differ

{ Content Open.Michigan has used under a Fair Use determination. }

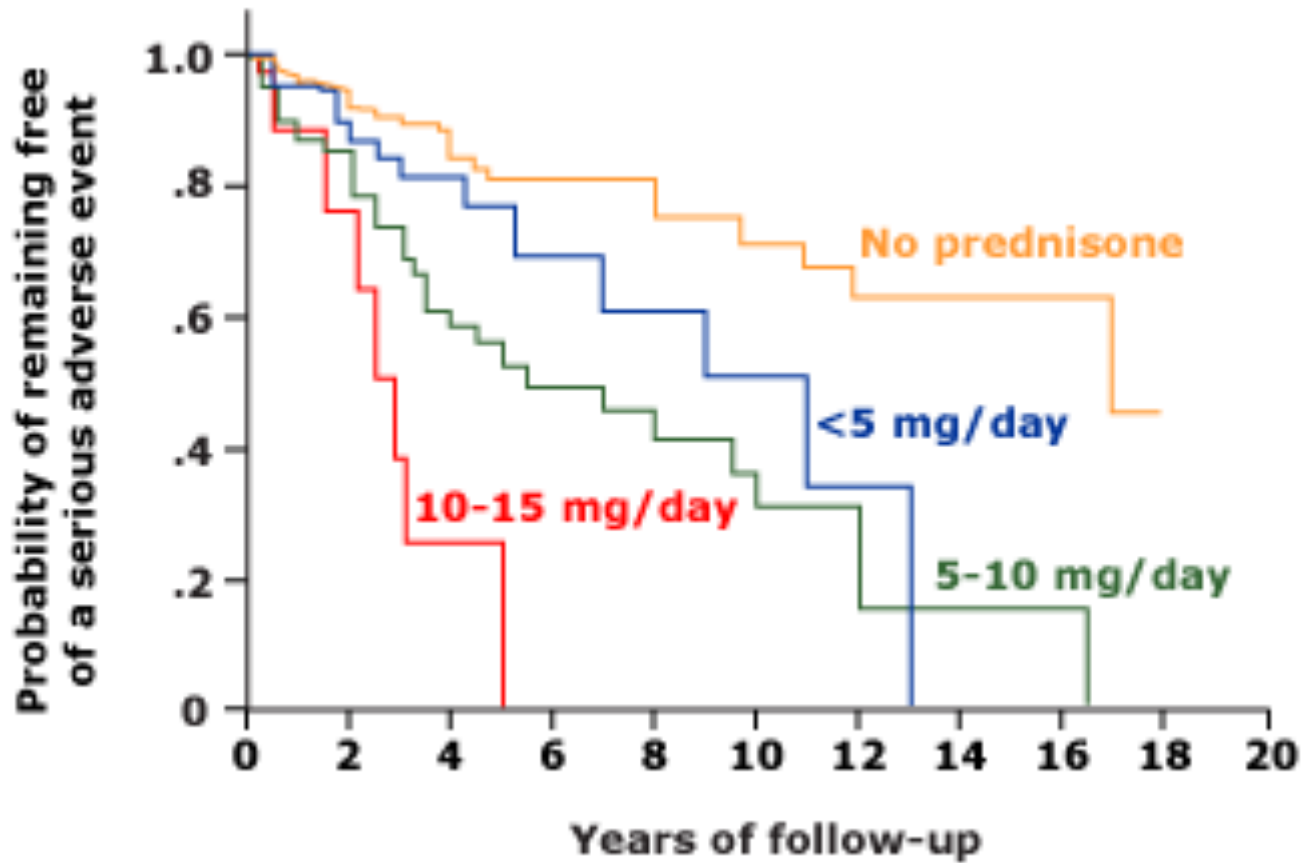
-  **Fair Use:** Use of works that is determined to be Fair consistent with the U.S. Copyright Act. (17 USC § 107) *laws in your jurisdiction may differ

Our determination **DOES NOT** mean that all uses of this 3rd-party content are Fair Uses and we **DO NOT** guarantee that your use of the content is Fair.

To use this content you should **do your own independent analysis** to determine whether or not your use will be Fair.

A note on steroid side effects....

| | |
|---------------------------------------|--|
| Dermatologic and soft tissue | Skin thinning and purpura, easy bruising, Cushingoid appearance, alopecia, acne, hirsutism, striae, hypertrichosis |
| Ocular | Posterior subcapsular cataract, elevated intraocular pressure/glaucoma, exophthalmos |
| Cardiovascular | Hypertension, dyslipidemia, premature atherosclerotic disease, arrhythmias with pulse infusions |
| Gastrointestinal | Gastritis, peptic ulcer disease, pancreatitis, steatohepatitis, visceral perforation |
| Renal | Hypokalemia, fluid volume shifts |
| Genitourinary and reproductive | Amenorrhea/infertility, intrauterine growth retardation |
| Bone/muscle | Osteoporosis, avascular necrosis, myopathy |
| Neuropsychiatric | Euphoria, dysphoria/depression, insomnia/akathisia, psychosis, pseudo tumor cerebri |
| Endocrine | Diabetes, HPA axis insufficiency |
| ID | Heightened risk of typical infections, opportunistic infections, herpes zoster |



Additional Source Information

for more information see: <http://open.umich.edu/wiki/CitationPolicy>

Slide 3: Seetha Monrad

Slide 4: Source Undetermined