

Project: Ghana Emergency Medicine Collaborative

Document Title: Resuscitation

Author(s): Doug Vogel & Zach Sturges (University of Utah) 2012

License: *Unless otherwise noted, this material is made available under the terms of the **Creative Commons Attribution Share Alike-3.0 License**:*
<http://creativecommons.org/licenses/by-sa/3.0/>

We have reviewed this material in accordance with U.S. Copyright Law **and have tried to maximize your ability to use, share, and adapt it.** These lectures have been modified in the process of making a publicly shareable version. The citation key on the following slide provides information about how you may share and adapt this material.

Copyright holders of content included in this material should contact **open.michigan@umich.edu** with any questions, corrections, or clarification regarding the use of content.

For more information about **how to cite** these materials visit <http://open.umich.edu/privacy-and-terms-use>.

Any **medical information** in this material is intended to inform and educate and is **not a tool for self-diagnosis** or a replacement for medical evaluation, advice, diagnosis or treatment by a healthcare professional. Please speak to your physician if you have questions about your medical condition.

Viewer discretion is advised: Some medical content is graphic and may not be suitable for all viewers.

for more information see: <http://open.umich.edu/wiki/AttributionPolicy>

Use + Share + Adapt

{ Content the copyright holder, author, or law permits you to use, share and adapt. }



Public Domain – Government: Works that are produced by the U.S. Government. (17 USC § 105)



Public Domain – Expired: Works that are no longer protected due to an expired copyright term.



Public Domain – Self Dedicated: Works that a copyright holder has dedicated to the public domain.



Creative Commons – Zero Waiver



Creative Commons – Attribution License



Creative Commons – Attribution Share Alike License



Creative Commons – Attribution Noncommercial License



Creative Commons – Attribution Noncommercial Share Alike License



GNU – Free Documentation License

Make Your Own Assessment

{ Content Open.Michigan believes can be used, shared, and adapted because it is ineligible for copyright. }



Public Domain – Ineligible: Works that are ineligible for copyright protection in the U.S. (17 USC § 102(b)) *laws in your jurisdiction may differ

{ Content Open.Michigan has used under a Fair Use determination. }



Fair Use: Use of works that is determined to be Fair consistent with the U.S. Copyright Act. (17 USC § 107) *laws in your jurisdiction may differ

Our determination **DOES NOT** mean that all uses of this 3rd-party content are Fair Uses and we **DO NOT** guarantee that your use of the content is Fair.

To use this content you should **do your own independent analysis** to determine whether or not your use will be Fair.

Resuscitation



Rama, [Wikimedia Commons](#)


Doug Vogel & Zach Sturges
Emergency Medicine

PGY-2 sitting closest to the
back door

You may consult:
One PGY-2

A stylized, jagged mountain range silhouette in a darker teal color, located in the bottom right corner of the slide.

Action Page

- ◆ Opening Statement
 - ◆ Results
 - ◆ ABCDE's
 - ◆ Critical Actions
 - ◆ HPI
 - ◆ Review
 - ◆ Background
 - ◆ Physical
- 
- A stylized, layered mountain range graphic in shades of teal and blue, located in the bottom right corner of the slide.

Presentation

- ◆ 52 year-old

- ◆ CC:

- ◆ Vitals:

T:, P:, RR:, BP:



ABCs

- ◆ General:

- ◆ A:

- ◆ B:

- ◆ C:

- ◆ D:

- ◆ E:

A stylized, layered mountain range in shades of teal and blue, located in the bottom right corner of the slide.

ABCs

- ◆ General: Diaphoretic and nervous

- ◆ A:

- ◆ B:

- ◆ C:

- ◆ D:

- ◆ E:

ABCs

- ◆ General: Diaphoretic and nervous
- ◆ A: Speaking in sentences
- ◆ B:
- ◆ C:
- ◆ D:
- ◆ E:

ABCs

- ◆ General: Diaphoretic and nervous
- ◆ A: Speaking in sentences
- ◆ B: Symmetric, full breaths, RR 24
- ◆ C:
- ◆ D:
- ◆ E:

ABCs

- ◆ General: Diaphoretic and nervous
- ◆ A: Speaking in sentences
- ◆ B: Symmetric, full breaths, RR 24
- ◆ C: Tachy, good pulses and skin tone
- ◆ D:
- ◆ E:

A stylized, layered mountain range graphic in shades of teal and blue, located at the bottom right of the slide. The mountains are depicted with jagged peaks and are partially obscured by the '***' text and its underline.

ABCs

- ◆ General: Diaphoretic and nervous
- ◆ A: Speaking in sentences
- ◆ B: Symmetric, full breaths, RR 24
- ◆ C: Tachy, good pulses and skin tone
- ◆ D: GCS 15, no disability noted
- ◆ E:

A stylized, layered mountain range graphic in shades of teal and blue, located in the bottom right corner of the slide.

ABCs

- ◆ General: Diaphoretic and nervous
- ◆ A: Speaking in sentences
- ◆ B: Symmetric, full breaths, RR 24
- ◆ C: Tachy, good pulses and skin tone
- ◆ D: GCS 15, no disability noted
- ◆ E: Now in gown, glass pipe in pocket

History

A stylized, layered mountain range in shades of teal and blue, located at the bottom right of the slide. The mountains are composed of several jagged peaks and ridges, creating a sense of depth through overlapping layers.

History





Background History

Background History

- ◆ PMH:
- ◆ Meds: Ø
- ◆ All: Ø
- ◆ SH: TOB
 - EtOH: socially
 - Drugs:
- ◆ FH:
- ◆ ROS: who cares



Physical

Physical

- ◆ VS: 120, 24, 176/84
- ◆ Gen: anxious
- ◆ HEENT: nl
- ◆ Neck: no JVD
- ◆ Pulm: CTAB
- ◆ CV: Tachy, o/w nl
- ◆ Abd: nl
- ◆ M/S: nl
- ◆ Skin: diaphoretic
- ◆ Neuro: nl

A stylized, layered mountain range graphic in shades of teal and blue, located in the bottom right corner of the slide. The mountains are depicted with vertical ridges and a jagged silhouette.

Results

LABS

- ◆ CBC / Diff
- ◆ BMP
- ◆ LFTs
- ◆ Amylase/Lipase
- ◆ Coags
- ◆ Enzymes
- ◆ Type S or C
- ◆ U/A
- ◆ Pregnancy
- ◆ Tox Screens
- ◆ Miscellaneous

IMAGES

- ◆ Radiographs
- ◆ CT Scans
- ◆ MRI
- ◆ Ultrasound

Tracings

- ◆ EKG

LABS

- ◆ CBC:
- ◆ Na:, K:,
Cl:, CO2:
- ◆ BUN/CR:
- ◆ Glu:
- ◆ All others pending

Results ***



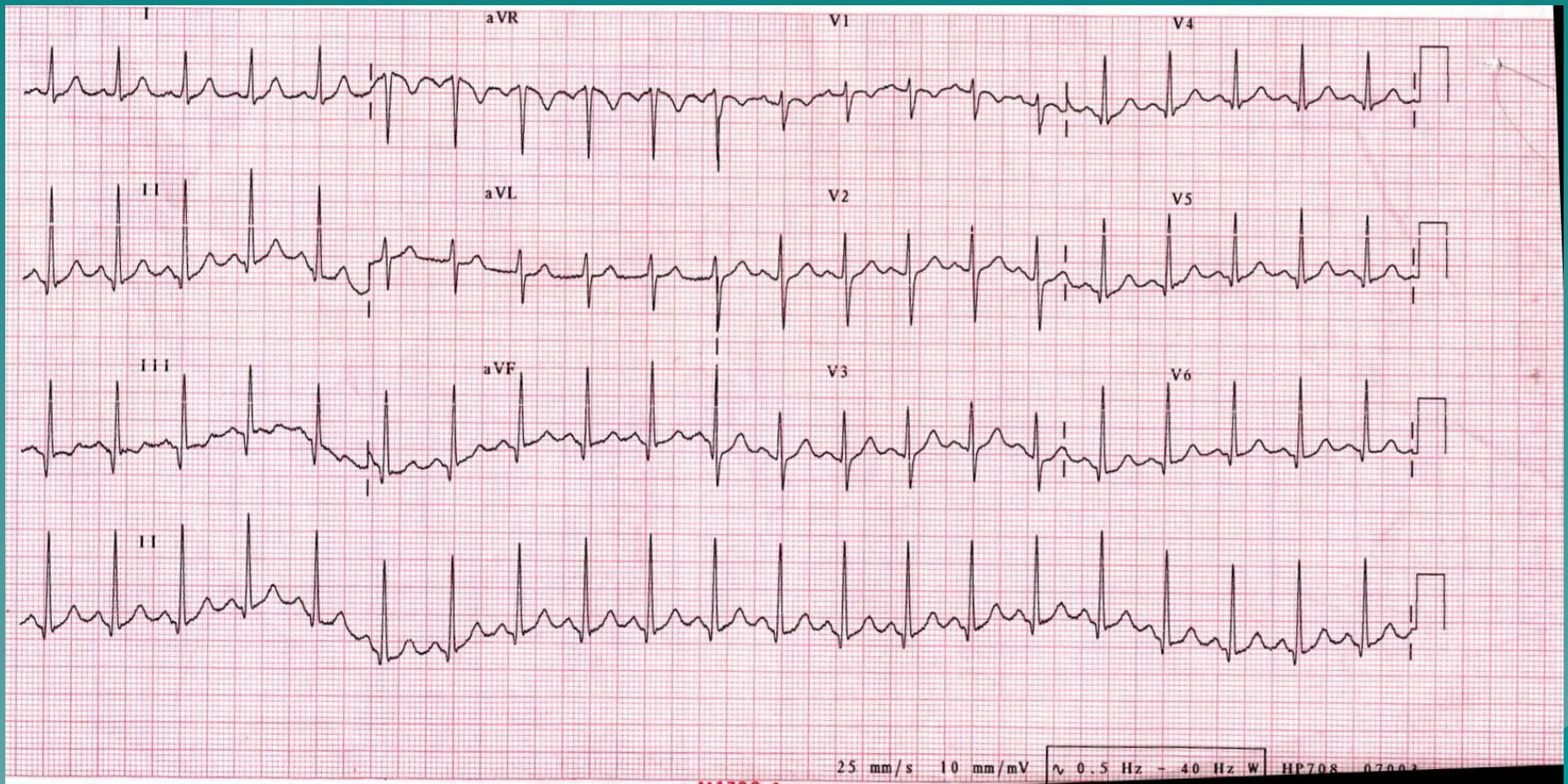
Results

EKG BANK

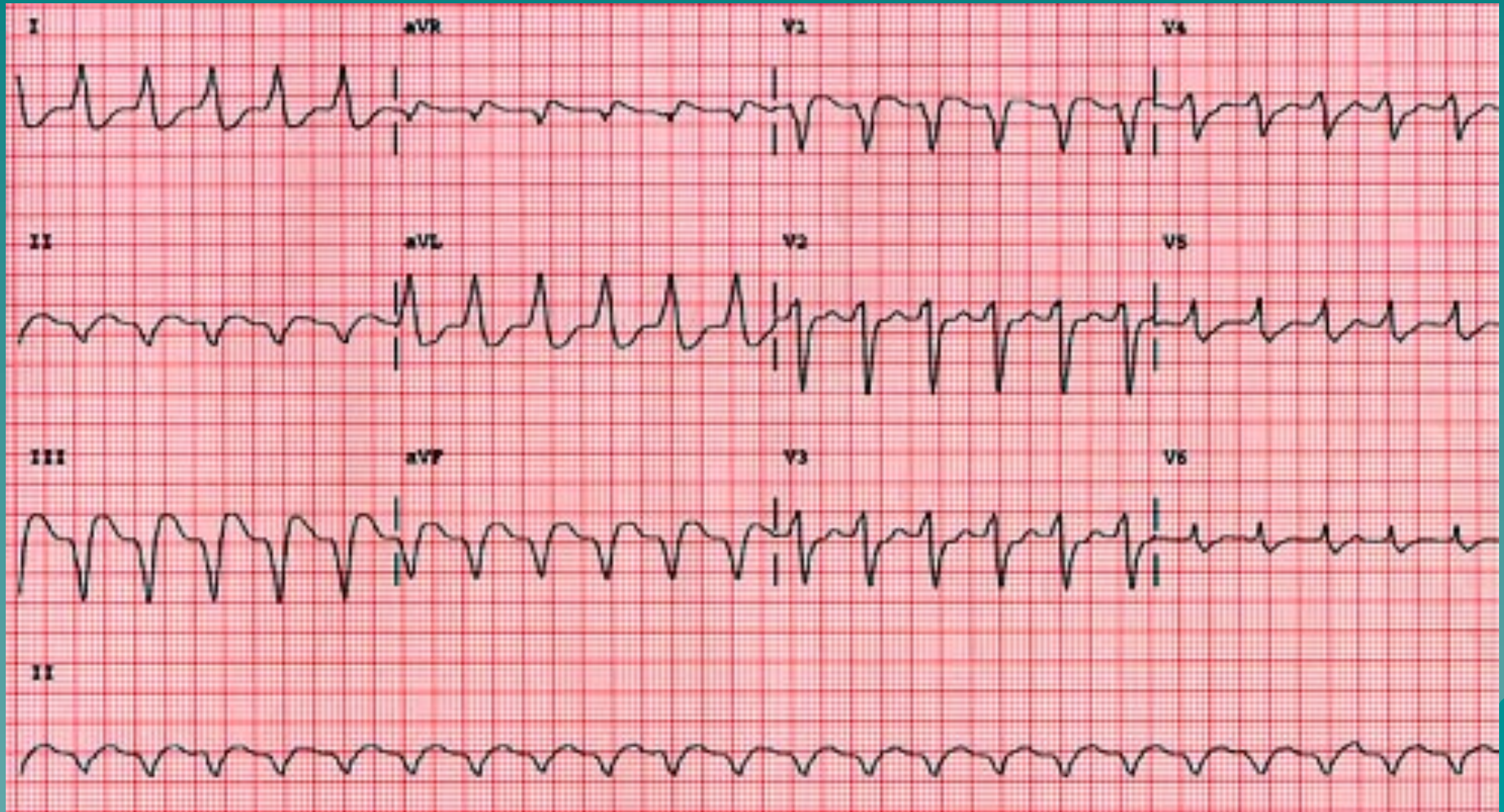
- ◆ EKG Initial
- ◆ EKG #2
- ◆ EKG #3
- ◆ EKG #4
- ◆ EKG #5

- ◆ Rhythm Strip 1
- ◆ Rhythm Strip 2
- ◆ Rhythm Strip 3

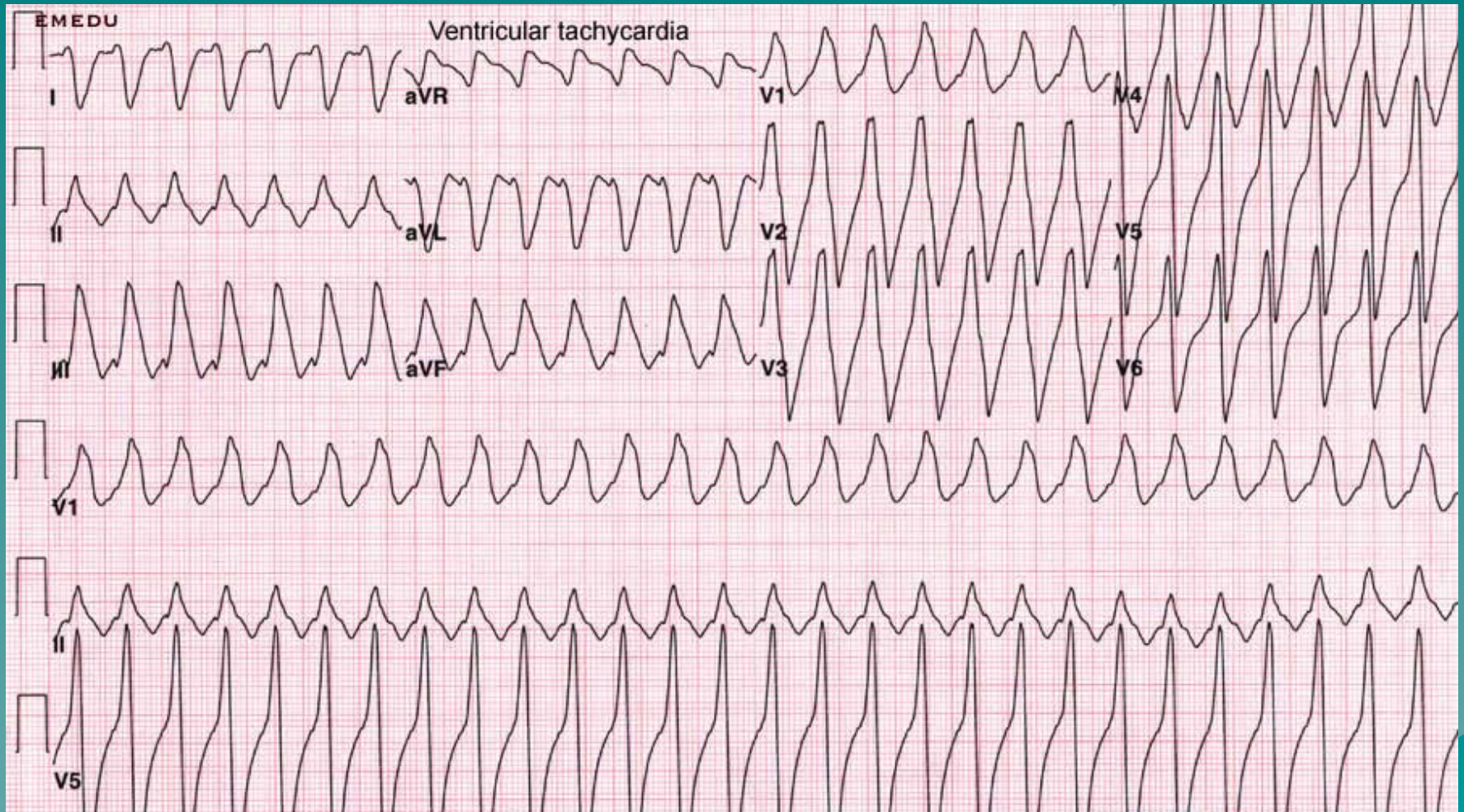
EKG (Initial)



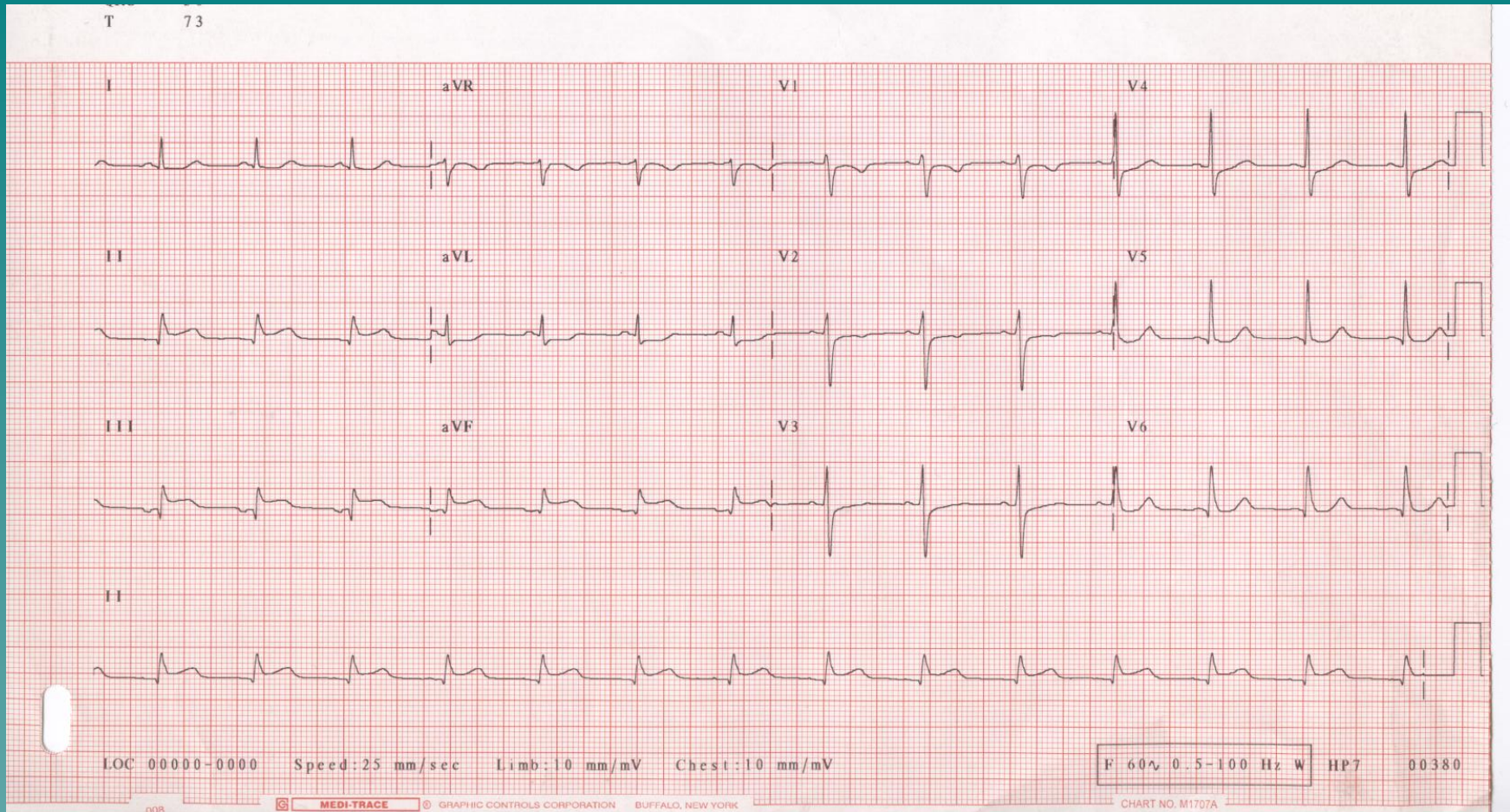
EKG #2



EKG #3



EKG #4

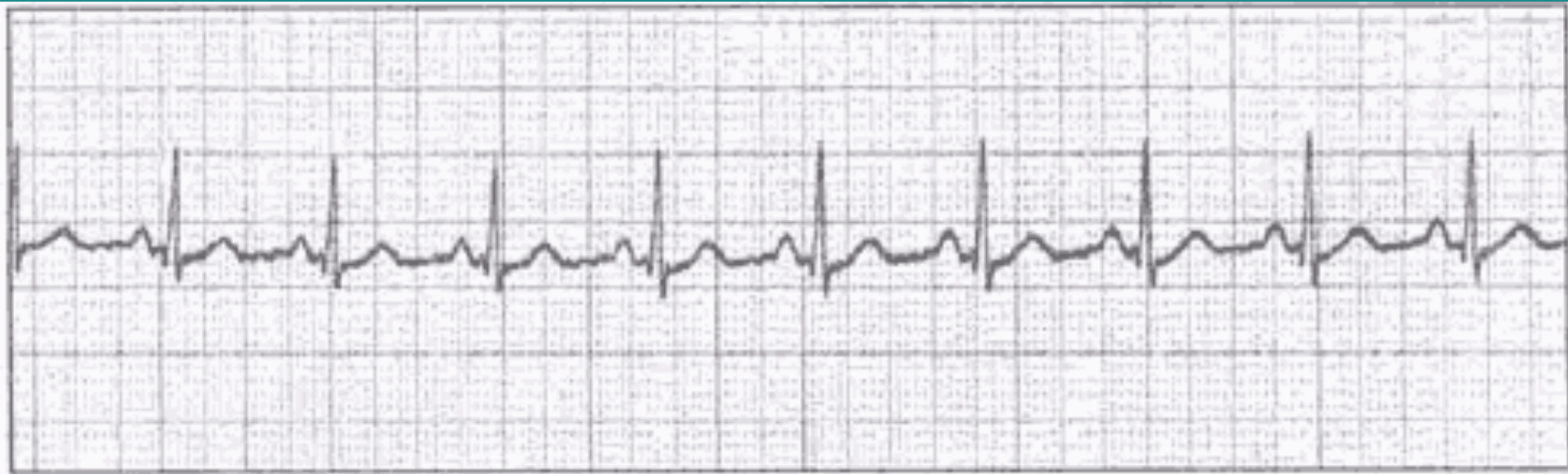


PD-INEL

Source Undetermined

EKG

Rhythm Strip 1



PD-INEL Source Undetermined

◆ EKG

◆ ***

Rhythm Strip 2

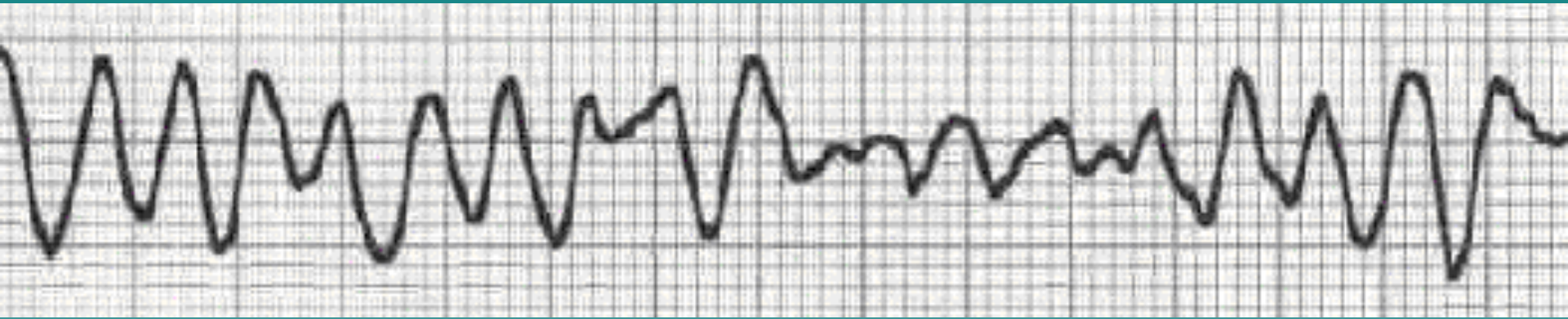


PD-INEL

Source Undetermined

◆ EKG
◆ ****

Rhythm Strip 3



PD-INEL

Source Undetermined

◆ EKG
◆ ***

Critical Actions

- ◆ Recognize transition to unstable VT
- ◆ Shock
- ◆ Establish airway
- ◆ Appropriate drugs
- ◆ Admit cardiology / CCU

A decorative graphic of a mountain range in shades of teal and blue, located in the bottom right corner of the slide. The mountains are stylized with jagged peaks and ridges.