

**Author(s):** Gerald Abrams, M.D., Stephen Ramsburgh, M.D., 2009

**License:** Unless otherwise noted, this material is made available under the terms of the **Creative Commons Attribution-Non-commercial-Share Alike 3.0 License**:  
<http://creativecommons.org/licenses/by-nc-sa/3.0/>

**We have reviewed this material** in accordance with U.S. Copyright Law **and have tried to maximize your ability to use, share, and adapt it.** The citation key on the following slide provides information about how you may share and adapt this material.

Copyright holders of content included in this material should contact [open.michigan@umich.edu](mailto:open.michigan@umich.edu) with any questions, corrections, or clarification regarding the use of content.

For more information about **how to cite** these materials visit <http://open.umich.edu/education/about/terms-of-use>.

Any **medical information** in this material is intended to inform and educate and is **not a tool for self-diagnosis** or a replacement for medical evaluation, advice, diagnosis or treatment by a healthcare professional. Please speak to your physician if you have questions about your medical condition.

**Viewer discretion is advised:** Some medical content is graphic and may not be suitable for all viewers.

# Citation Key

for more information see: <http://open.umich.edu/wiki/CitationPolicy>

## Use + Share + Adapt

{ Content the copyright holder, author, or law permits you to use, share and adapt. }



**Public Domain – Government:** Works that are produced by the U.S. Government. (USC 17 § 105)



**Public Domain – Expired:** Works that are no longer protected due to an expired copyright term.



**Public Domain – Self Dedicated:** Works that a copyright holder has dedicated to the public domain.



**Creative Commons – Zero Waiver**



**Creative Commons – Attribution License**



**Creative Commons – Attribution Share Alike License**



**Creative Commons – Attribution Noncommercial License**



**Creative Commons – Attribution Noncommercial Share Alike License**



**GNU – Free Documentation License**

## Make Your Own Assessment

{ Content Open.Michigan believes can be used, shared, and adapted because it is ineligible for copyright. }



**Public Domain – Ineligible:** Works that are ineligible for copyright protection in the U.S. (USC 17 § 102(b)) \*laws in your jurisdiction may differ

{ Content Open.Michigan has used under a Fair Use determination. }



**Fair Use:** Use of works that is determined to be Fair consistent with the U.S. Copyright Act. (USC 17 § 107) \*laws in your jurisdiction may differ

Our determination **DOES NOT** mean that all uses of this 3rd-party content are Fair Uses and we **DO NOT** guarantee that your use of the content is Fair.

To use this content you should **do your own independent analysis** to determine whether or not your use will be Fair.

# Endocrine Lab 2

M2 – Endocrine Sequence

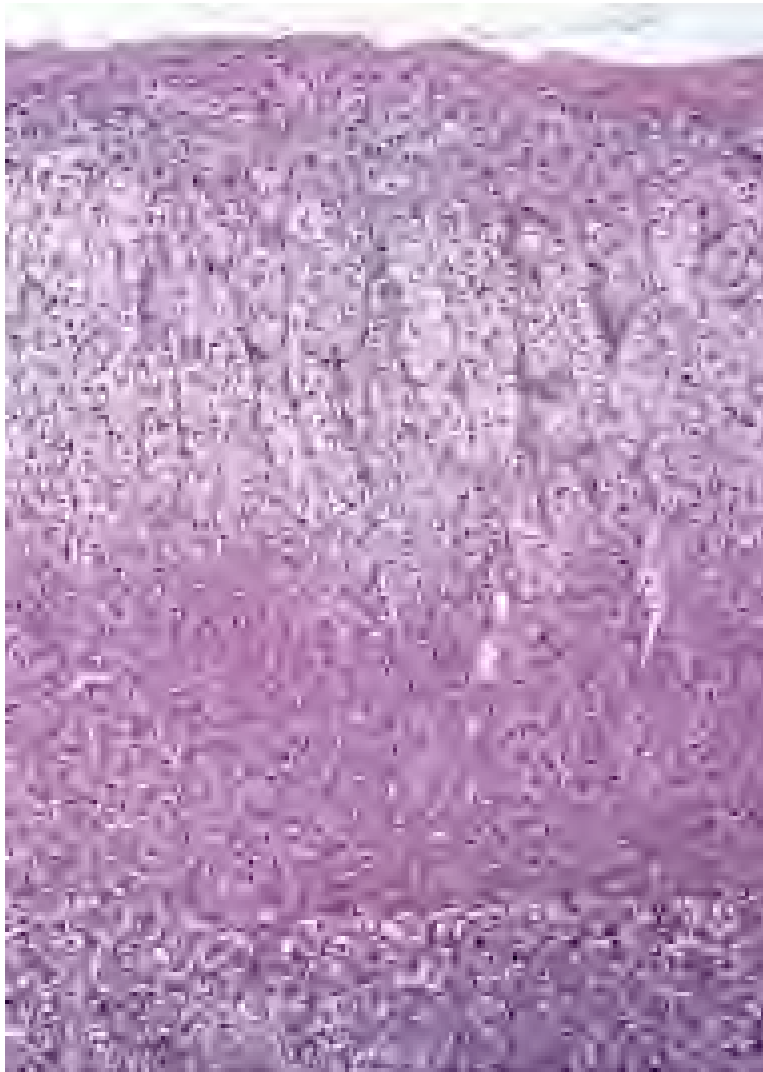
G. Abrams, S. Ramsburg

# **Addison' s Disease**

# Normal Adrenal Gland



# Normal Adrenal Cortex



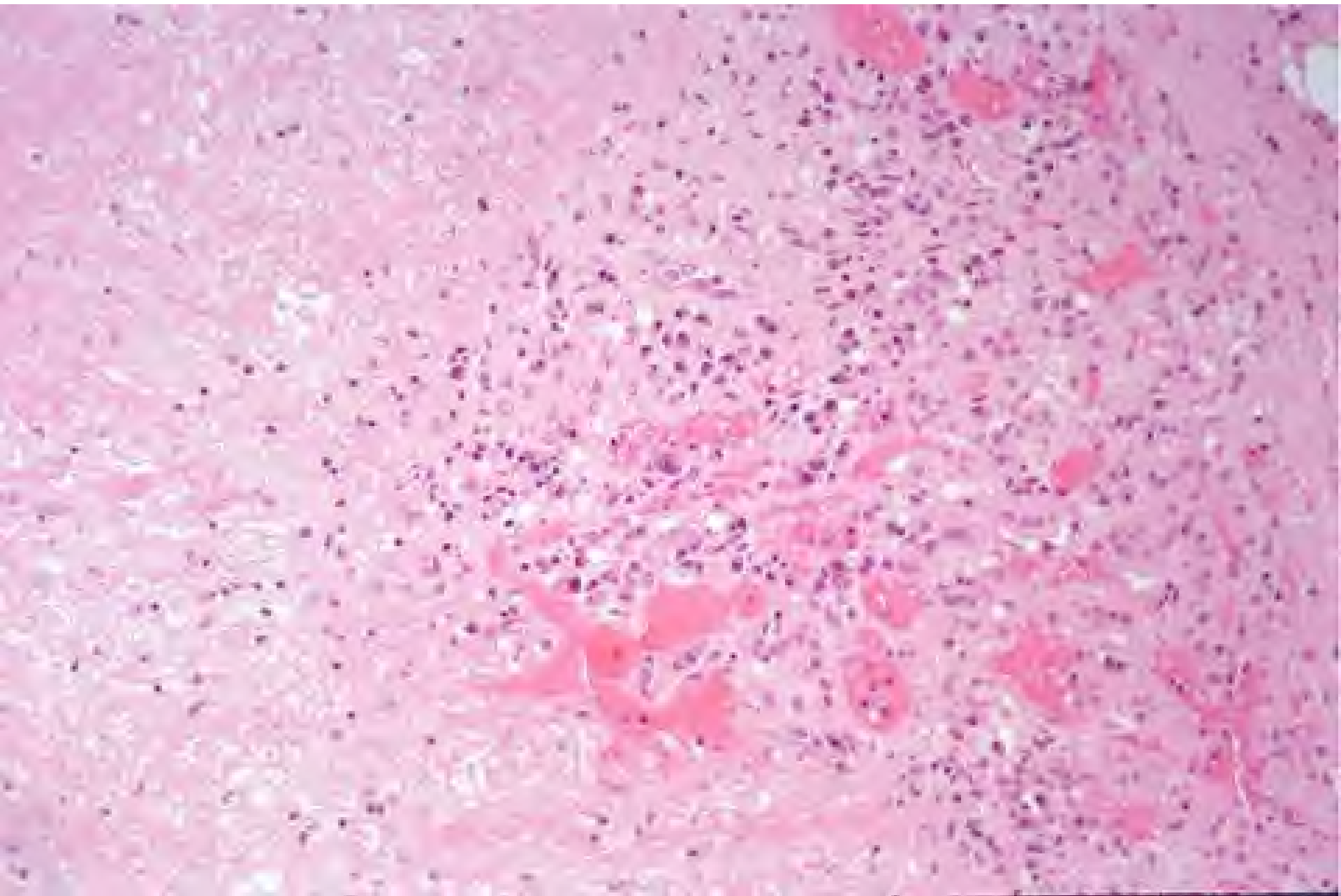
glomerulosa  
(aldosterone)

fasciculata  
(Cushing)

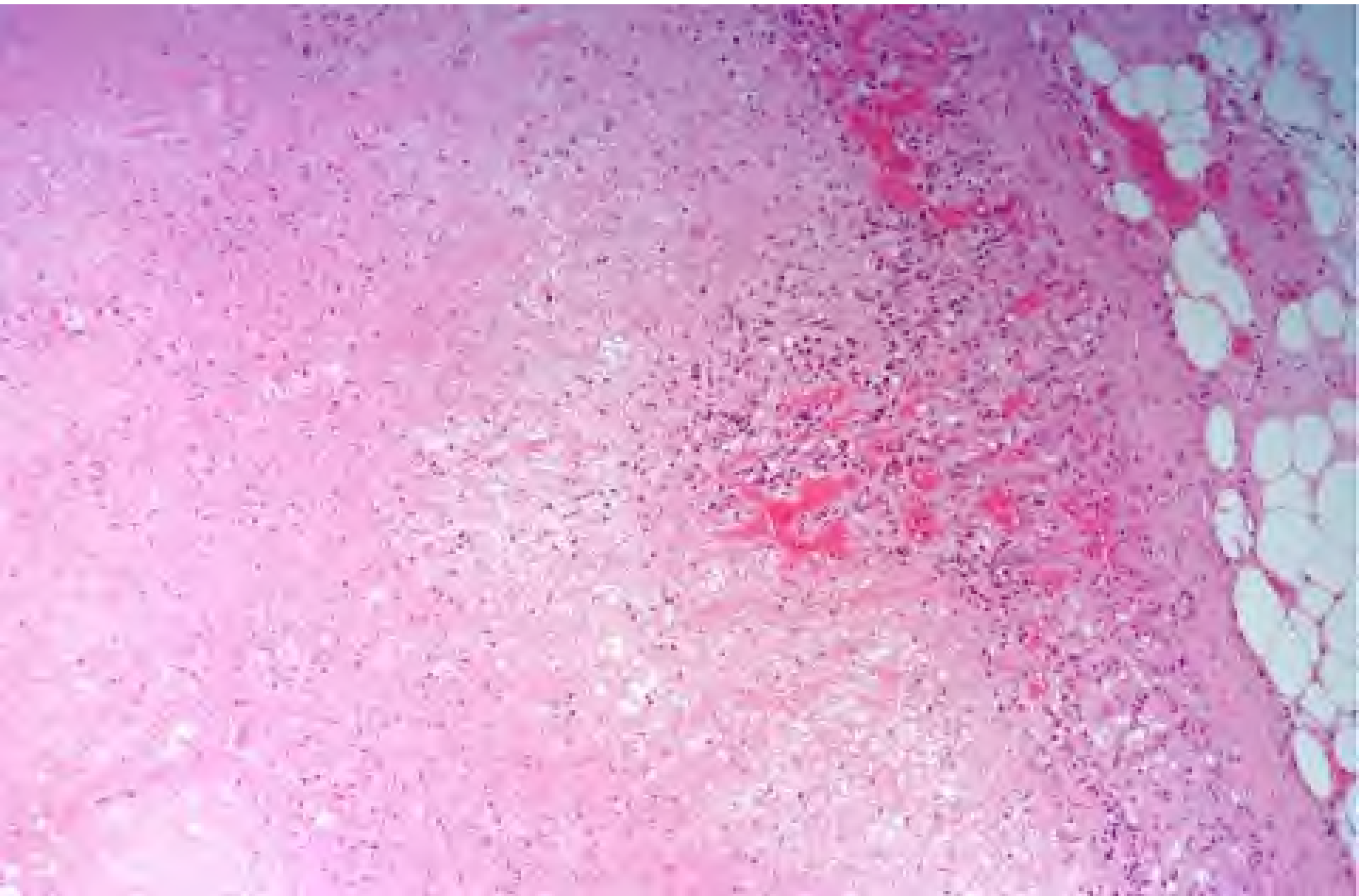
reticularis  
(adrenogenital syndrome)

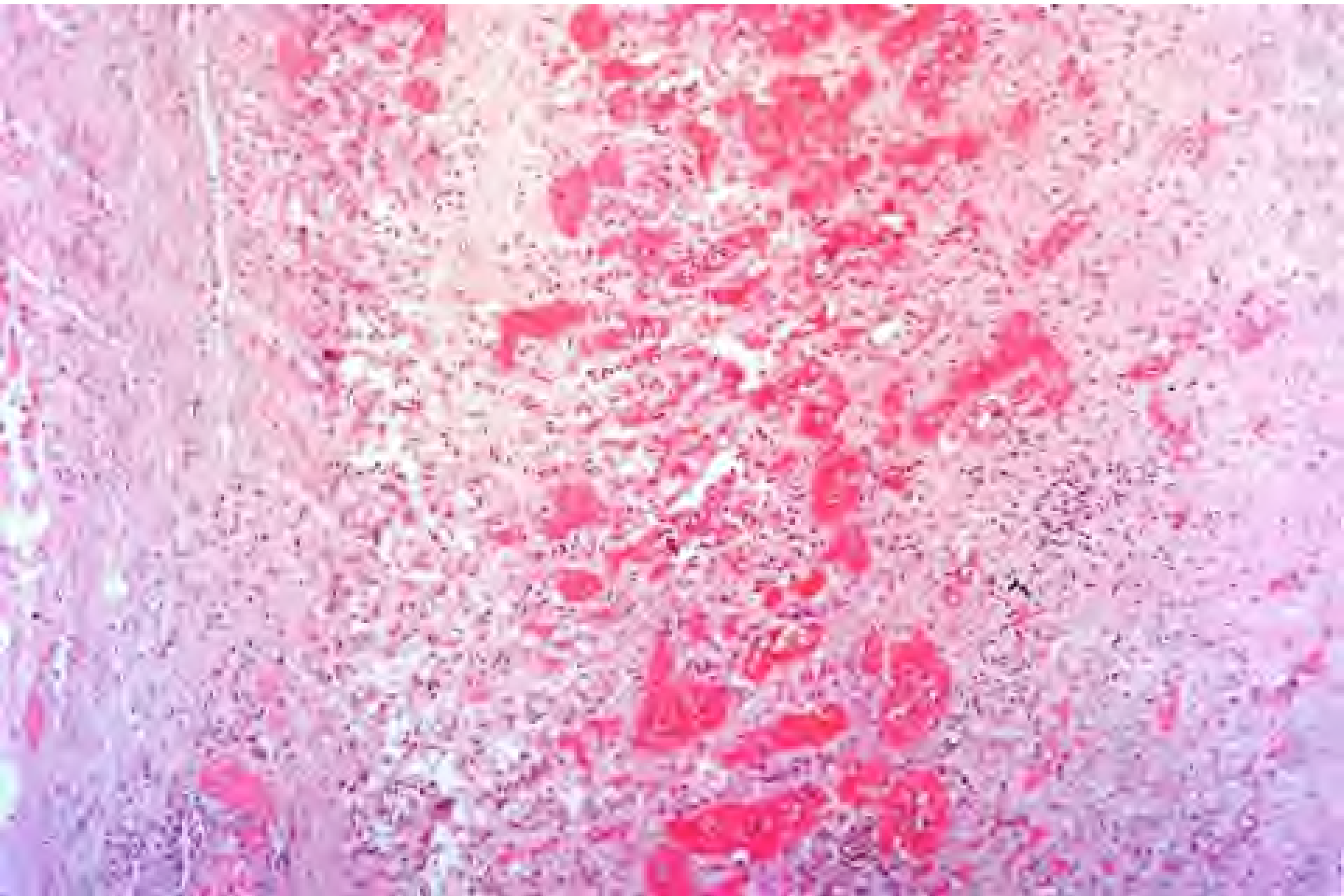
medulla

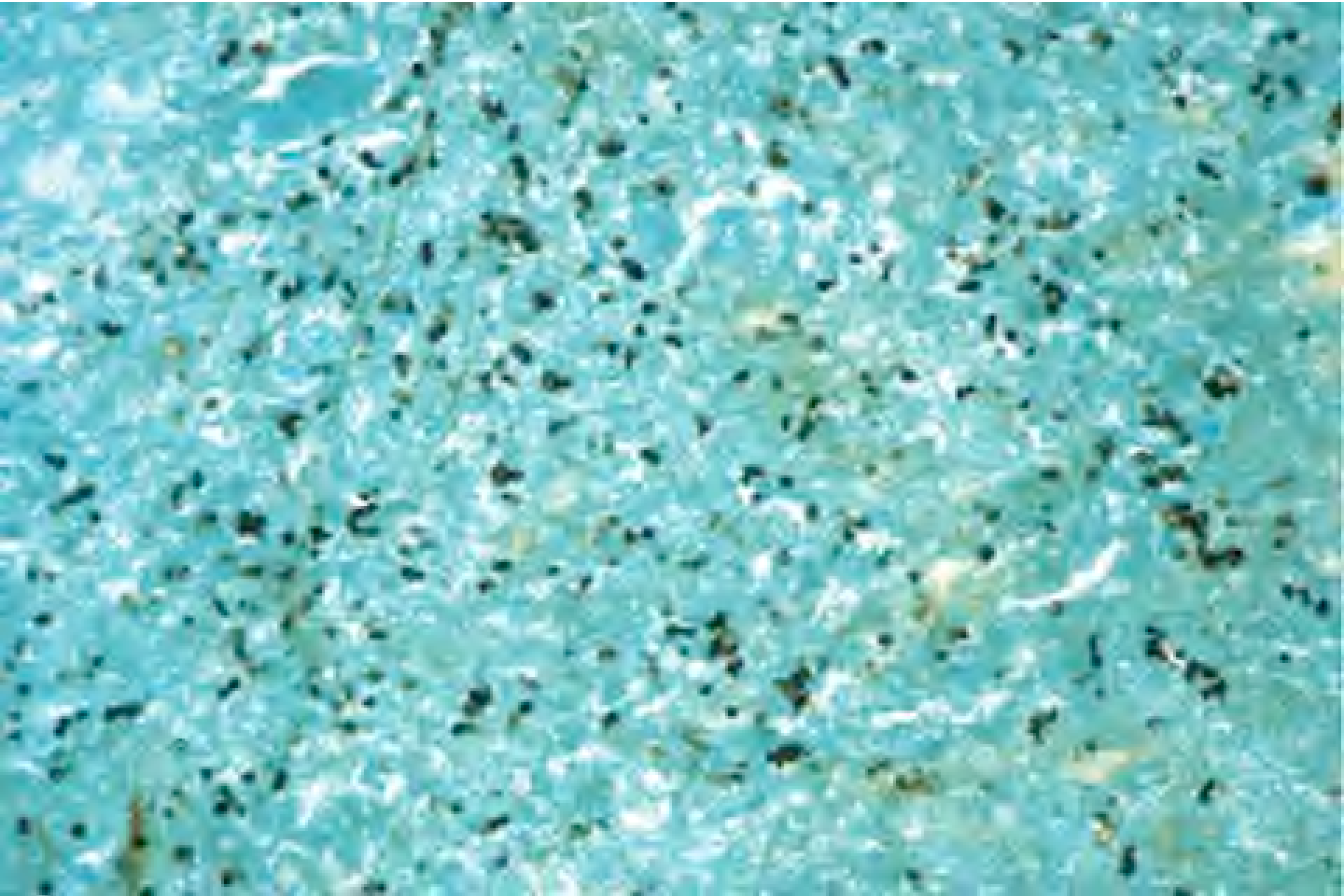








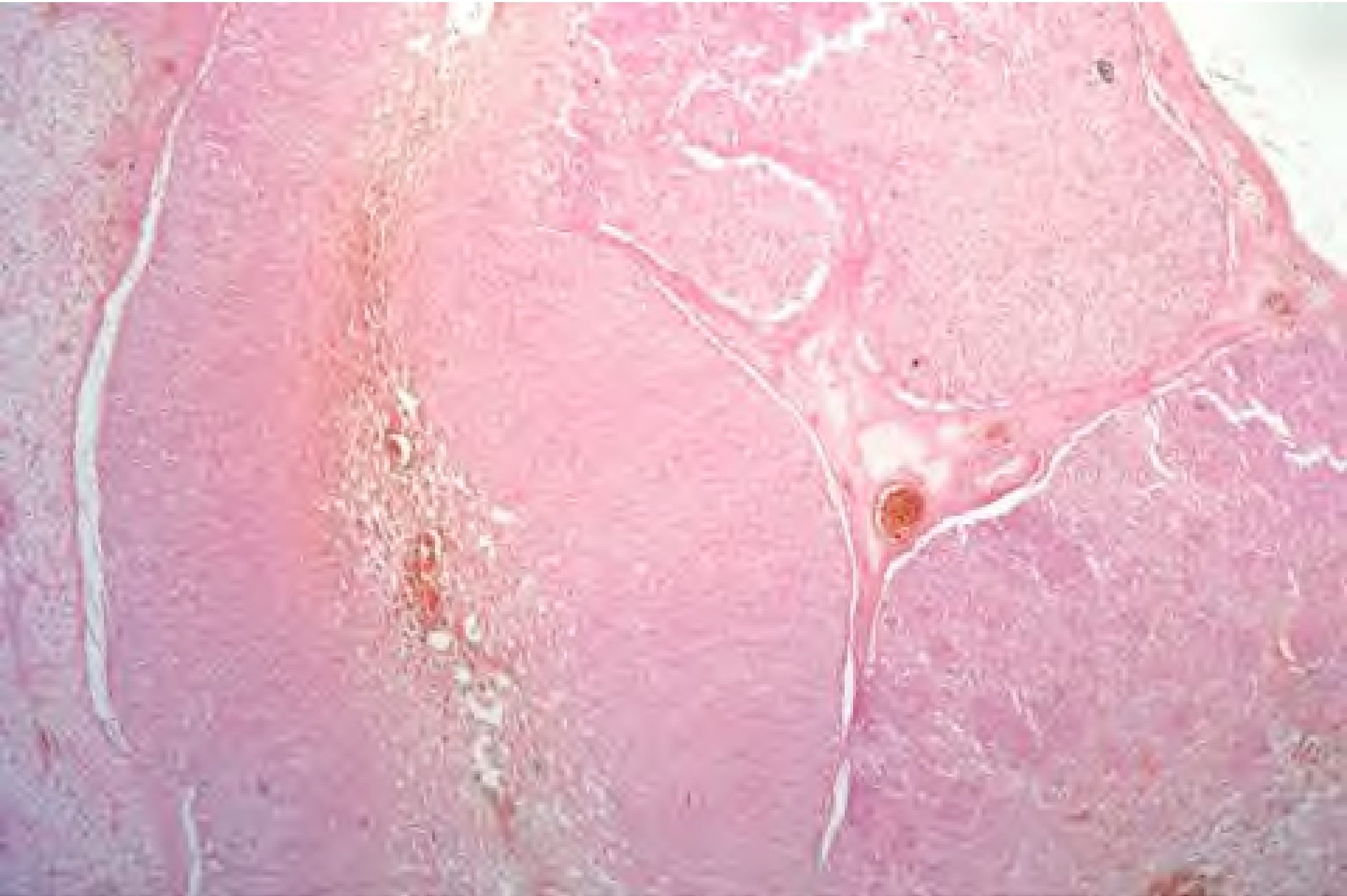


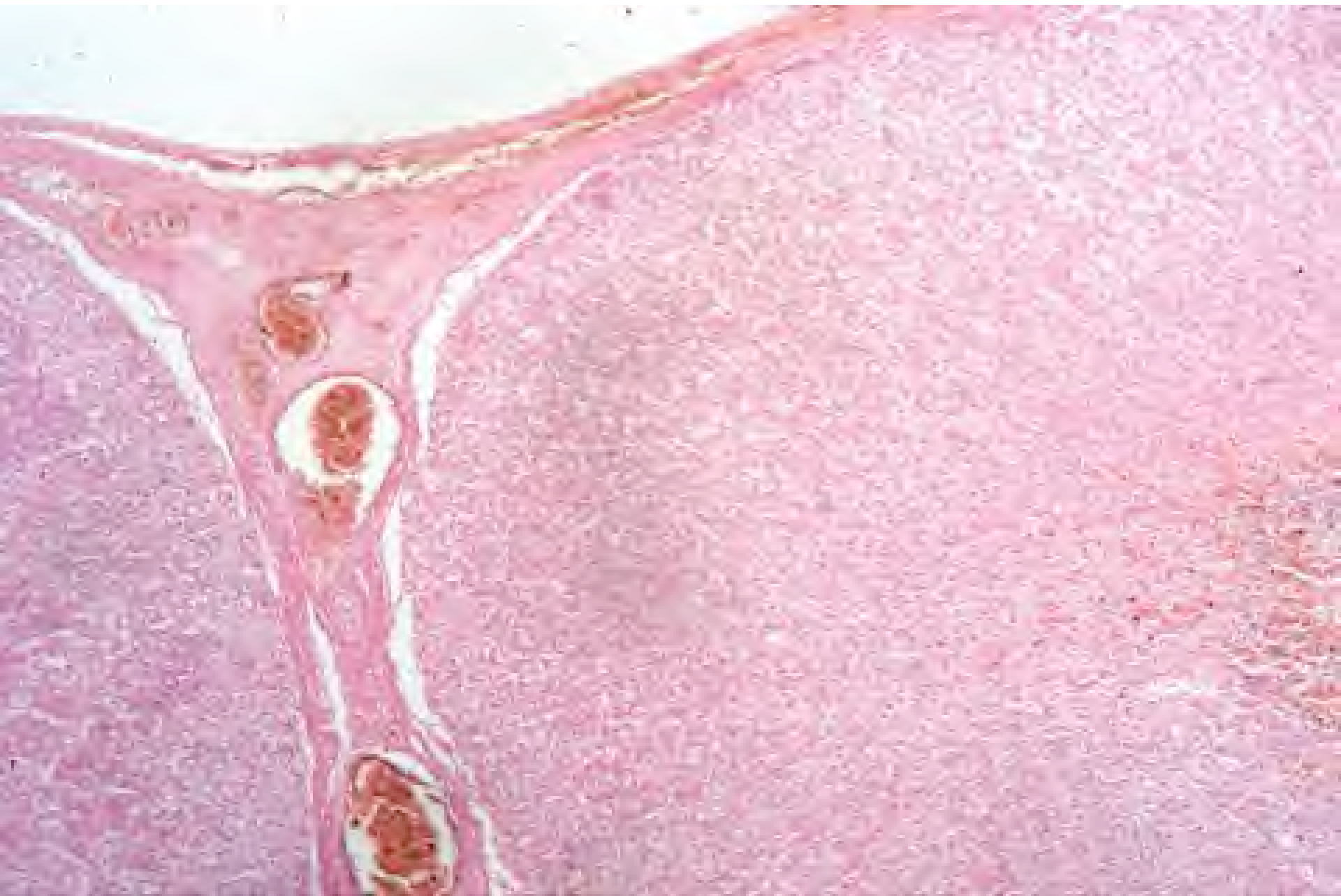


# **Adrenal Cortical Hyperplasia**





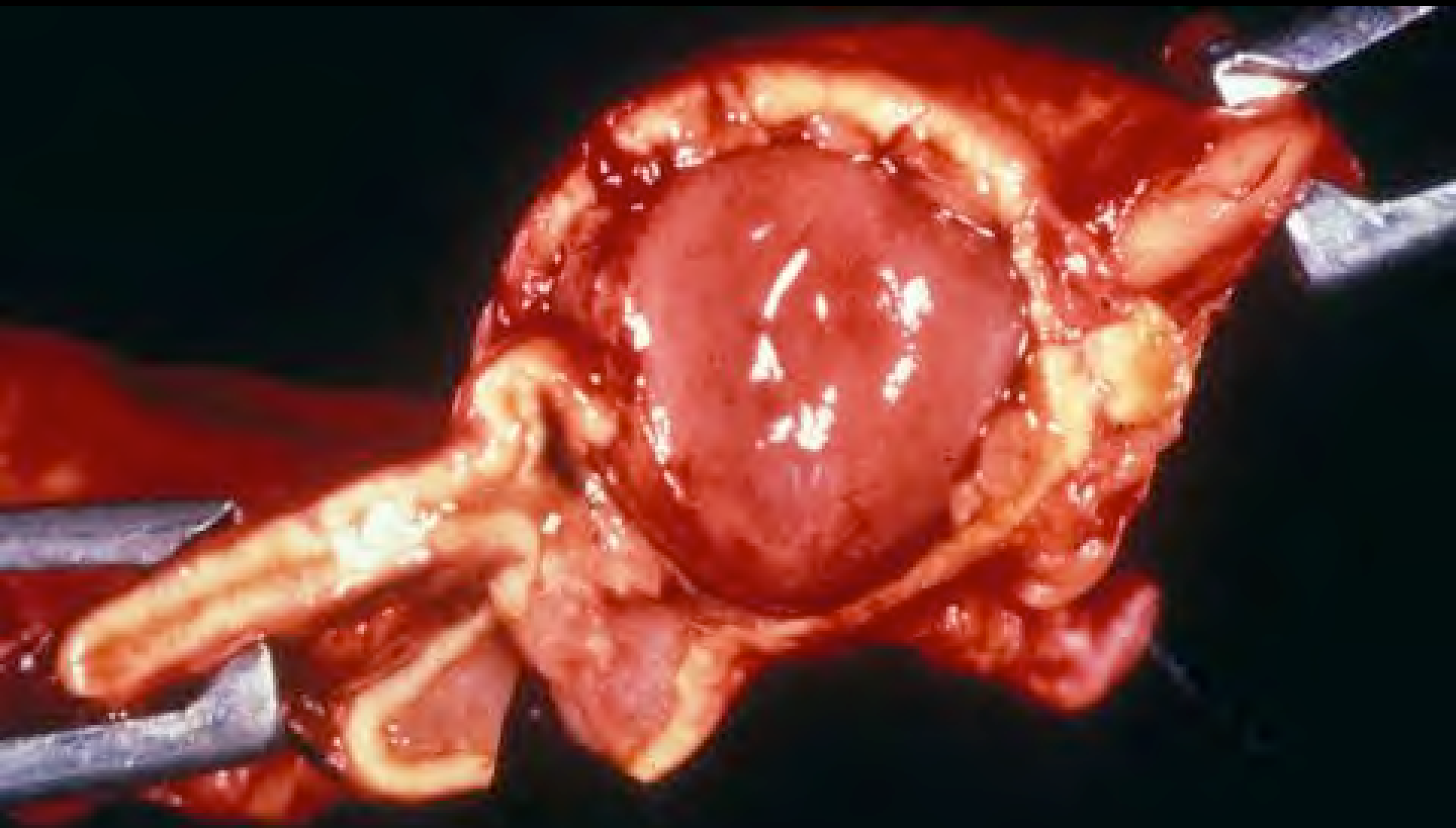


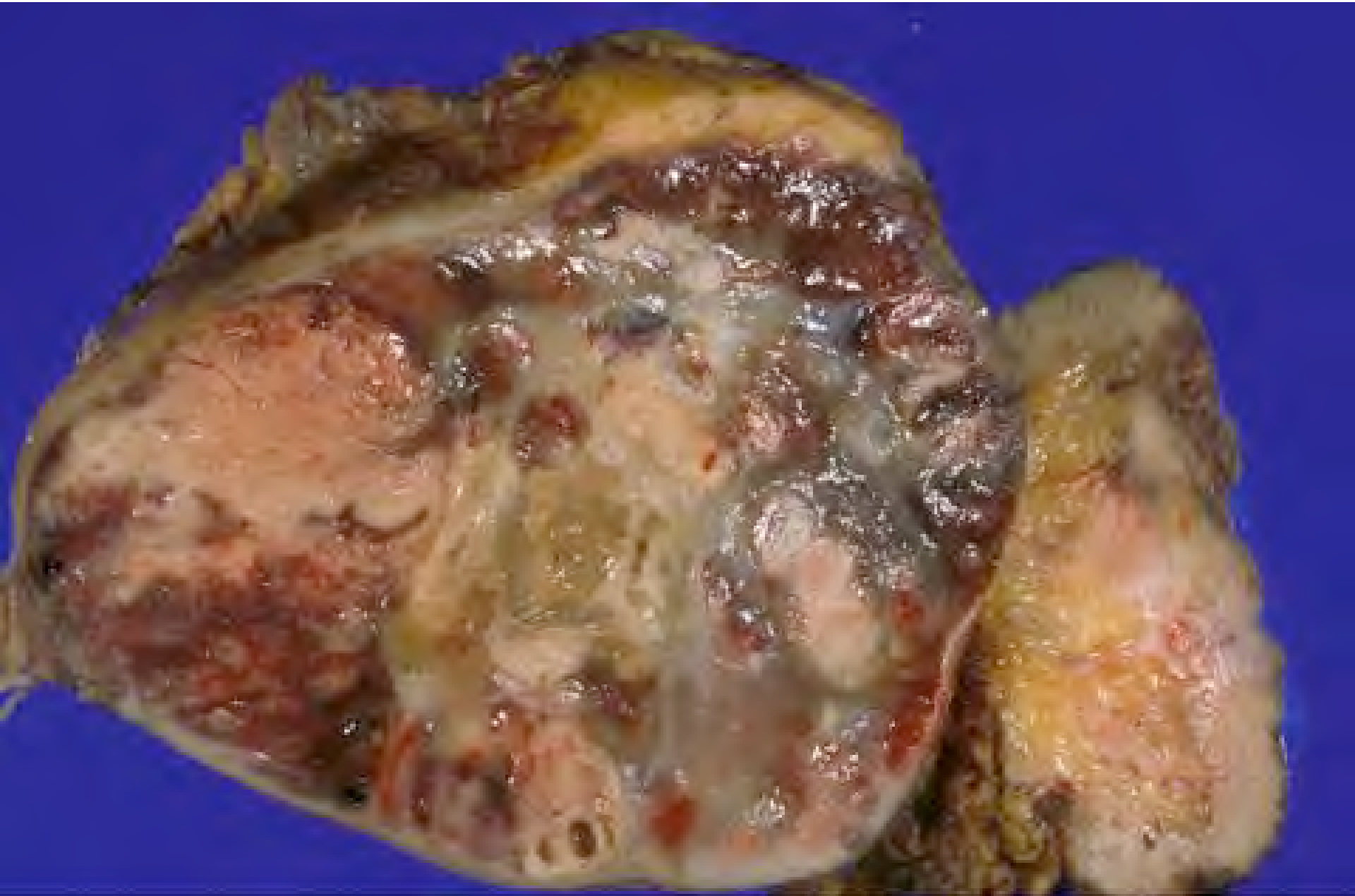


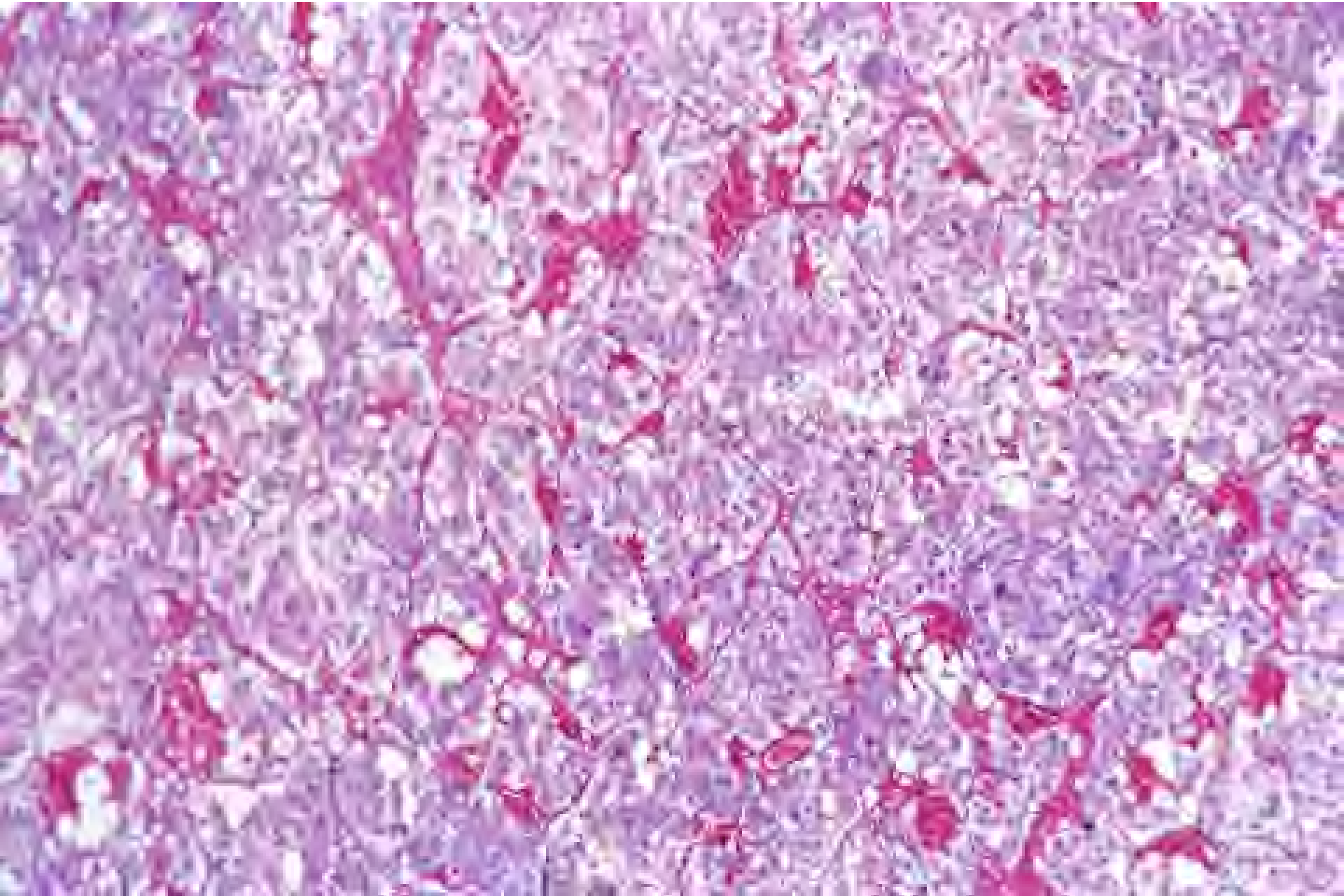


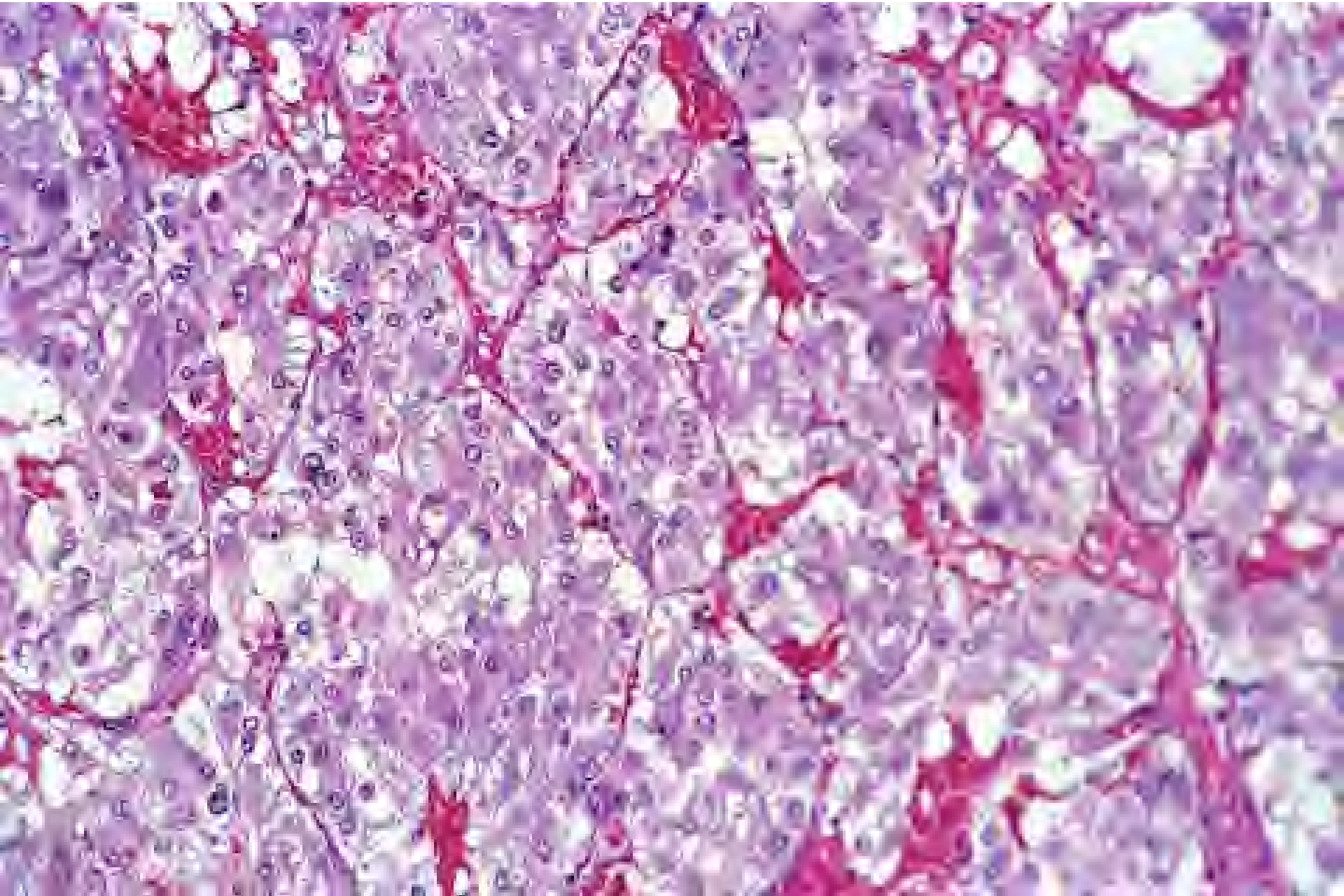


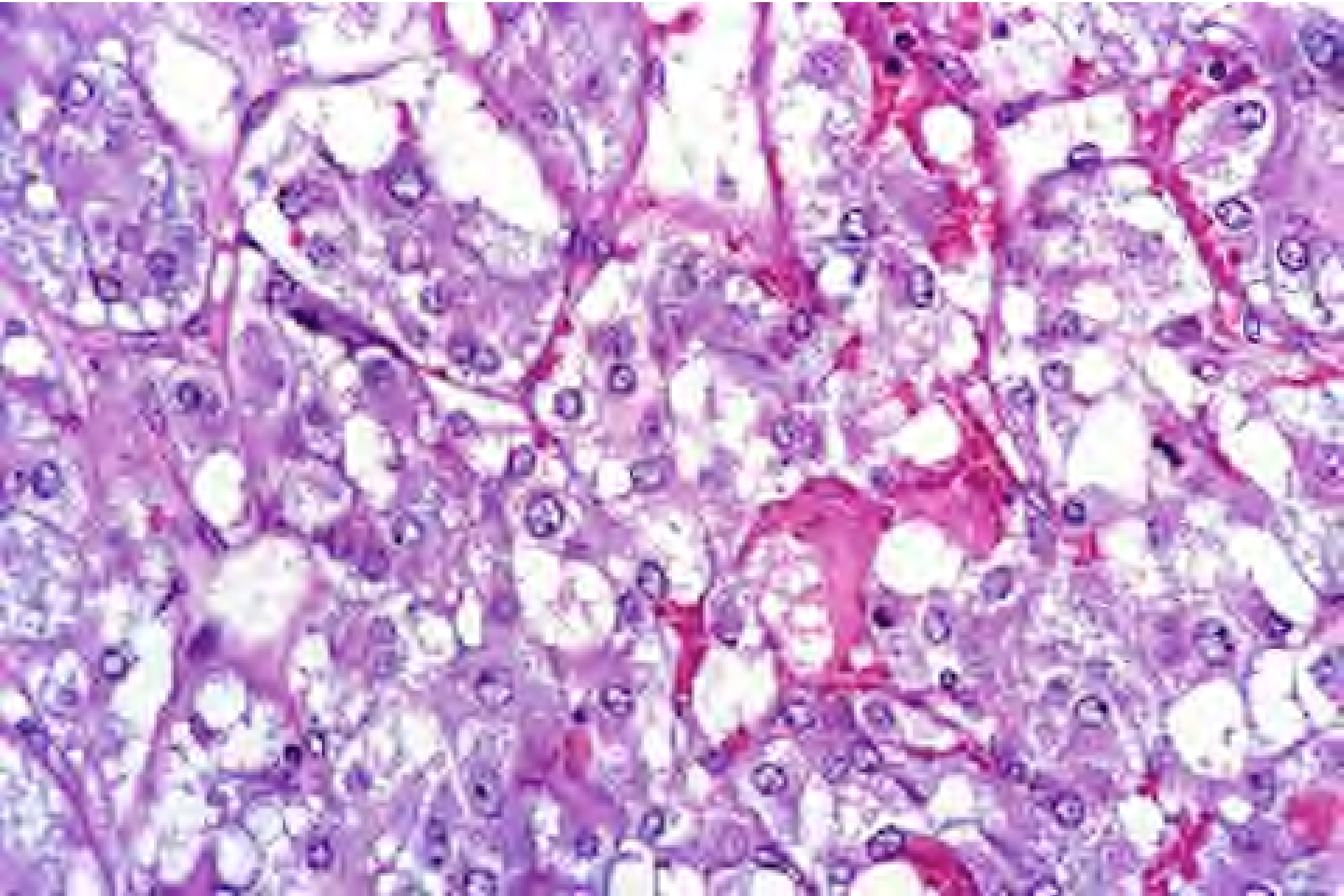
# **Pheochromocytoma**





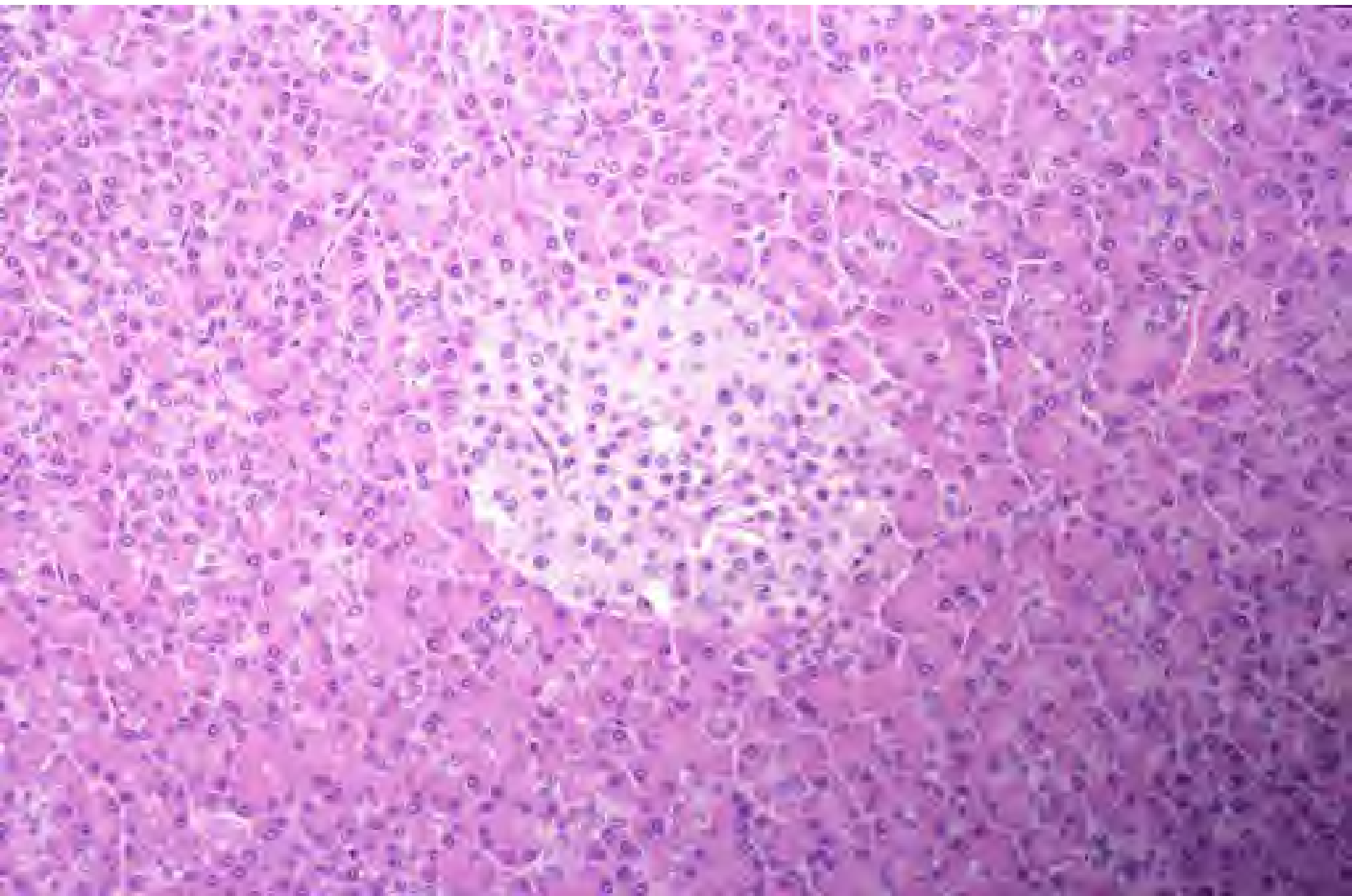




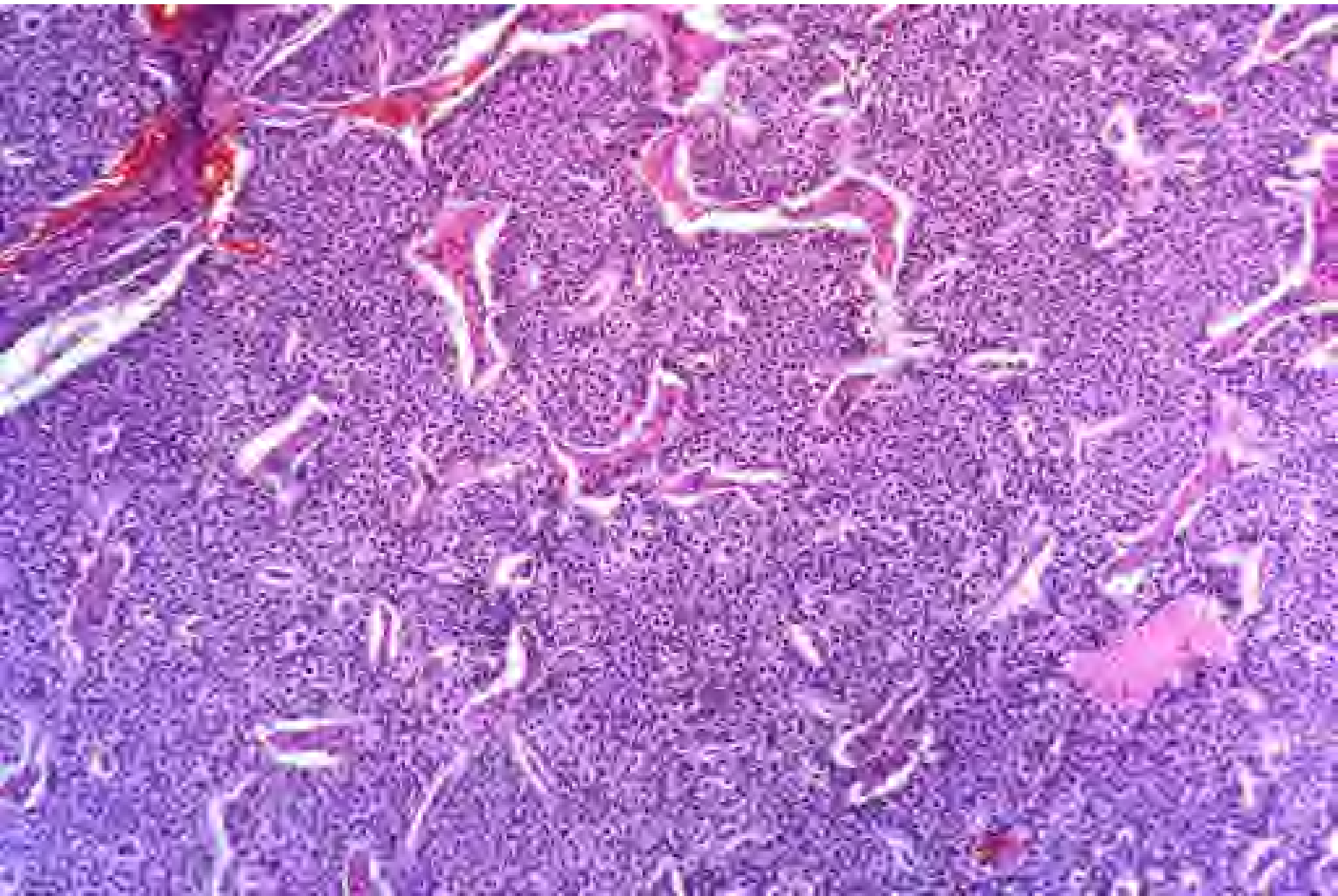


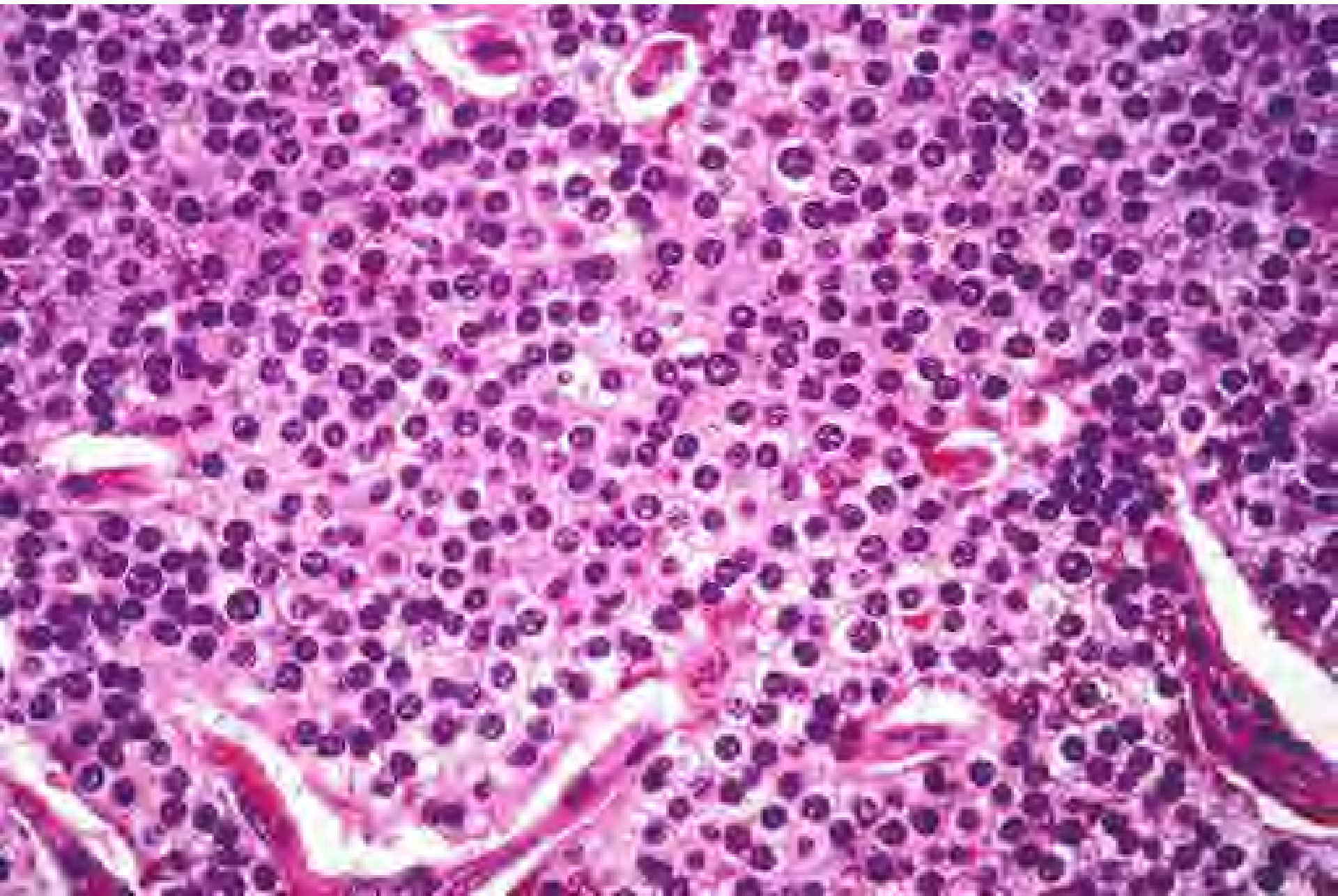
# **Islet Cell Tumor - Pancreas**

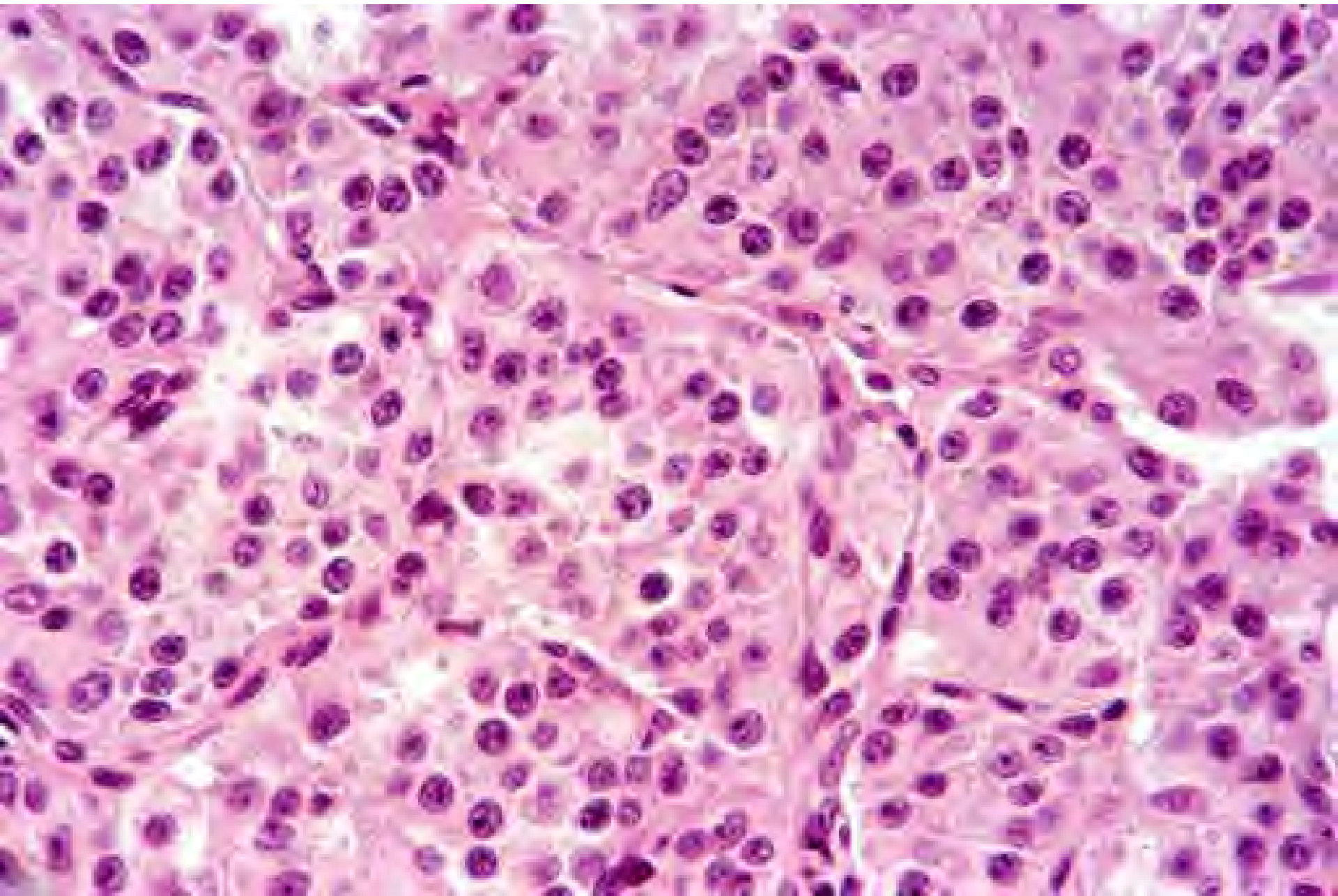




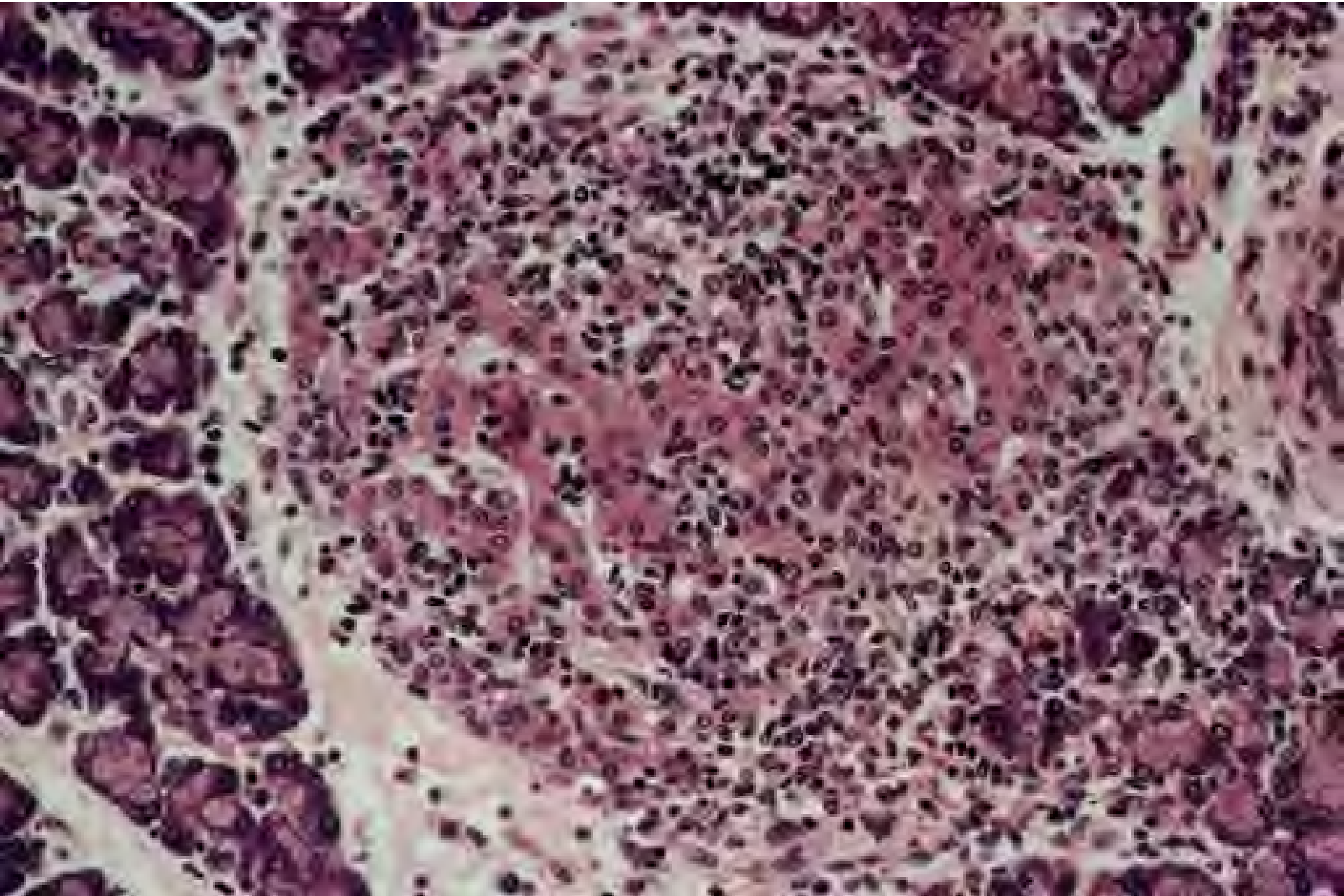


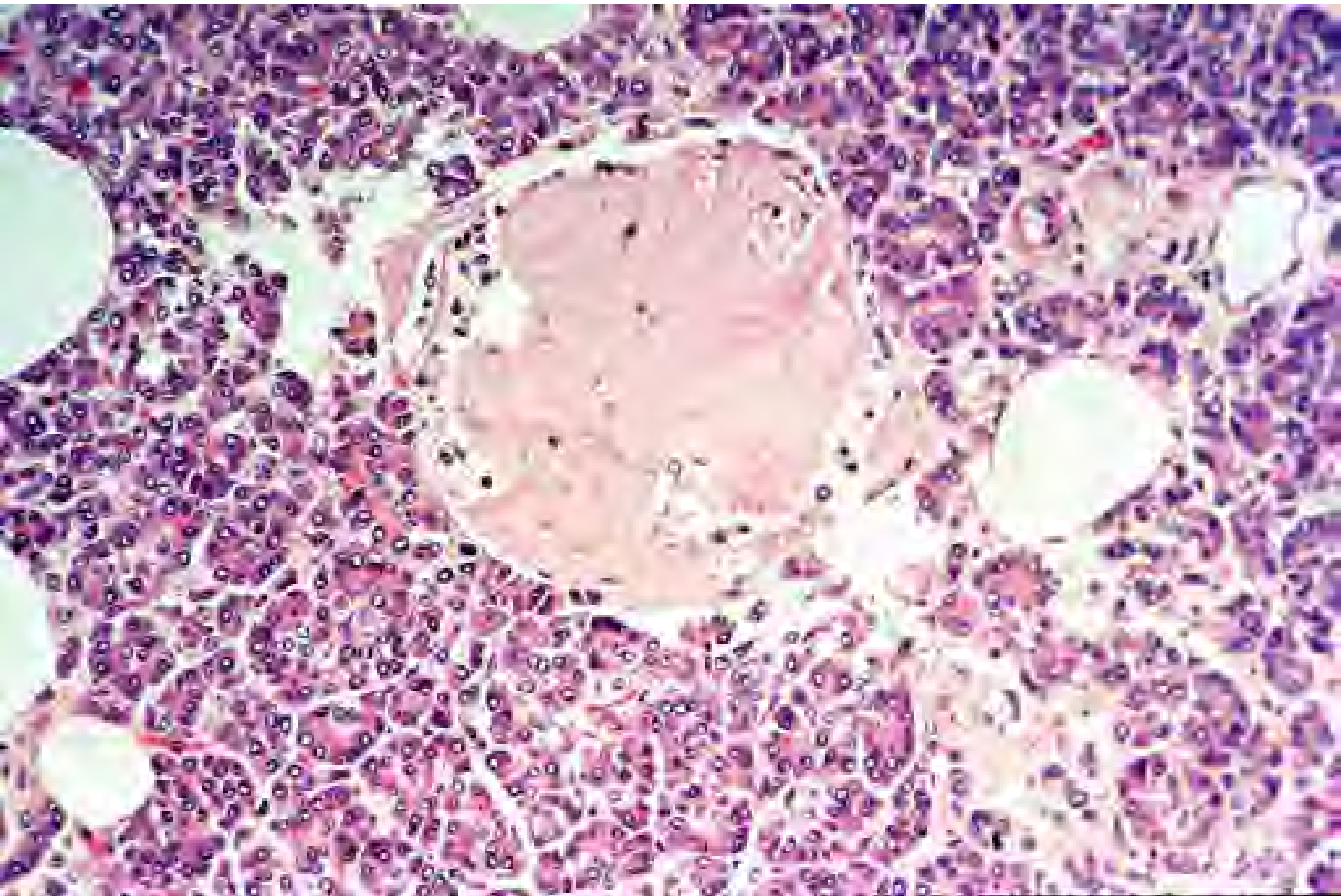




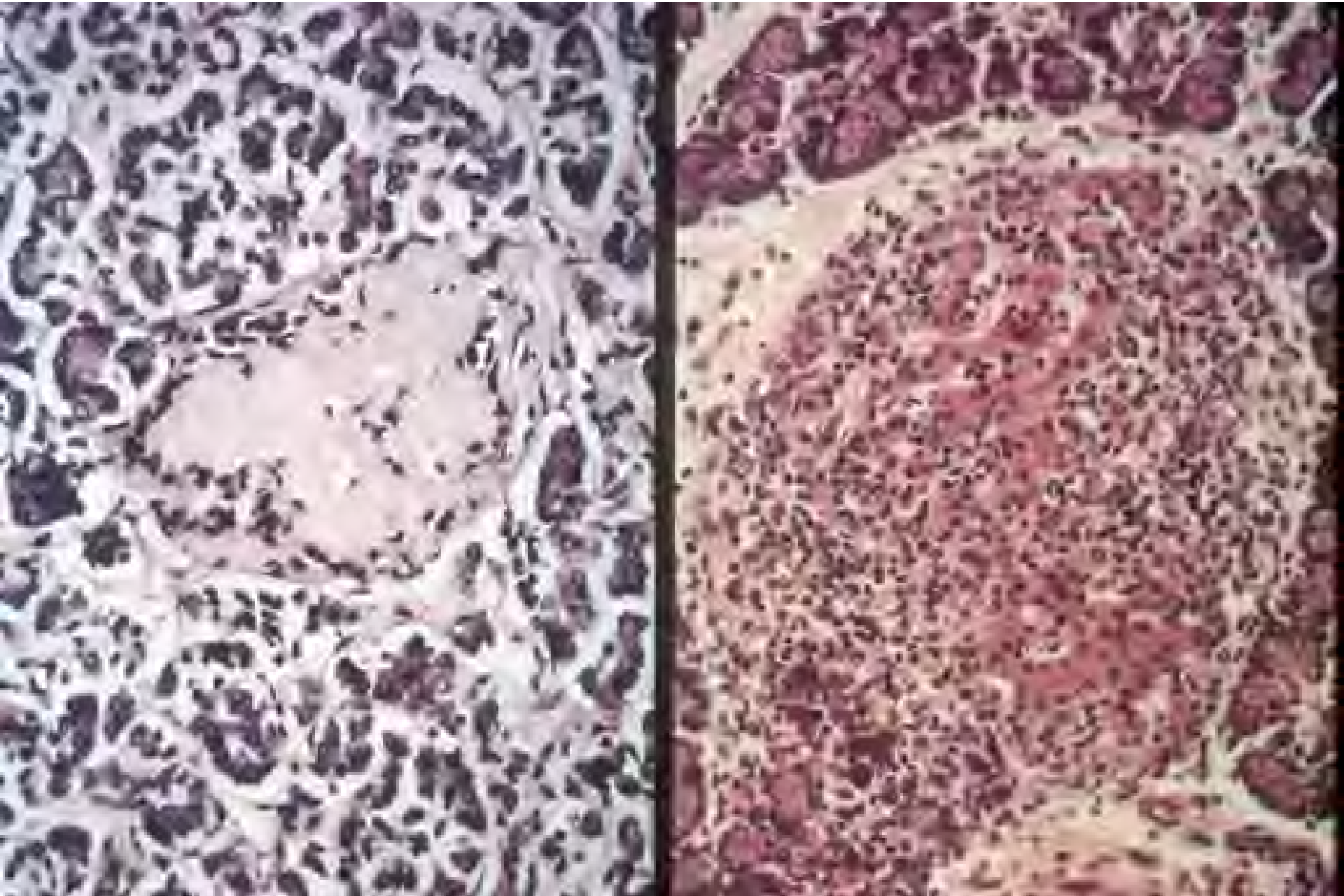


# Diabetes





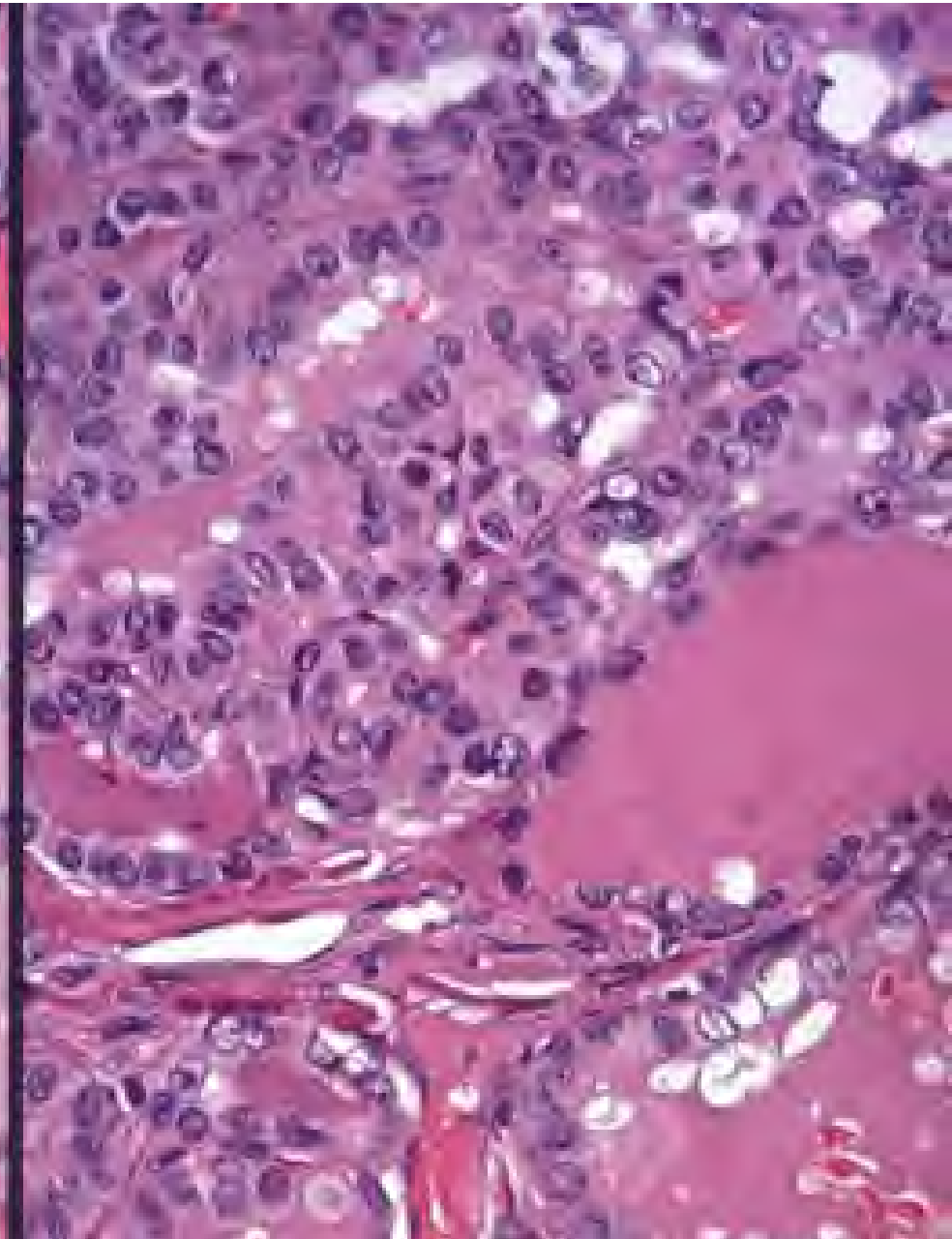
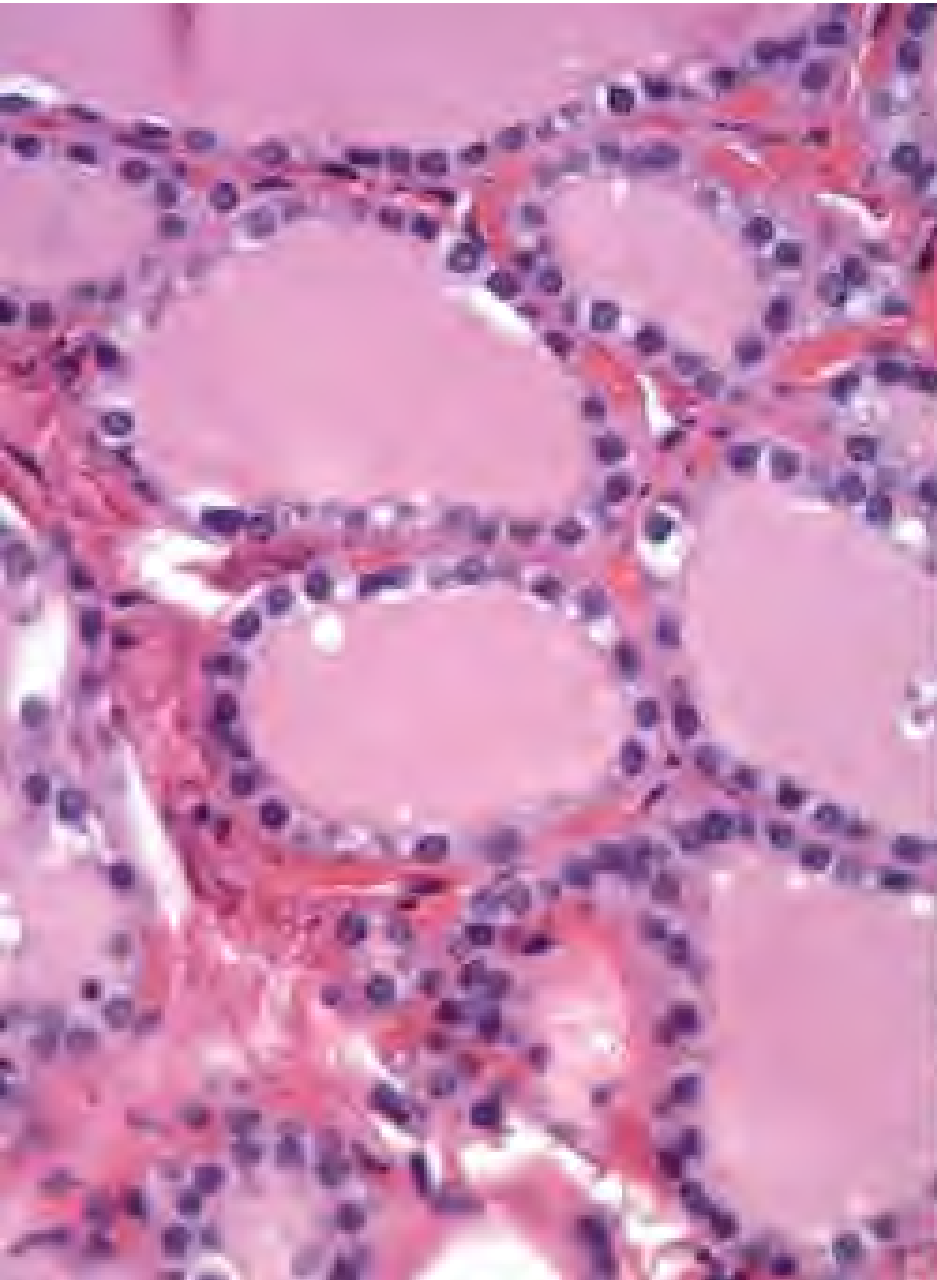


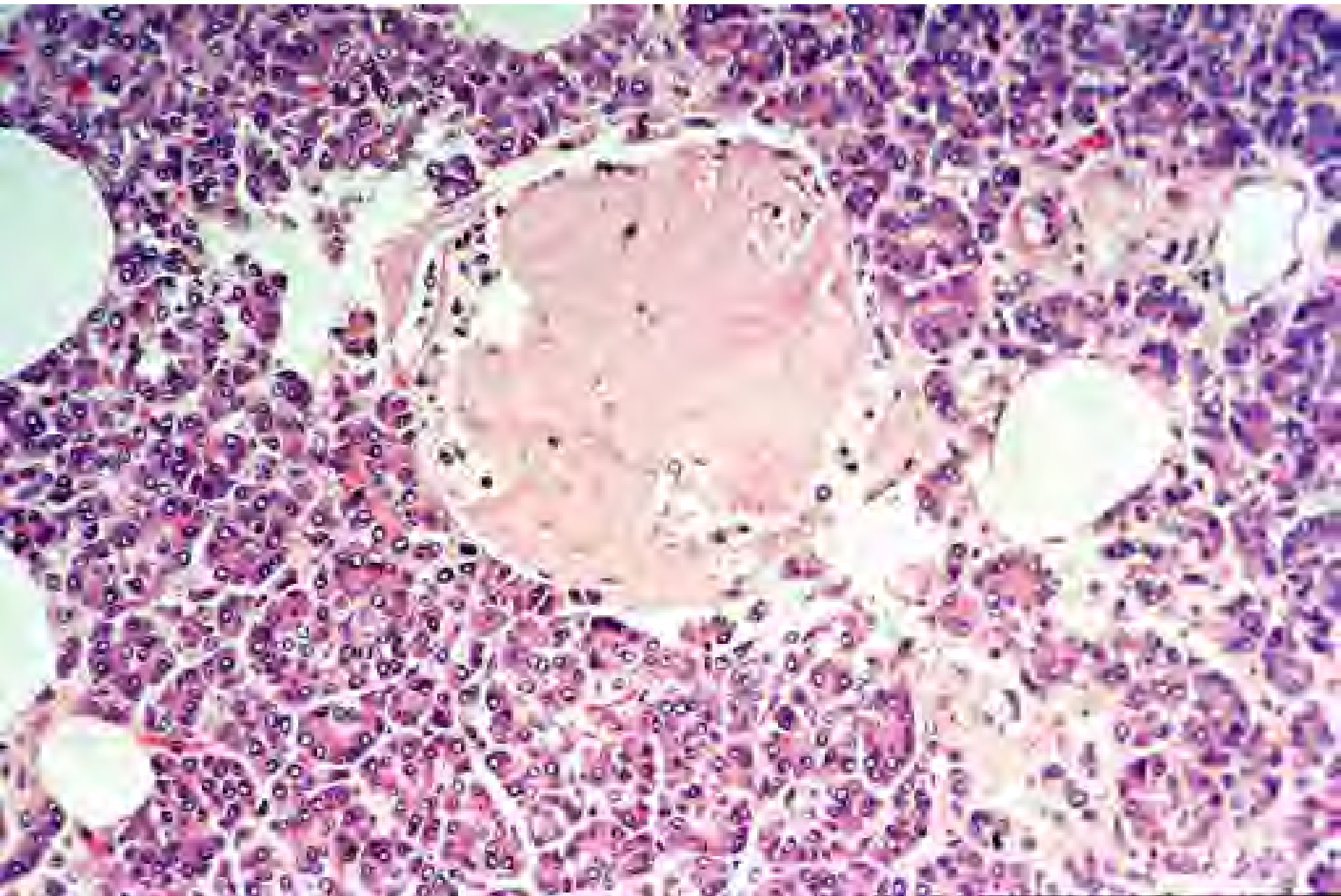


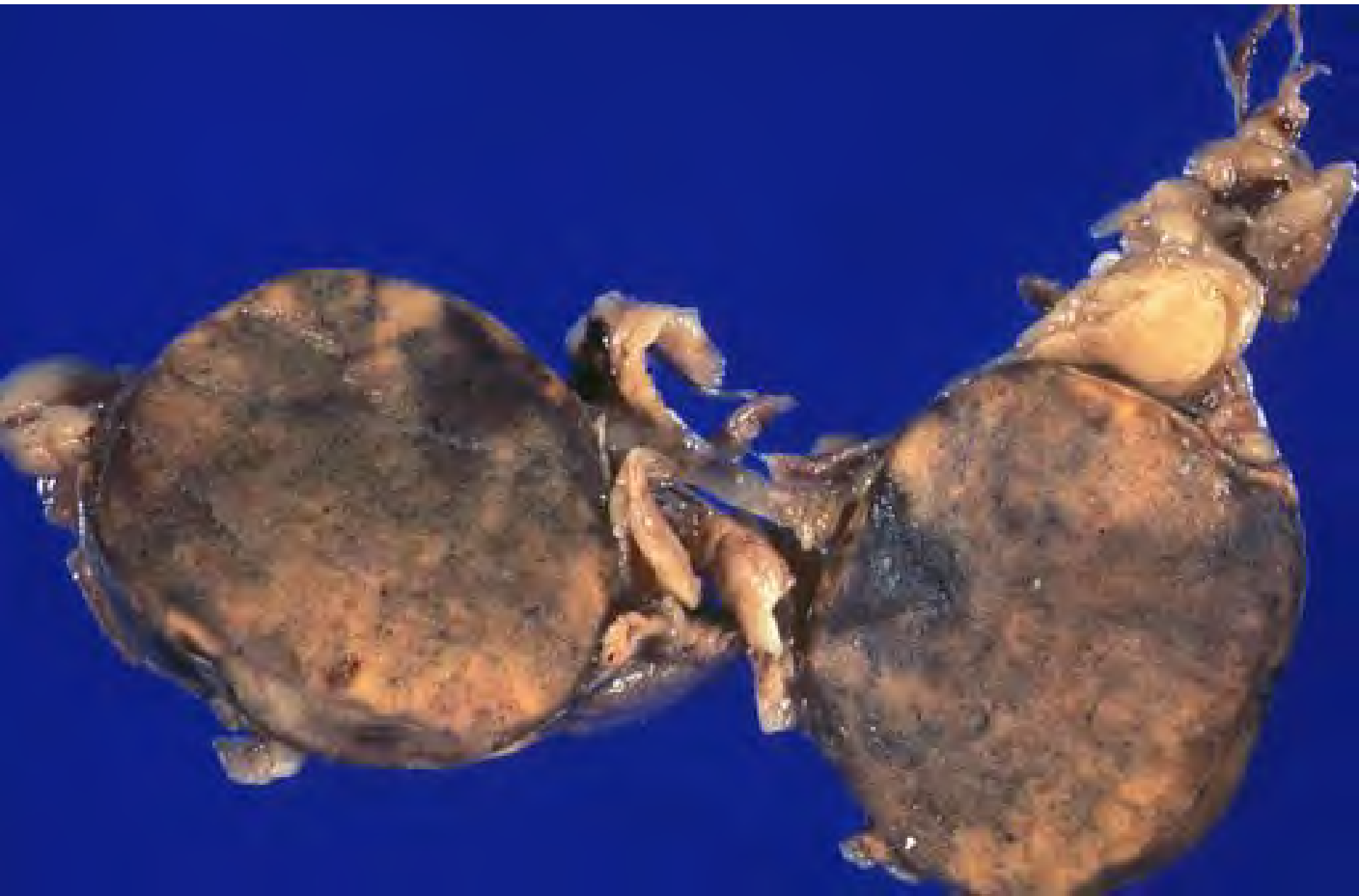
# Pathology Olympics!

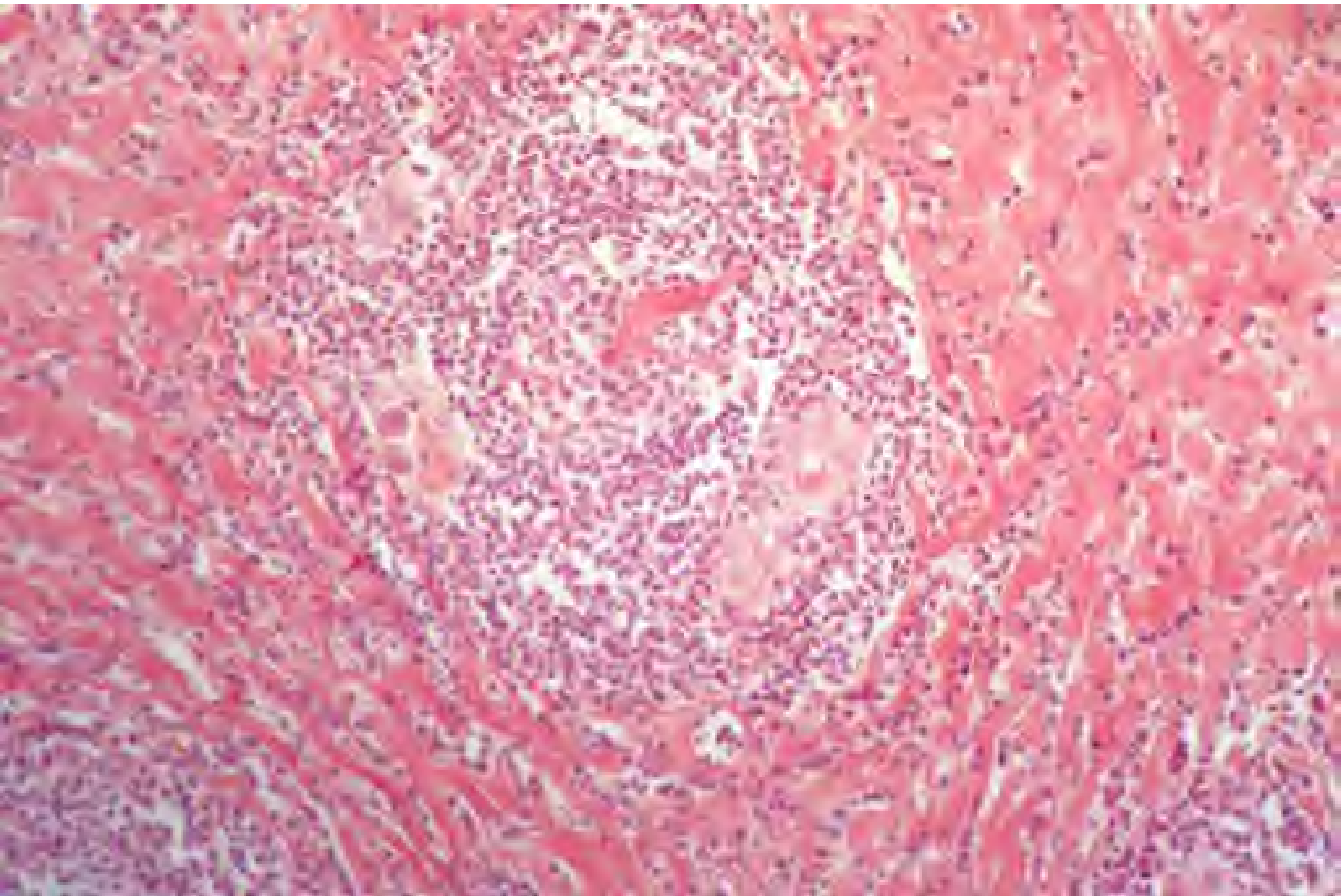


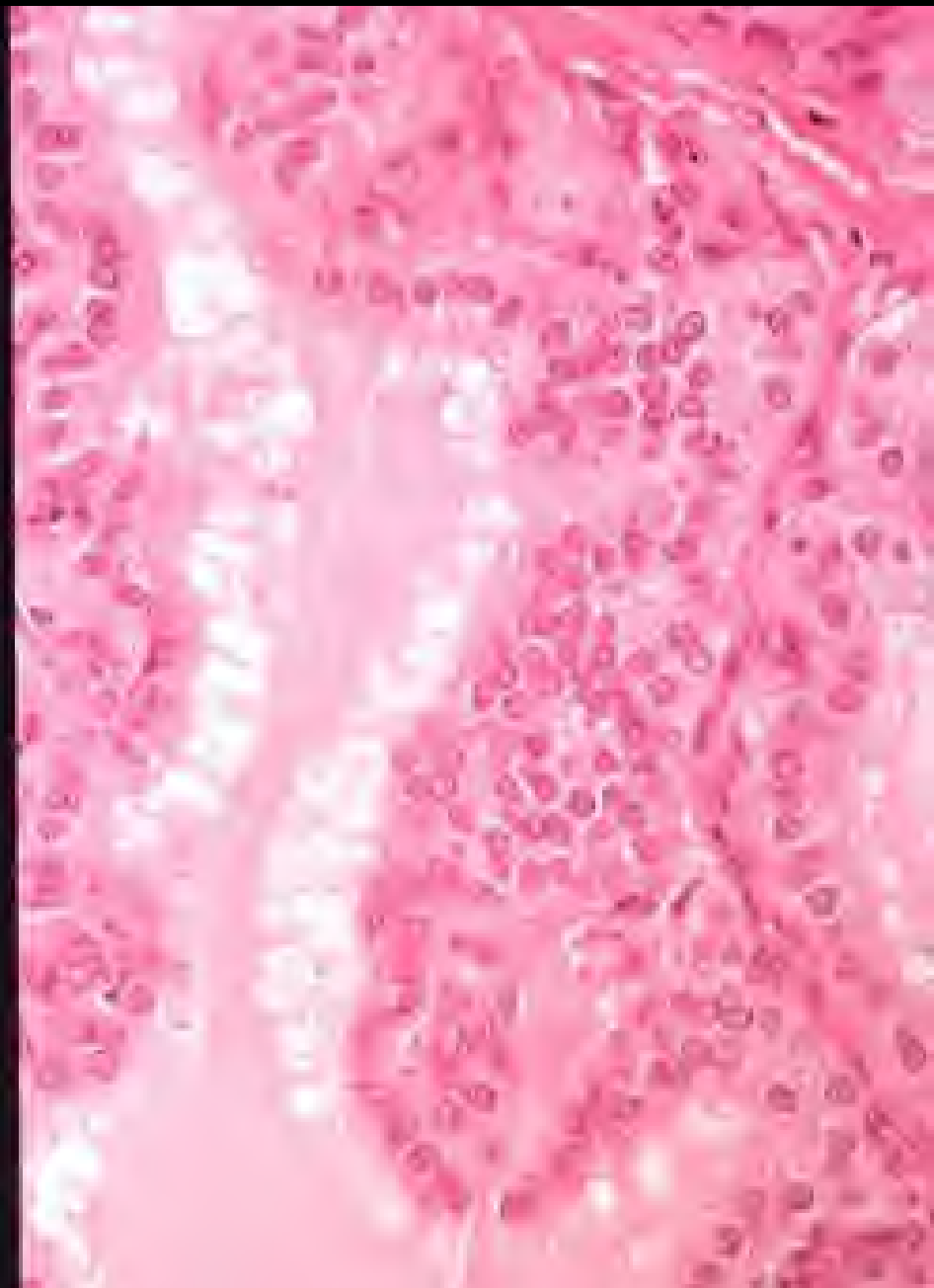
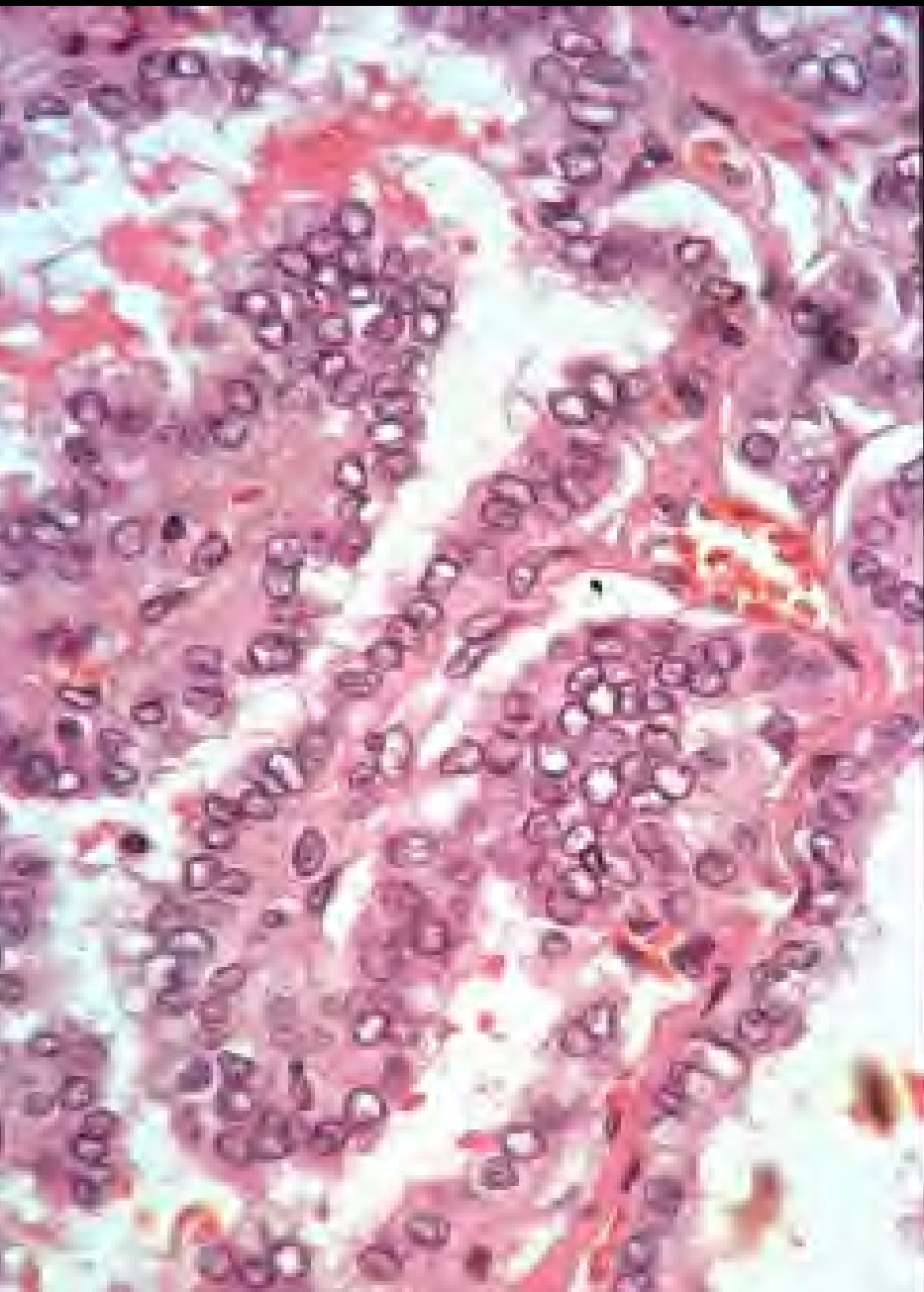
Following slides are intended for review

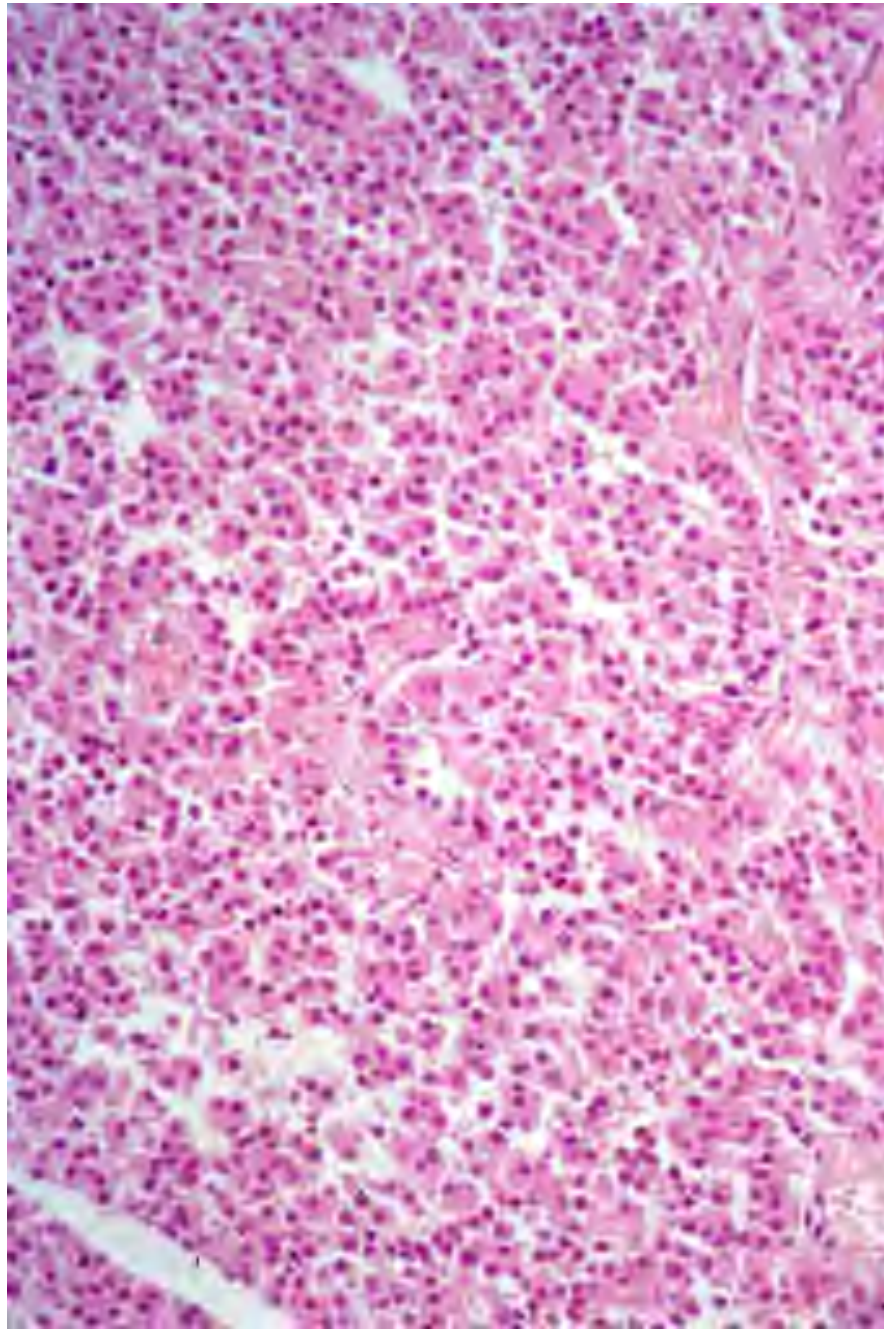
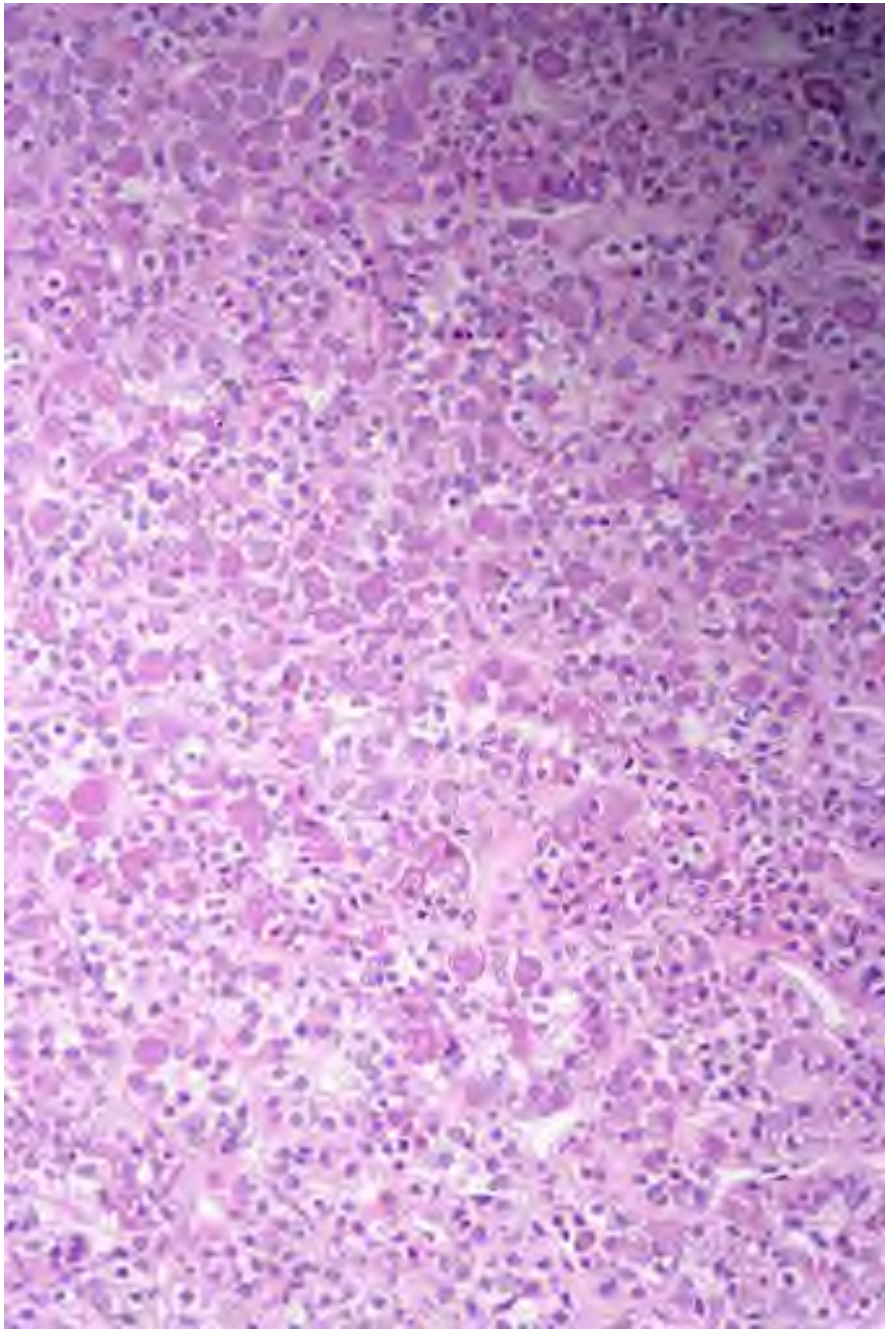
















# Additional Source Information

for more information see: <http://open.umich.edu/wiki/CitationPolicy>

- Slide 5: Regents of the University of Michigan
- Slide 6: Regents of the University of Michigan
- Slide 7: Department of Pathology, University of Michigan
- Slide 8: Regents of the University of Michigan
- Slide 9: Regents of the University of Michigan
- Slide 10: Regents of the University of Michigan
- Slide 11: Regents of the University of Michigan
- Slide 13: Source Undetermined
- Slide 14: Regents of the University of Michigan
- Slide 15: Regents of the University of Michigan
- Slide 16: Regents of the University of Michigan
- Slide 17: Source Undetermined (All Images)
- Slide 19: Department of Pathology, University of Michigan
- Slide 20: Regents of the University of Michigan
- Slide 21: Regents of the University of Michigan
- Slide 22: Regents of the University of Michigan
- Slide 23: Regents of the University of Michigan
- Slide 25: Regents of the University of Michigan
- Slide 26: Source Undetermined
- Slide 27: Regents of the University of Michigan
- Slide 28: Regents of the University of Michigan
- Slide 29: Regents of the University of Michigan
- Slide 31: Regents of the University of Michigan
- Slide 32: Source Undetermined
- Slide 33: Regents of the University of Michigan
- Slide 35: Regents of the University of Michigan
- Slide 36: Regents of the University of Michigan
- Slide 37: Source Undetermined
- Slide 38: Regents of the University of Michigan
- Slide 39: Regents of the University of Michigan
- Slide 40: Regents of the University of Michigan
- Slide 41: Regents of the University of Michigan